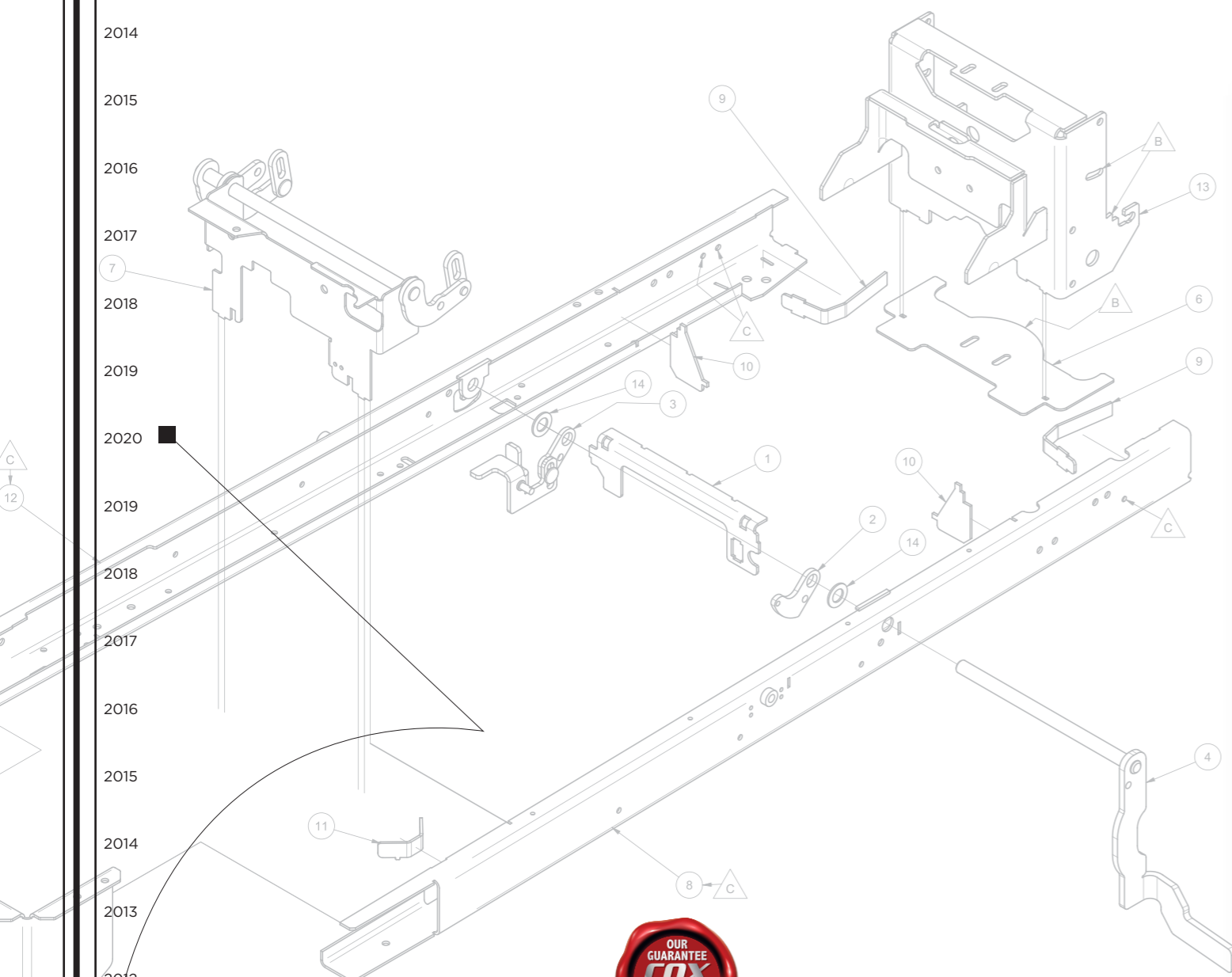


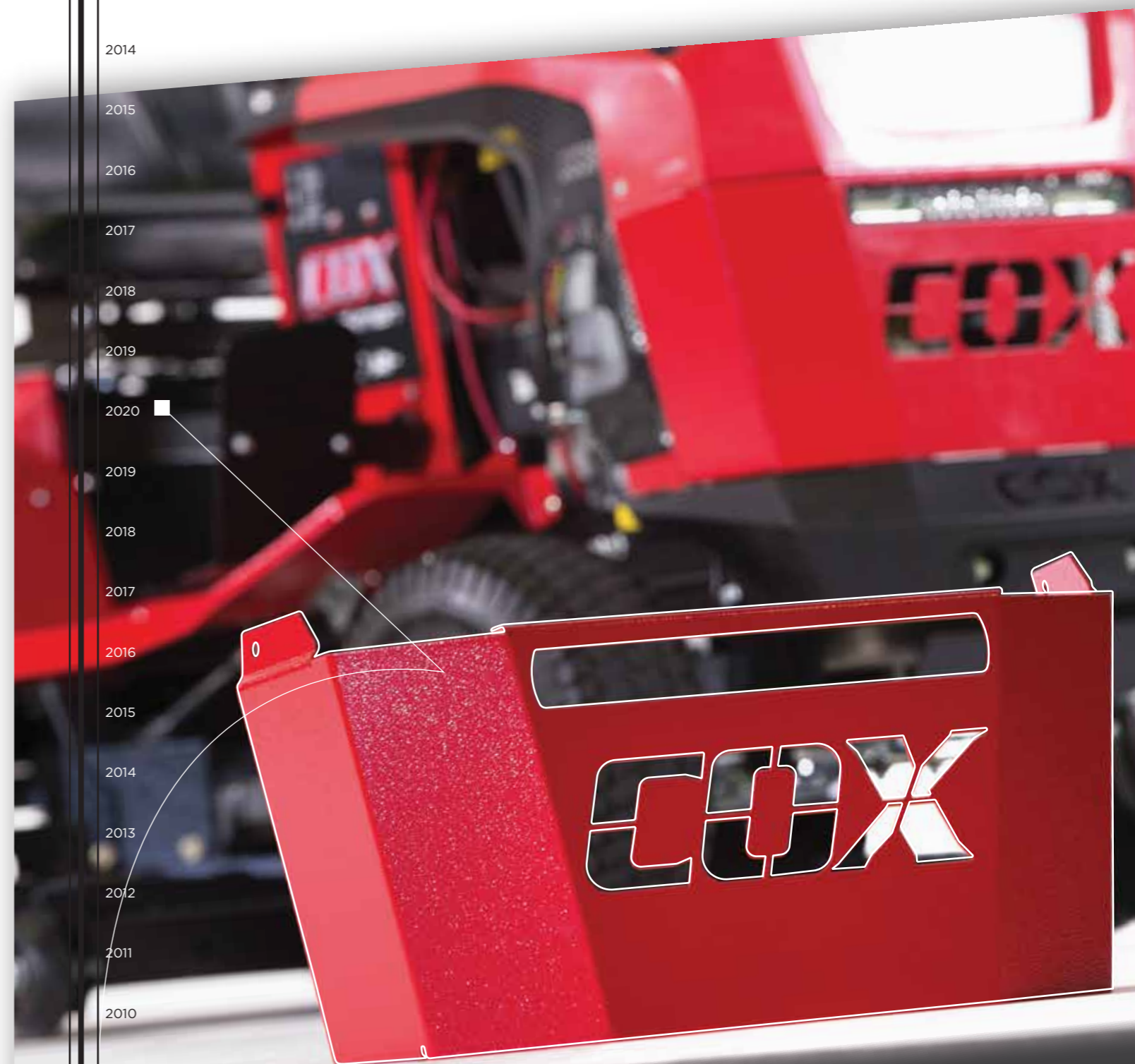
2009
2010
2011
2012
2013
2014
2015
2016
2017
2018
2019
2020
2019
2018
2017
2016
2015
2014
2013
2012
2011
2010
2009



COX Industries (Australia) Pty Ltd
70 Landseer St, Acacia Ridge, Queensland, Australia 4110
COXmowers.com.au sales@COXmowers.com.au PH: (07) 3323 2222

Specifications are current at time of publication and subject to continuous improvement without notice.

2009
2010
2011
2012
2013
2014
2015
2016
2017
2018
2019
2020
2019
2018
2017
2016
2015
2014
2013
2012
2011
2010
2009



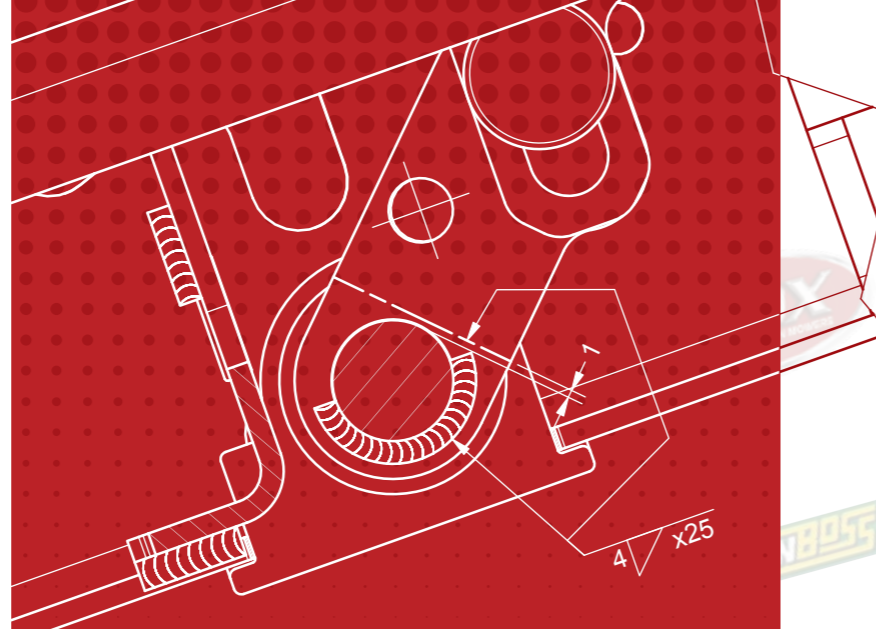
Mowing Australia's Grass for 70 Years

2020
2017
2014
2011
2008
2005
2002
1999
1996
1993
1990
1987
1984
1981
1978
1975
1972
1969
1966
1963
1960
1957
1954

Australian Engineered - Since 1954

When Owen Cox built his first MowMobile in 1954, we doubt even he knew the ongoing legacy he had created.

Nearly Seventy years later, COX Ride-on Mowers and Garden Equipment are regarded as the Australian benchmark for Practicality, Durability and Engineering – testimony to Owen's belief that Quality Components are paramount to Quality Equipment.



Our longevity is legendary.



MowMobile
1959-1968



5-25 MowMobile
1968-1974



9-28 Compact Tractor
1969-1976



Compact Tractor
1986-1990



Stockman
1993-2000



Supa-Nova
1990-1993



New Generation
1998-2004



Stockman Series 2
2002-2005



LawnBOSS
2004-2015



LawnBOSS
2015-2017



Stockman Series 3
2008-2014



Stockman 4500
2014-Current



So why invest in a COX?

Our Chassis are Engineered for Life

Whether you're mowing billard table flat lawns, rolling manicured slopes or the rockiest of paddocks, it is reassuring to know your COX has been engineered to handle the toughest of Buffalo, the hardest Kikuyu or our national perennial pest, wispy Onion grass.

Robot welded frame with oversized steel rails, quality components and premium ripple powder coating all combine to ensure chassis reliability that's now legendary.

Backed by a nationwide genuine parts and accessories Dealer network that will get you back mowing quickly, there is simply no other choice when it comes to Australian engineered, Australian owned, ride-on mowers.



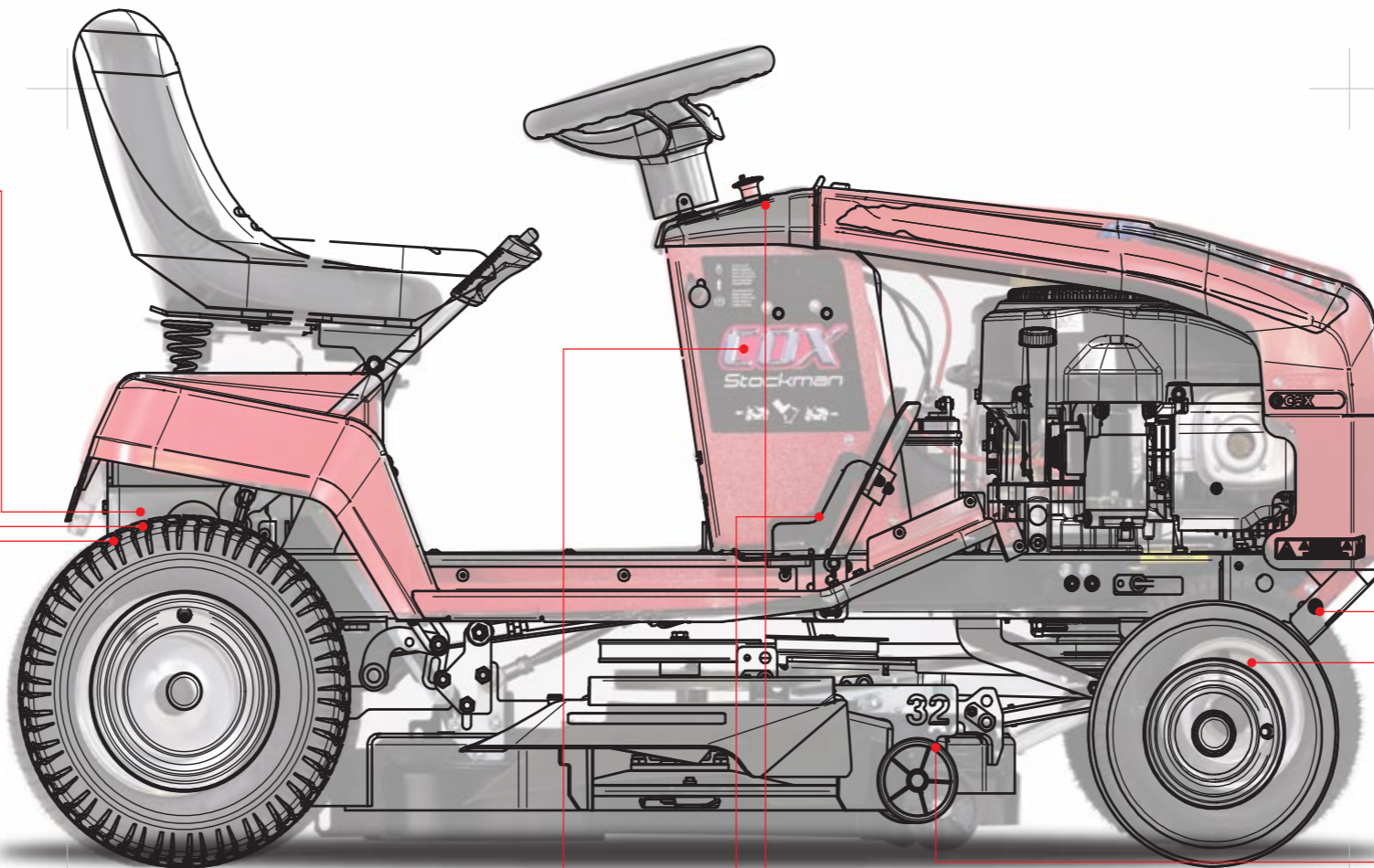
Quality Tuff Torq Transmission - infinite choice of speed and easier turns



Premium Ripple Power Coating for added durability



Multi-stage spring assisted deck height adjustment



Pivoting front axle beam reduces scalping over uneven ground



Premium sealed wheel bearings



Easy access Fuel Tank with visual gauge



Oversize Drive Pedal suits all workboots



Push Button Deck Cutting Engagement



B Section Belts fitted for longevity and inexpensive replacement

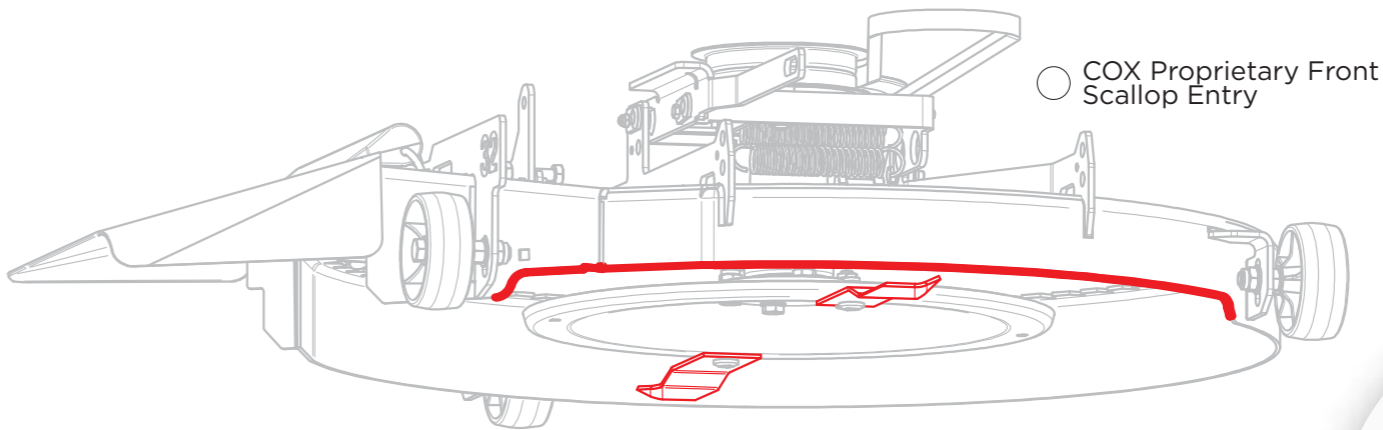
2009
2010
2011
2012
2013
2014
2015
2016
2017
2018
2019
2020
2019
2018
2017
2016
2015
2014
2013
2012
2011
2010
2009

So why invest in a COX?

Our Cutting Decks are Engineered for Life

Long and/or wet grass is tough work for any mower. Only COX engineer our cutting decks with a proprietary Front Scallop Entry to ensure grass is cut, rather than being pushed flat.

No other mower is Engineered like a COX - **Cuts First Pass.**



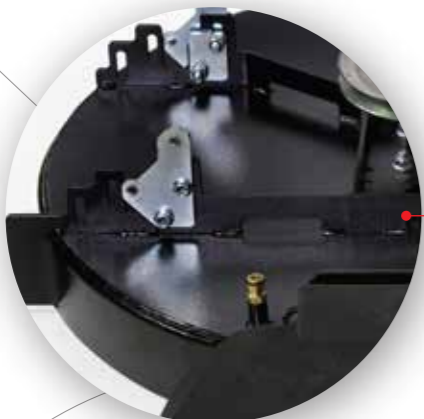
○ COX Proprietary Front Scallop Entry



○ Heavy Duty Cast Iron Spindle Housing



○ Impact Absorbing High Tensile Swing Back Blades



○ Robotically Welded, Full Perimeter Seam, Fabricated Steel Deck



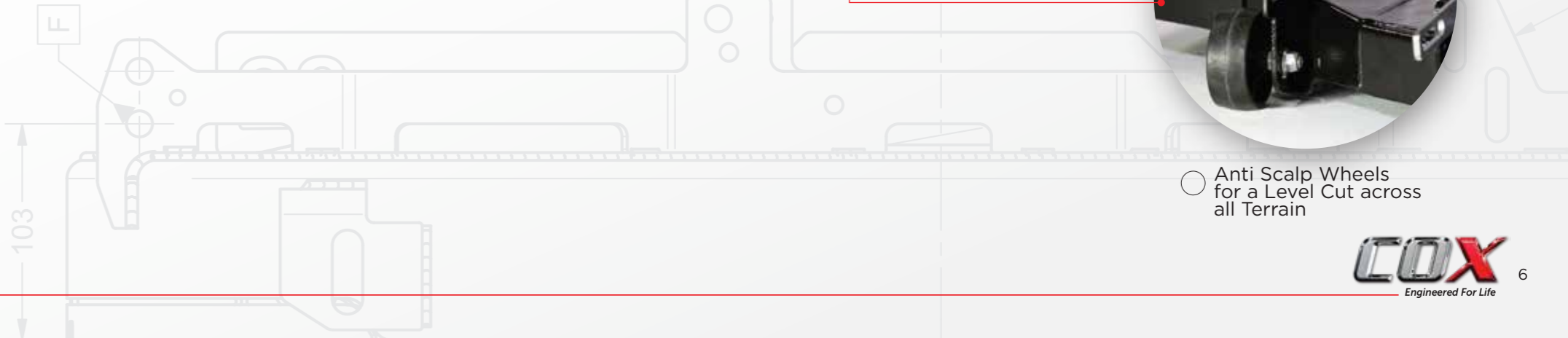
○ Pulleys & Spindles all have Premium Sealed Bearings



○ Super Wide Discharge Chute



○ Anti Scalp Wheels for a Level Cut across all Terrain



2009
2010
2011
2012
2013
2014
2015
2016
2017
2018
2019
2020
2019
2018
2017
2016
2015
2014
2013
2012
2011
2010
2009



○ Twin Drink Holders



○ Push Button Cutting Engagement



○ Easy Engage Deck Height Adjustment



Our new 2020 models continue this proud tradition - comfortable, affordable and user-friendly.

Models	Stockman - CTH15B32/CTH15C32
Engine	B&S Intek 15.5HP/COX 15HP OHV
Cylinders	Single
Displacement	500cc/432cc
Oil Capacity	1.4LT
Engine Warranty	2 Yrs B&S Covered/3 Yrs COX Conditional
Drive	
Drive Type	Hydrostatic with Diff
Drive Model	Tuff Torq K46
Drive Warranty	2 Yrs Conditional
Ground Speed	FWD 0-9KPH/REV 0-3KPH
Cutting System	
Cutter Deck Width	32"(805mm)
Blade Engagement	Ogura Electromagnetic Clutch
Cutter Belt Type	Premium B-Section
Height Range	15mm-85mm
Blade Type	Heavy Duty Swing Back
Chassis	
Tyres	13x5.00-6 (F) , 16x6.5-8 (R)
Seat	Comfort Seat with Springs
Seat Adjustment	Manual Adjustment
Hour Meter	Standard
Construction	Fabricated Steel
Steering Wheel	Premium Steering Wheel
Dimensions	
Length	1700mm
Width	805mm
Weight	189Kg
Warranty	5 Yrs Conditional



Specifications are a guide only and subject to change without notice for all models.

○ Comfort Seat with Springs



○ 32" Fully Fabricated Deck



○ Pivoting Front Axle Tie Rod Steering



2009
2010
2011
2012
2013
2014
2015
2016
2017
2018
2019
2020

Powered by a Briggs & Stratton 17.5 hp Single or Limited Edition 16 hp V-Twin engine, our Stockman Plus is the ideal choice for a heavy-duty mower on mid-sized acreages.

Affordable, Economical and Reliable, our COX Stockman Plus has all the answers.

Models:	Stockman Plus - CTH17B32/CTH17B40
Engine	B&S 17.5HP Intek
Cylinders	Single
Displacement	500cc
Oil Capacity	1.4LT
Engine Warranty	2 Yrs B&S Covered
Drive	
Drive Type	Hydrostatic with Diff
Drive Model	Tuff Torq K46
Drive Warranty	2 Yrs Conditional
Ground Speed	FWD 0-9KPH/REV 0-3KPH
Cutting System	
Cutter Deck Width	32"(805mm) / 40"(1016mm)
Blade Engagement	Ogura Electromagnetic Clutch
Cutter Belt Type	Premium B-Section
Height Range	15mm-85mm
Blade Type	Heavy Duty Swing Back
Chassis	
Tyres	15x6.00-6 (F) , 18x7.5-8 (R)
Head Light	Twin LED
Seat	Premium Highback Seat with Springs
Seat Adjustment	Fingertip Adjustment
Hour Meter	Standard
Construction	Fabricated Steel
Steering wheel	Premium Steering Wheel
Dimensions	
Length	1805mm
Width	805mm/1250mm
Weight	189Kg/206Kg
Warranty	5 Yrs Conditional



Specifications are a guide only and subject to change without notice for all models.



○ Larger Wheel Package



○ Twin Spindle 40" Deck Available



○ Pedal Controlled Tuff Torque Transmission



○ Twin LED Headlight

2009
2010
2011
2012
2013
2014
2015
2016
2017
2018
2019
2020
2019
2018
2017
2016
2015
2014
2013
2012
2011
2010
2009



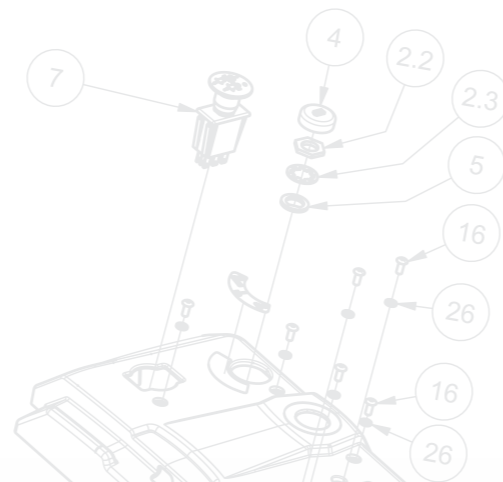
○ Convenient Arm Rests for Extra Comfort



○ Turfmaster Wide Tyre Package



○ Tuff Torq Auto Locking Differential



○ Option of 35" single or 40" twin spindle, fully fabricated decks



○ Stylish Side Bonnet Mesh



○ Practical Front Bumper

Our COX Stockman Pro is designed for landowners who need a powerful machine for large areas or difficult terrain. Slash fire breaks, tackle the back paddock or mow your lawn - this Aussie Legend will handle it all with ease.

COX Stockman Pro... the benchmark that all others are judged by.

Models:	Stockman Pro - CTH20B35/CTH20B40
Engine	B&S 20HP Intek V-Twin
Cylinders	V-Twin
Displacement	656cc
Oil Capacity	2.0LT
Engine Warranty	2 Yrs B&S Covered
Drive	
Drive Type	Hydrostatic with Auto Locking Diff
Drive Model	Tuff Torq K46EH (Auto Lock)
Drive Warranty	2 Yrs Conditional
Ground Speed	FWD 0-9KPH/REV 0-3KPH
Cutting System	
Cutter Deck Width	35" (890mm) / 40" (1016mm)
Blade Engagement	Ogura Electromagnetic Clutch
Cutter Belt Type	Premium B-Section
Height Range	15mm-85mm
Blade Type	Heavy Duty Swing Back
Chassis	
Tyres	15x6.00-6 (F) , 18x9.5-8 (R)
Head Light	Standard
Seat	Premium Highback Seat
Seat Adjustment	Fingertip Adjustment
Hour Meter	Standard
Construction	Fabricated Steel
Steering Wheel	Premium Steering Wheel
Dimensions	
Length	1720mm
Width	885mm / 1250mm
Weight	230Kg / 238Kg
Warranty	5 Yrs Conditional



Specifications are a guide only and subject to change without notice for all models.

2009
2010
2011
2012
2013
2014
2015
2016
2017
2018
2019
2020
2019
2018
2017
2016
2015
2014
2013
2012
2011
2010
2009



Our Stockman ZTR will easily fit through most backyard entrances, as it measures only 940mm wide (35" Model), the narrowest ZTR's currently on the market!

Finally a Zero Turn mower capable of both slashing heavy grass and maintaining your lawns.

The Stockman ZTR has the same cutting performance of our legendary COX ride-on mower range with the added convenience of lever controlled steering essentially means turning on the spot.

Both Stockman ZTR Models are fitted with a COX 17HP V-Twin Engine with either 35" or 40" cutter deck.

Models:	Stockman ZTR - CZ17C35/CZ17C40
Engine	COX 17HP V-Twin
Cylinders	V-Twin
Displacement	586cc
Oil Capacity	2.0LT
Engine Warranty	COX 3 Yrs Conditional
Drive	
Drive Type	Hydro-Gear
Ground Speed	0-12KPH
Drive Warranty	2 Yrs Conditional
Cutting System	
Cutter Deck Width	35" (890mm)/40" (1016mm)
Blade Engagement	Electromagnetic Clutch
Cutter Belt Type	Premium B-Section
Height Range	15mm-85mm
Blade Type	Heavy Duty Swing Back
Chassis	
Tyres	11x400x5 (F) , 18x6.50-8 (R)
Seat	Preimum Highback Seat
Seat Adjustment	Fingertip Adjustment
Hour Meter	Standard
Construction	Fabricated Steel
Fuel Capacity	11LT Single Tank
Dimensions	
Length	1900mm
Width	940mm/1250mm
Weight	277Kg/285Kg
Warranty	5 Yrs Conditional



Specifications are a guide only and subject to change without notice for all models.



Hand controlled twin levers allow the operator to change direction for greater operator control.

Multistage fabricated height adjustment with foot assist for quick lift over obstacles and low-effort height adjustment.

11 Litre fuel tank for up to 4 Hours of continuous mowing.

Full-length robotically welded frame design has high-strength steel rails for added strength and long life.

Unique pivoting front axle gives increased traction and stability.

2009
2010
2011
2012
2013
2014
2015
2016
2017
2018
2019
2020
2019
2018
2017
2016
2015
2014
2013
2012
2011
2010
2009

COX

SuperCruiser ZTR

Rear Guard



Handy Toolbox



The COX SuperCruiser zero turn mower will easily turn on its own length.

Just flick your control levers left or right and you'll swing around trees and garden beds in just one pass, with minimum effort.

When you have finished mowing, just snap on a standard hose fitting and the underside of your deck will be flushed clear of accumulated grass clippings.



Powerful COX V-Twin Engine



Twin Hydro-Gear Auto Transmission



8mm Side Reinforced Deck



Models:	SuperCruiser - CZ24P42/CZ24P48
Engine	COX 24HP V-Twin
Cylinders	V-Twin
Displacement	764cc
Oil Capacity	2.0LT
Engine Warranty	COX 3 Yrs Conditional
Drive	
Drive Type	Hydrogear Auto Transmission
Ground Speed	0-12KPH
Drive Warranty	2 Yrs Conditional
Cutting System	
Cutter Deck Width	42"/1055mm or 48"/1220mm
Blade Engagement	Ogura Electromagnetic Clutch
Cutter Belt Type	Premium B-Section
Height Range	15mm-85mm
Blade Type	Heavy Duty Swing Back
Chassis	
Tyres	11x400x5 (F), 18x9.50-8 (R)
Seat	Premium Highback Seat with Armrest
Seat Adjustment	Fingertip Adjustment
Hour Meter	Standard
Construction	Fabricated Steel
Fuel Capacity	22 LT Dual Tank
Dimensions	
Length	1900mm
Width	1380mm/1510mm
Weight	312Kg/357Kg
Warranty	5 Yrs Conditional



Specifications are a guide only and subject to change without notice for all models.

2009
2010
2011
2012
2013
2014
2015
2016
2017
2018
2019
2020

Piecemaker™



Recycle, Reduce, Revegetate

Piecemaker has set the benchmark for garden waste recycling for nearly 20 years.

Turn garden waste into valuable recycled mulch.

- All metal construction - built to last
- Compact design
- Powerful performance
- Patented Anti-Clog system
- No-Mess™ catching system for minimal clean-up
- Suitable for fibrous material including palm fronds



Wide hopper for leaves and branches up to 40mm



Range of Briggs & Stratton Engine options



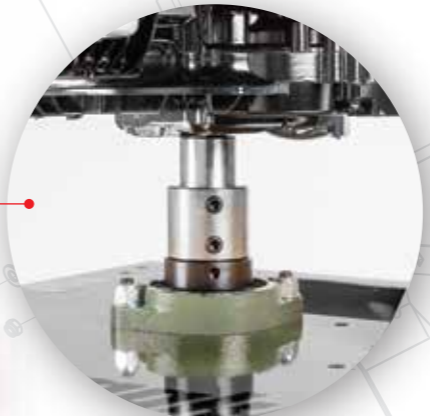
Long-life Double-edge Carbon Steel blades. Can be reversed and resharpened



No-Mess™ High-speed discharge and Catcher system



Quick Release Clamshell design - cleaning and blade rotation are quick and easy



Crankshaft Protection - 35mm 1350 kg load-rated bearing unit

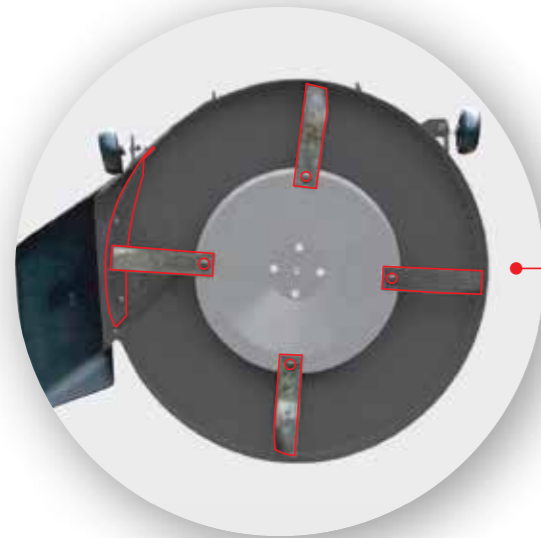


Piecemaker range has three petrol engine options all using quality Briggs & Stratton engines or our Fully Electric 240 volt unit.

Piecemaker Model	PM725	PM850	PM750	PM240
Engine Type	B&S 725 Series	B&S 850 Series	B&S 750is Series	Samsung 2400w
Engine Configuration	4-stroke, air-cooled, OHV	4-stroke, air-cooled, OHV	4-stroke, air-cooled, OHV	n/a
Engine Displacement (cc)	150	190	150	240V/9 AMP
Cylinder	Cast Iron Sleeve	Cast Iron Sleeve	Cast Iron Sleeve	n/a
Fuel Tank Capacity (L)	1.1	1.1	1.1	n/a
Oil Capacity (L)	0.7	0.7	0.7	n/a
Starter Type	Pull Start	Pull Start	Electric Start	Electric Motor
Limited Warranty	2 Yrs	2 Yrs	2 Yrs	2 Yrs

Specifications are a guide only and subject to change without notice for all models.

Stockman Accessories



Mulching Kit



Armrest Kit*



Wide Wheel Package



Engine Hour Meter



Rear 127mm (5") Anti-Scalping
Wheels for 890mm (35") Deck



Oil Drain Valve



All purpose MowPak



Side Catcher



Dual Fuel
Tank System**



Tow Hitch

Industry Leading Five Year Warranty.



We are so confident of the Design, Engineering, Workmanship and Materials that go into every COX, that we offer an industry leading five year warranty*. Its that simple!



COX

Engineered For Life

*Warranty conditional on the unit being serviced annually by an authorised COX Dealer.

COX
Engineered For Life