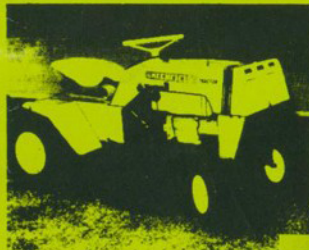


# GREENFIELD

## FARM and GARDEN TRACTORS

### SPARE PARTS and INSTRUCTIONS



MODEL	DESCRIPTION
10 or 11 VE	10 HP 251707 and 11 HP 252707 Briggs & Stratton vertical crankshaft, syncro-balanced, 4 stroke engine with electric start.
10 or 11 VR	10 HP 251702 and 11 HP 252702 Briggs & Stratton vertical crankshaft, syncro-balanced, 4 stroke engine recoil start.



MODEL	DESCRIPTION
8 VR or 8 VE	8HP 191702 Briggs & Stratton vertical crankshaft, syncro-balanced, 4 stroke engine recoil start or electric start.



MODEL	DESCRIPTION
5 VE	5 HP 130907 Briggs & Stratton vertical crankshaft, 4 stroke engine electric start.
5 VR	5 HP 130902 Briggs & Stratton vertical crankshaft, 4 stroke engine recoil start.

# GREENFIELD TRACTOR MOWER

MAY 1980 EDITION

11 H.P., 10 H.P., 8 H.P., 5 H.P. 4 CYCLE **VERTICAL** CRANK SHAFT BRIGGS & STRATTON ENGINE.

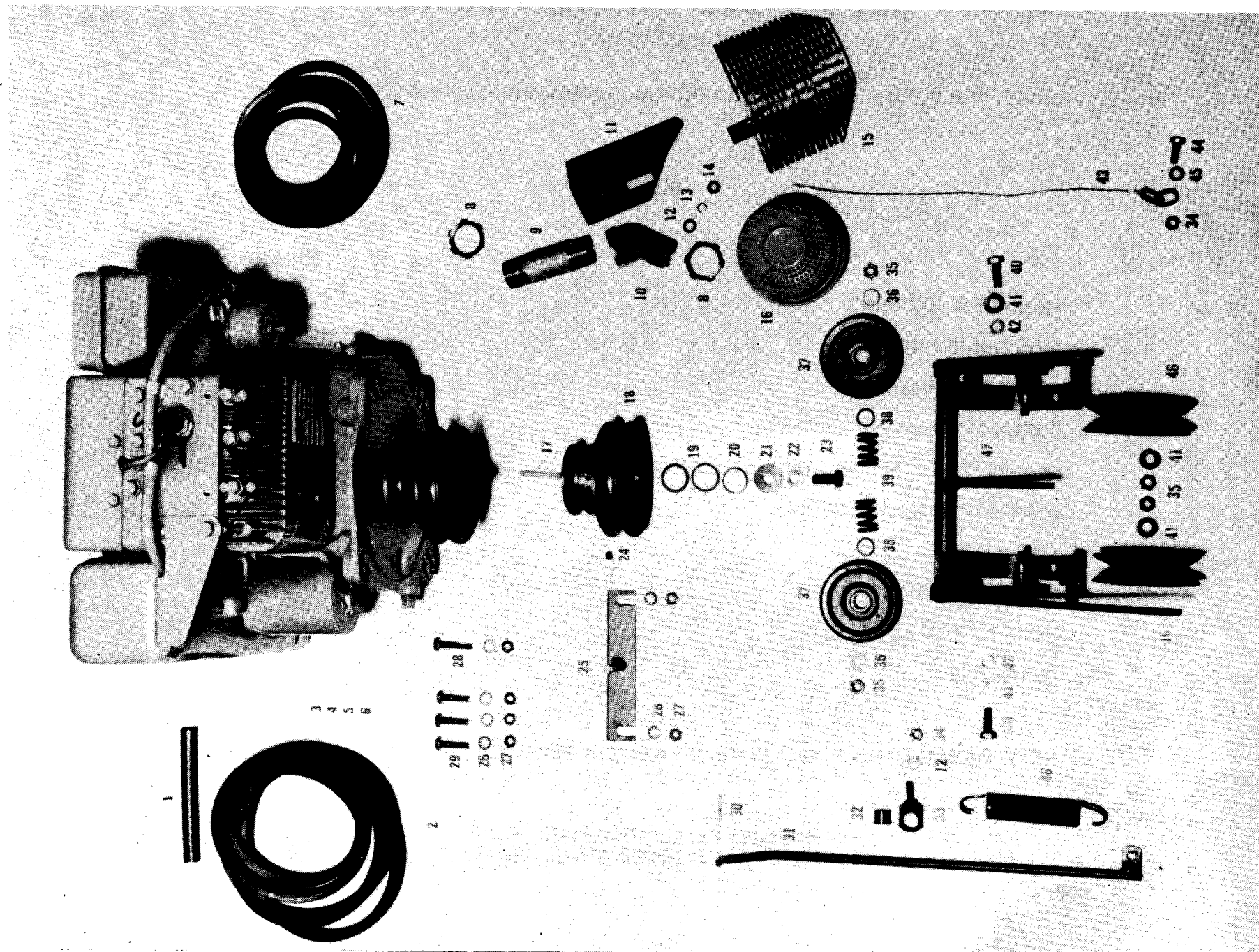
## INDEX

	Page No.
ENGINE & BLADE DRIVE .....	3
MAIN FRAME ASSEMBLY .....	5
FRONT & REAR ASSEMBLY .....	7
CUTTING ATTACHMENT ASSEMBLY .....	9
COVERS, SEAT, STEERING WHEEL & ELECTRICAL ASSEMBLY .....	11
REAR DRIVE CLUTCH ASSEMBLY .....	13
AMENDMENTS .....	14
OPERATING INSTRUCTIONS .....	18
HINTS TO HELP YOU .....	19
GUARANTEE .....	20

**NOTE:** FROM NOVEMBER, 1977 10 H.P. B & S ENGINE REPLACED BY 11 H.P. B & S ENGINE.

MODEL 11 V.E. ELECTRIC START 252707  
MODEL 11 V.R. RECOIL START 252702

# ILLUSTRATION 1



# ILLUSTRATION 1.

## ENGINE AND BLADE DRIVE

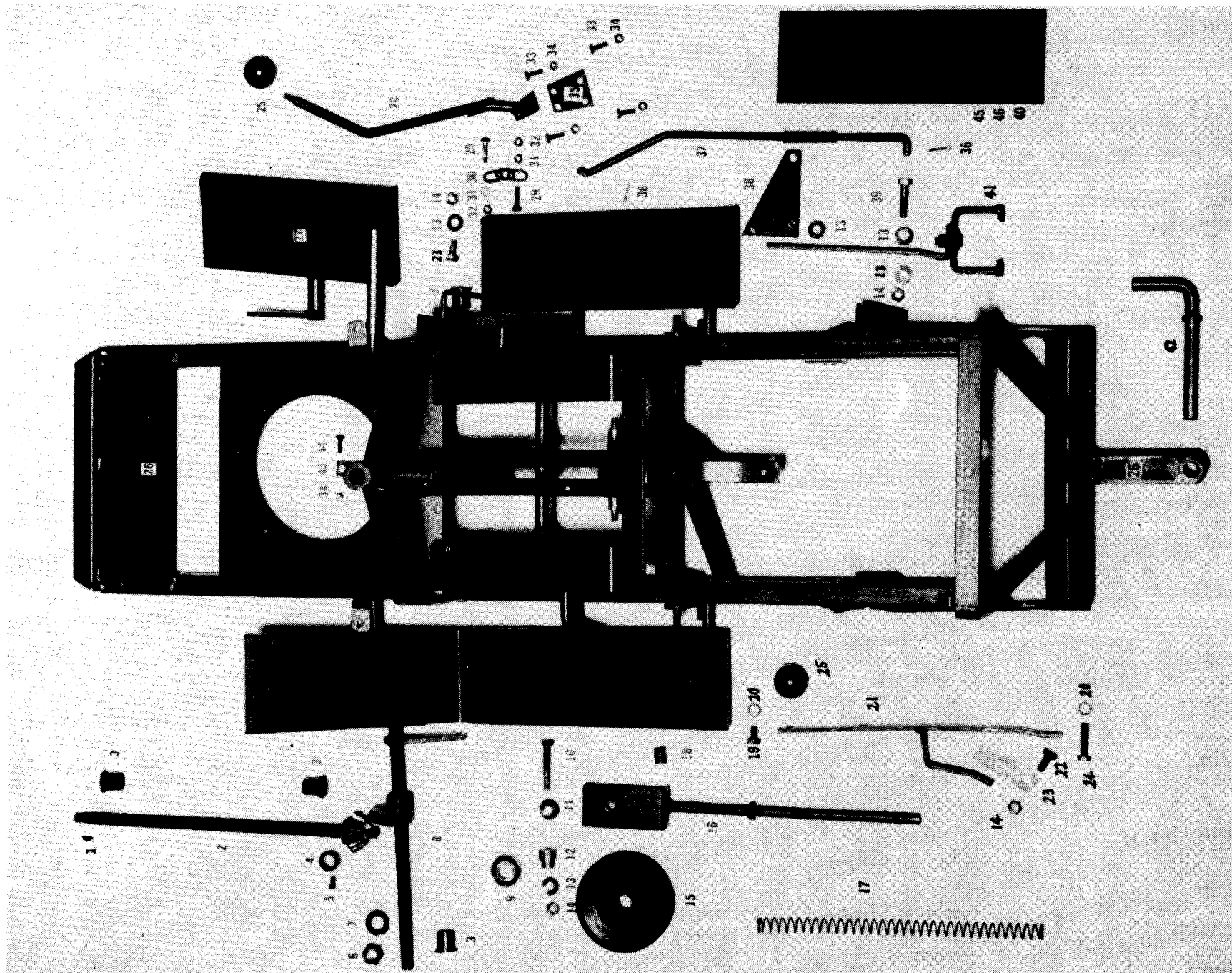
INDEX	PART No.	MODEL	QTY	DESCRIPTION
1	GT 1248	11—10—8	1	STARTER CORD TUBE
1	GT 1291	5	1	STARTER CORD TUBE
2	*GT 376	ALL	1	CUTTER DRIVE BELT <b>Ref. Note</b>
3	GT 1339	10 VE	1	10 HP B/S ELEC. START 251707
3	GT 1339	11 VE	1	11 HP B/S ELEC. START 252707
4	GT 1304	10 VR	1	10 HP B/S RECOIL START 251702
4	GT 1304	11 VR	1	11 HP B/S RECOIL START 252702
5	GT 797	8 VR	1	8 HP B/S RECOIL START 191702
6	GT 1343	5 VE	1	5 HP B/S ELEC. START 130907
6	GT 798	5 VR	1	5 HP B/S RECOIL START 130902
7	*GT 371	ALL	1	WHEEL DRIVE BELT <b>Ref. Note</b>
8	BS 91310	11—10	2	LOCK RING <b>B/S PART</b>
9	GT 1288	11—10	1	EXHAUST PIPE
10	GT 1293	11—10	1	EXHAUST ELBOW
11	GT 1329	11—10	1	PLATE
12	GT 1035	11—10	1	WASHER
13	GT 1249	11—10	1	SPRING WASHER
14	GT 73	11—10	1	NUT
15	GT 1328	11—10	1	MUFFLER GUARD (See Index 49 to 52)
16	B/S 391569	11—10	1	MUFFLER
17	GT 1500	ALL	1	KEY
18	GT 1202	ALL	1	PULLEY
19	GT 1045	11—10—8	2	SPACER (Replaced by GT 1501)
20	GT 1501	11—10—8	1	SPACER
21	GT 1344	11—10—8	1	WASHER
21	GT 1025	5	1	WASHER
22	GT 1091	5	1	SPRING WASHER
22	GT 1247	11—10—8	1	SPRING WASHER
23	GT 1069	11—10—8	1	SET SCREW
23	GT 1064	5	1	SET SCREW
24	GT 520	ALL	1	GRUB SCREW
25	GT 1281	ALL	1	BELT GUIDE
26	GT 1035	ALL	2	FLAT WASHER
26	GT 85	ALL	4	SHAKEPROOF WASHER

INDEX	PART No.	MODEL	QTY	DESCRIPTION
27	GT 1020	ALL	6	NUT — NYLOC
27	GT 73	ALL	4	NUT
28	GT 83	11—10 ELEC	1	BOLT
28	GT 1029	5	2	BOLT
29	GT 1044	11—10	3	BOLT
29	GT 1044	8	4	BOLT
30	GT 1181	ALL	1	SPLIT PIN
31	GT 1262	ALL	1	ROD
32	GT 1180	ALL	1	BUSH
33	GT 1263	ALL	1	TAG
34	GT 1020	ALL	1	NUT
35	GT 4	ALL	2	NUT
36	GT 65	ALL	2	WASHER
37	GT 1009	ALL	2	PULLEY
38	GT 1119	ALL	2	WASHER
39	GT 349	ALL	2	SPRING
40	GT 171	ALL	2	BOLT
41	GT 1012	ALL	2	WASHER
42	GT 730	ALL	2	PIVOT BUSH
43	GT 971	ALL	1	CABLE (Before September, 1977)
43	GT 1345	ALL	1	LINKAGE ROD (From September, 1977) not illustrated
43	GT 167	ALL	1	SPLIT PIN (From September, 1977) not illustrated
44	GT 1034	ALL	1	BOLT (Before September, 1977).
45	GT 1050	ALL	1	WASHER (Before September, 1977).
46	GT 1008	ALL	2	PULLEY
47	GT 1261	ALL	1	PULLEY FRAME
48	GT 1207	ALL	1	SPRING
NOT ILLUSTRATED, USED AFTER OCTOBER 1977.				
49	GT 1367	11 ELEC	1	MUFFLER GUARD BRACKET
50	GT 838	11 ELEC	1	PAD
51	GT 1283	11 ELEC	2	POP RIVETS
52	GT 1136	11 ELEC	2	WASHER

\* See Amendments Page 14

**\*NOTE:** BELTS GT 376 AND 371 ARE OF SPECIAL SIZE AND CONSTRUCTION. REPLACE WITH GENUINE PARTS ONLY. FROM NOVEMBER, 1977 10 HP B/S ENGINES WERE REPLACED BY 11 HP B/S ENGINES.

# ILLUSTRATION 2



# ILLUSTRATION 2.

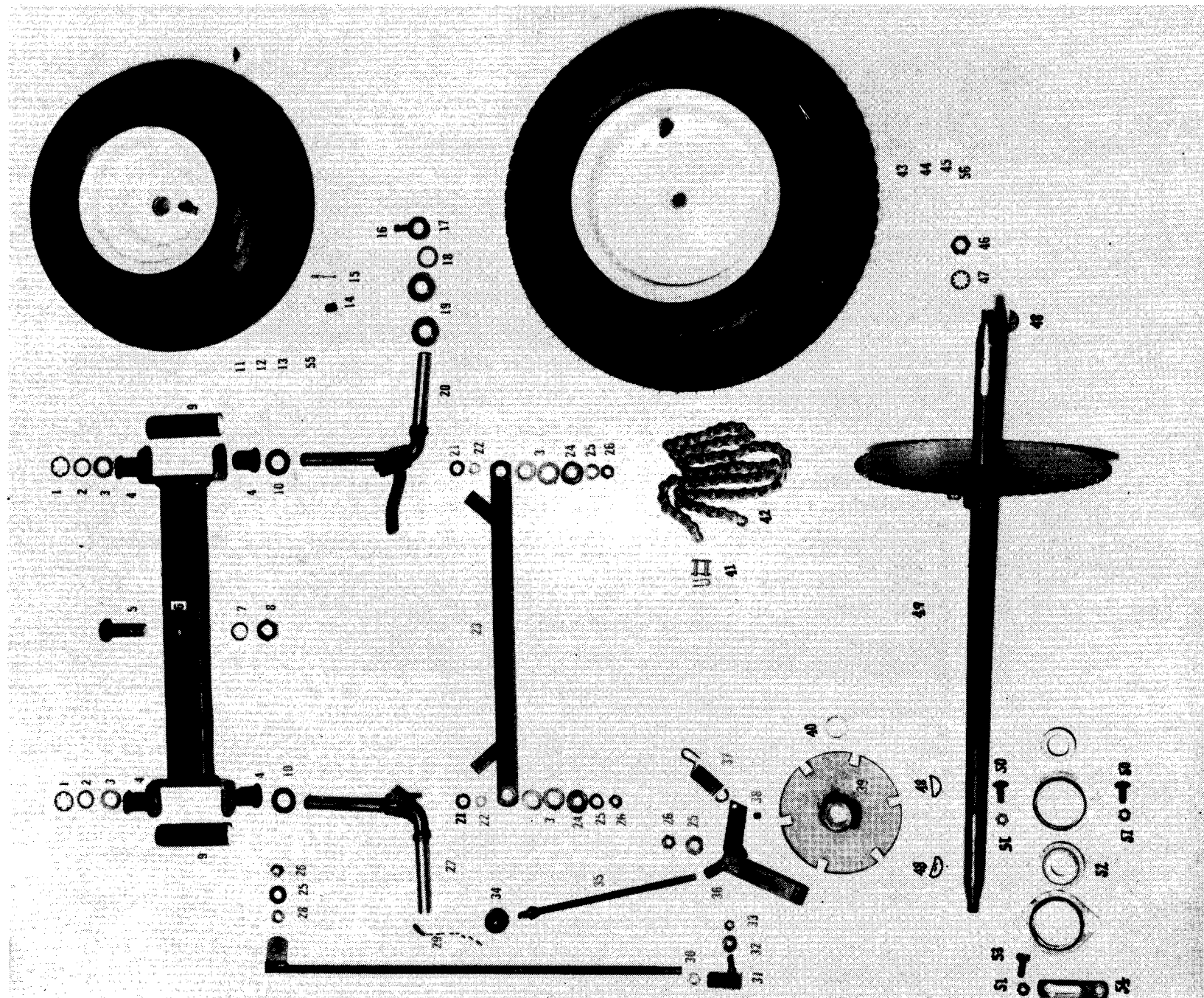
## MAIN FRAME ASSEMBLY

INDEX	PART No.	MODEL	QTY	DESCRIPTION
1	GT 518	ALL	1	KEY
2	GT 956	5	1	VERTICAL STEERING SHAFT
2	GT 970	8	1	VERTICAL STEERING SHAFT
2	GT 963	11—10	1	VERTICAL STEERING SHAFT
3	GT 1179	11—10—8	4	NYLON BUSH
3	GT 1179	5	5	NYLON BUSH
4	GT 628	ALL	1	SHAFT COLLAR
5	GT 1047	ALL	1	GRUB SCREW
6	GT 30	ALL	1	NYLOC NUT
7	GT 1002	ALL	1	FLAT WASHER
8	GT 955	5	1	HORIZONTAL STEERING SHAFT
8	GT 962	11—10—8	1	HORIZONTAL STEERING SHAFT
9	GT 396	ALL	1	BEARING
10	GT 1093	ALL	1	BOLT
11	GT 608	ALL	1	SLIDE BUSH
12	GT 329	ALL	1	BEARING ADAPTOR
13	GT 1012	ALL	5	FLAT WASHER
14	GT 4	ALL	4	NYLOC NUT
15	GT 74	ALL	1	PULLEY COMPLETE
16	GT 642	ALL	1	NOTCH BAR
17	GT 364	ALL	1	SPRING
18	GT 1346	ALL	1	RUBBER DAMPER
19	GT 1028	ALL	1	BOLT
20	GT 37	ALL	2	SHAKE PROOF WASHER
21	GT 1313	ALL	1	SEAT MOUNTING BAR
22	GT 103	ALL	2	BOLT
23	GT 640	ALL	1	SPRING LEAF
24	GT 64	11—10—8	1	SET SCREW
24	GT 1028	5	1	BOLT
25	GT 523	ALL	2	KNOB
26	GT 1336	11—10 ELEC	1	MAIN FRAME ASSEMBLY
26	GT 1316	11—10 RECOIL	1	MAIN FRAME ASSEMBLY
26	GT 1381	8	1	MAIN FRAME ASSEMBLY
	GT 1466	5 ELEC	1	MAIN FRAME ASSEMBLY

INDEX	PART No.	MODEL	QTY	DESCRIPTION
26	GT 1260	5 RECOIL	1	MAIN FRAME ASSEMBLY
27	GT 1312	11—10—8	1	FOOT PEDAL R.H.
27	GT 872	5	1	FOOT PEDAL R.H.
28	GT 1323	ALL	1	HEIGHT ADJUSTMENT LEVER
29	GT 96	ALL	4	BOLT
30	GT 514	ALL	2	CHAIN
31	GT 17	ALL	4	NUT
32	GT 97	ALL	4	NYLOC NUT
33	GT 176	ALL	4	BOLT
34	GT 97	ALL	4	NYLOC NUT
35	GT 99	ALL	1	SPRING PLATE
36	GT 1181	ALL	2	SPLIT PIN
37	GT 1324	11—10—8	1	FOOT PEDAL ROD 2 PIECE
37	GT 1282	5	1	FOOT PEDAL ROD 2 PIECE
38	GT 1005A	11—10—8	1	PIVOT PLATE
38	GT 1005	5	1	PIVOT PLATE
39	GT 1173	ALL	1	BOLT
40	GT 560	5	2	FOOT PEDAL RUBBERS
41	GT 139	ALL	1	CLUTCH FORK 2 PIECE
42	GT 218	ALL	1	TOW BAR PIN
43	GT 1325	11—10—8	1	STAY
44	GT 124	11—10—8	1	BOLT
45	GT 1342	8	1	FOOT PEDAL RUBBER L.H.
45	GT 1225	11—10—8	1	FOOT PEDAL RUBBER R.H.
46	GT 1226	11—10	1	RUNNING BOARD RUBBER L.H.
46	GT 1224	11—10	1	RUNNING BOARD RUBBER R.H.
NOT ILLUSTRATED				
47	GT 164	ALL	1	SPLIT PIN-FOOT PEDAL
48	GT 406	5	1	STEERING ARM
49	GT 83	5	1	BOLT
50	GT 85	5	1	SHAKEPROOF WASHER
51	GT 73	5	1	NUT
52	GT 517	5	1	WOODRUFF KEY

\* See Amendments Page 14

# ILLUSTRATION 3

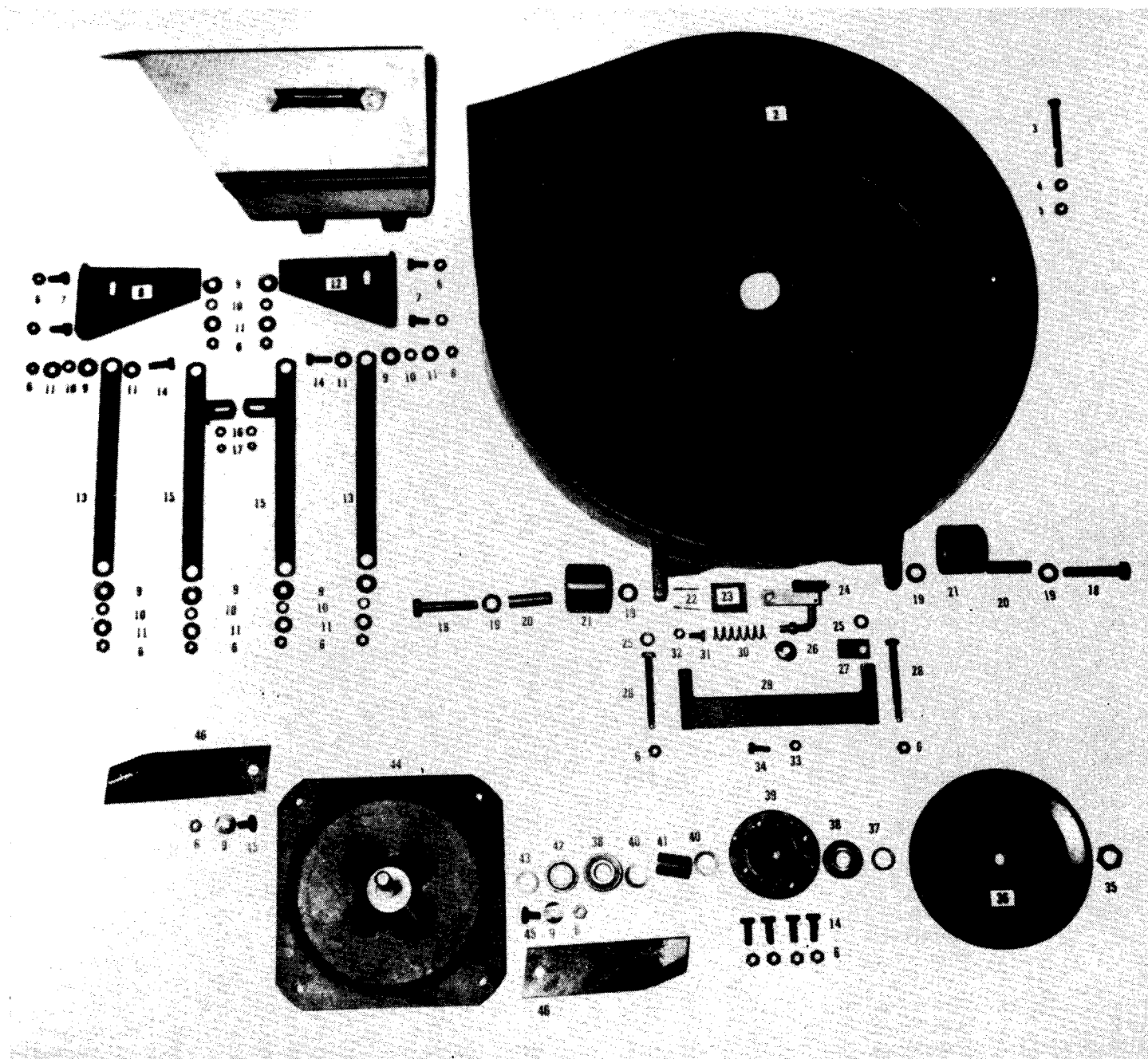


## ILLUSTRATION 3.

## FRONT &amp; REAR ASSEMBLY

INDEX	PART No.	MODEL	QTY	DESCRIPTION	INDEX	PART No.	MODEL	QTY	DESCRIPTION
1	GT 580	ALL	2	RETAINER	31	GT 923	ALL	1	TIE ROD END
2	GT 1070	ALL	2	FIBRE WASHER	32	GT 535	ALL	2	SEAL
3	GT 534	ALL	4	FELT SEAL	33	GT 79	ALL	1	NYLOC NUT
4	GT 1179	ALL	4	NYLON BUSH	34	GT 524	ALL	1	KNOB
5	GT 613	11—10—8	1	PIVOT BOLT	35	GT 1318	11—10	1	HAND BRAKE ROD
5	GT 1031	5	1	PIVOT BOLT	36	GT 1382	8—5	1	PAWL AND HANDLE
6	GT 1315	11—10	1	AXLE BEAM	36	GT 1319	11—10	1	HAND BRAKE PAWL
6	GT 1383	8	1	AXLE BEAM	37	GT 351	ALL	1	SPRING
6	GT 1259	5	1	AXLE BEAM	38	GT 520	ALL	1	GRUB SCREW
7	GT 1018	11—10—8	1	SPRING WASHER	39	GT 924	ALL	1	BRAKE PLATE
8	GT 1017	11—10—8	1	NUT	40	GT 1331	ALL	1	SPACER SPROCKET SIDE
8	GT 1032	5	1	NYLOC NUT	40	GT 1333	ALL	1	SPACER BRAKE SIDE
9	GT 1327	ALL	2	KING PIN COVER	41	GT 501	11—10—8	1	CONNECTING LINK
10	GT 1002	ALL	2	FLAT WASHER	41	GT 504	5	1	CONNECTING LINK
11	GT 455	11—10	2	500 x 6 TYRE	42	GT 500	11—10—8	1	CHAIN
11	GT 456	11—10	2	500 x 6 TUBE	42	GT 512	5	1	CHAIN
11	GT 409	11—10	2	WHEEL HUB	43	GT 472	11—10	2	650 x 8 TYRE
12	GT 1353	8	2	410 x 4 TYRE (SQUARE TREAD)	43	GT 473	11—10	2	650 x 8 TUBE
12	GT 1354	8	2	410 x 4 TUBE	43	GT 443	11—10	2	WHEEL HUB 8 INCH
12	GT 437	8—5	2	WHEEL HUB OUTER	44	GT 1340	8	2	600 x 6 TYRE
12	GT 437	8—5	2	WHEEL HUB INNER	44	GT 1341	8	2	600 x 6 TUBE
12	GT 1030	8—5	6	BOLT H.T.	44	GT 410	8	2	6 INCH, 1 PIECE WHEEL HUB
12	GT 1026	8—5	6	SHAKEPROOF WASHER	PRIOR TO JANUARY, 1978.				
12	GT 17	8—5	6	NUT	(44)	GT 472	8	2	650 x 8 TYRE )
13	GT 466	5	2	410 x 4 TYRE (ROUND TREAD)	(44)	GT 473	8	2	650 x 8 TUBE )
14	GT 471	ALL	4	VALVE CAP	(44)	GT 443	8	2	8 INCH, 1 PIECE WHEEL HUB)
15	GT 470	ALL	4	VALVE CORE	45	GT 464	5	2	530 x 6 TYRE
16	GT 1047	ALL	2	GRUB SCREWS	45	GT 465	5	2	530 x 6 TUBE
17	GT 628	ALL	2	SHAFT COLLAR	45	GT 438	5	2	INNER HUB 6 INCH
18	GT 1070	ALL	2	FIBRE WASHERS	45	GT 439	5	2	OUTER HUB 6 INCH
19	GT 398	ALL	4	BEARING	45	GT 1034	5	6	BOLT
20	GT 1322	11—10	1	KING PIN R.H.	45	GT 85	5	6	SHAKEPROOF WASHER
20	GT 1384	8	1	KING PIN R.H.	45	GT 73	5	6	NUT
20	GT 1272	5	1	KING PIN R.H.	46	GT 178	ALL	2	NUT
21	GT 1012	ALL	2	FLAT WASHER	47	GT 22	ALL	2	SHAKEPROOF WASHER
22	GT 622	ALL	2	PIVOT BUSH	48	GT 516	ALL	3	WOODRUFF KEY
23	GT 1314	11—10	1	TIE ROD	49	GT 958	11—10	1	AXLE & SPROCKET
23	GT 1390	8	1	TIE ROD	49	GT 958	8	1	AXLE & SPROCKET (before January 1978)
23	GT 1057	5	1	TIE ROD 2 PIECE	49	GT 976	8	1	AXLE & SPROCKET (from January 1978)
23	GT 124	5	1	BOLT	49	GT 919	5	1	AXLE & SPROCKET
23	GT 97	5	1	NYLOC BOLT	50	GT 1021	ALL	4	BOLT
24	GT 585	ALL	2	CUP	51	GT 1020	ALL	6	NYLOC NUT
25	GT 1012	ALL	4	FLAT WASHER	52	GT 391	ALL	2	BEARING COMPLETE
26	GT 4	ALL	4	NYLOC NUT	53	GT 1034	ALL	2	BOLT
27	GT 1271	5	1	KING PIN L.H.	54	GT 156	ALL	2	LOCK PLATES
27	GT 1321	11—10	1	KING PIN L.H.	55	GT 965	11—10	2	FRONT WHEEL COMPLETE
27	GT 1385	8	1	KING PIN L.H.	55	GT 913	8	2	FRONT WHEEL COMPLETE
28	GT 730	ALL	1	PIVOT BUSH	55	GT 913	5	2	FRONT WHEEL COMPLETE
29	GT 1320	11—10	1	DRAG LINK	56	GT 946	11—10	2	REAR WHEEL COMPLETE
29	GT 1386	8	1	DRAG LINK	56	GT 978	8	2	REAR WHEEL COMPLETE
29	GT 1270	5	1	DRAG LINK	56	GT 915	5	2	REAR WHEEL COMPLETE
30	GT 78	ALL	1	NUT					

# ILLUSTRATION 4



# ILLUSTRATION 4.

## CUTTING ATTACHMENT ASSEMBLY

INDEX	PART No.	MODEL	QTY	DESCRIPTION
1	GT 891	ALL	1	STONE DEFLECTOR
2	*GT 441	11—10—8	1	CUTTER BASE 28 INCH
2	*GT 419	5	1	CUTTER BASE 25 INCH
3	GT 1264	ALL	1	CRANKED BOLT
4	GT 46	ALL	1	NUT
5	GT 4	ALL	1	NYLOC NUT
6	GT 4	ALL	20	NYLOC NUT
7	GT 103	ALL	4	BOLT
8	GT 1276	ALL	1	SIDE PLATE L.H.
9	GT 579	ALL	10	WAVE WASHERS
10	GT 730	ALL	8	PIVOT BUSH
11	GT 1012	ALL	10	FLAT WASHER
12	GT 1277	ALL	1	SIDE PLATE R.H.
13	GT 1275	ALL	2	BOTTOM LINK
14	GT 171	ALL	6	BOLT
15	GT 1274	ALL	2	TOP LINK
16	GT 1006	ALL	2	FLAT WASHER
17	GT 97	ALL	2	NYLOC NUT
(BEFORE SEPTEMBER, 1977)				
(18)	GT 1227	ALL	2	BOLTS )
(19)	GT 23	ALL	4	FLAT WASHER )
(20)	GT 198	ALL	2	SLEEVES )
(21)	GT 964	ALL	2	WOODEN ROLLER)
22	GT 1283	ALL	2	POP RIVET
23	GT 1267	ALL	1	BRAKE LINING
24	GT 1311	ALL	1	CUTTER BRAKE
25	GT 65	ALL	2	FLAT WASHER
26	GT 585	ALL	1	CUP (Before November, 1977)
27	GT 1326	ALL	1	BELT GUIDE TAG
28	GT 1156	ALL	1	BOLT
28	GT 1234	ALL	1	BOLT
29	GT 1317	ALL	1	BELT GUIDE

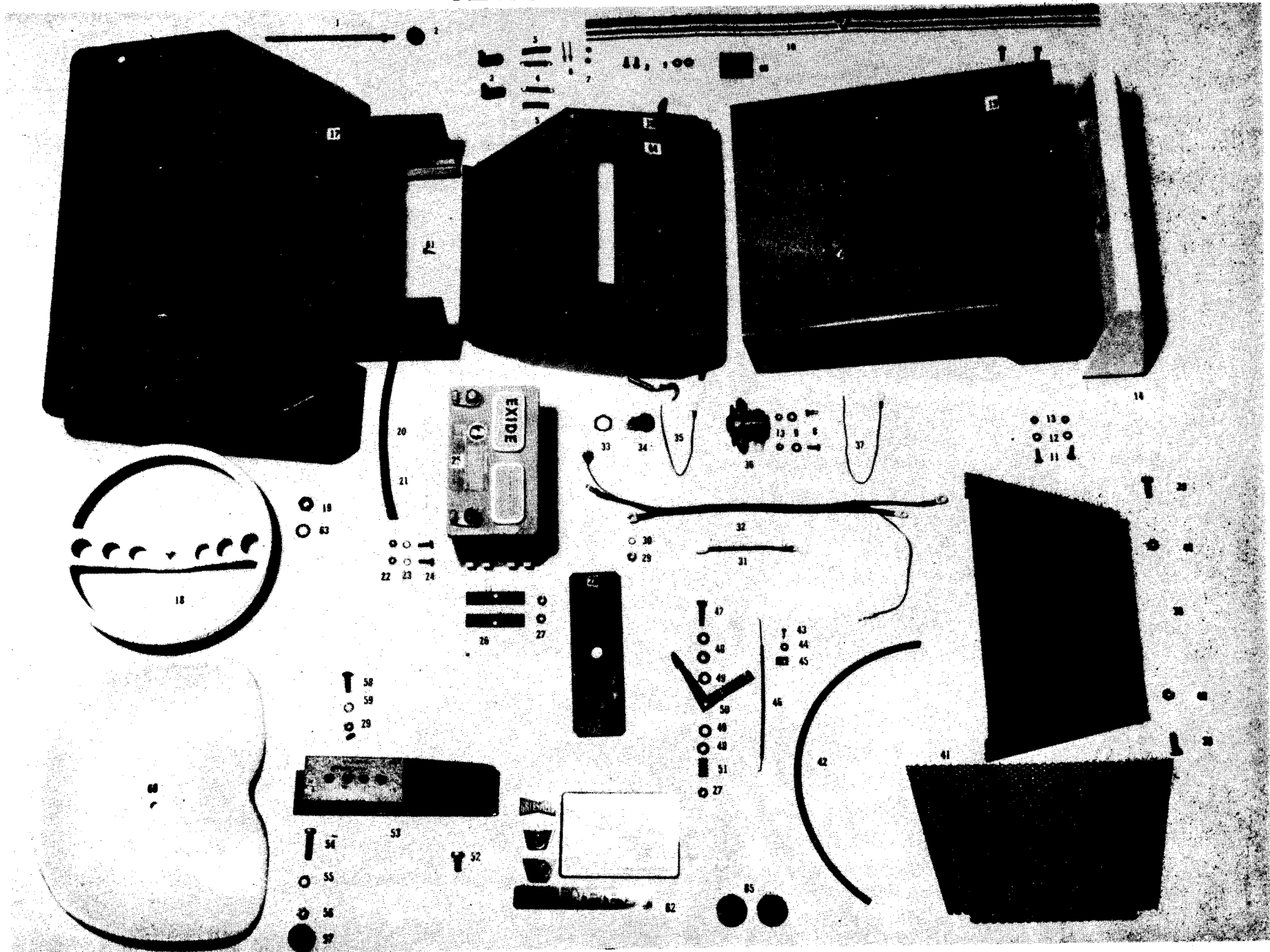
INDEX	PART No.	MODEL	QTY	DESCRIPTION
30	GT 1250	ALL	1	SPRING
31	GT 1301	ALL	1	BOLT (Before November, 1977)
32	GT 73	ALL	1	NUT (Before November, 1977)
33	GT 1020	ALL	1	NYLOC NUT
34	GT 1034	ALL	1	BOLT
35	GT 685	ALL	1	NUT
36	GT 450	ALL	1	PULLEY L.H.
37	GT 811	ALL	1	SPACER
38	GT 395	ALL	2	BEARING
39	GT 417	ALL	1	SPINDLE HOUSING
39	GT 939	ALL	1	SPINDLE HOUSING COMPLETE
40	GT 539	ALL	2	STEEL SHIM
41	GT 241	ALL	1	SPACER
42	GT 589	ALL	1	SEAL
43	GT 635	ALL	1	SPACER
44	GT 930	ALL	1	BLADE HOLDER & SPINDLE L.H.
45	GT 578	ALL	2	BLADE BOLTS
46	GT 894	11—10—8	2	CUTTER BLADE 28 INCH L.H.
46	GT 892	5	2	CUTTER BLADE 25 INCH L.H.
(NOT ILLUSTRATED — FITTED AFTER SEPTEMBER, 1977)				
47	GT 1358	ALL	2	JOCKEY WHEEL BRACKET
48	GT 1365	ALL	2	HUB CAP 4 1/2 INCH WHEEL
49	GT 1364	ALL	2	4 1/2 INCH JOCKEY WHEEL
50	GT 565	ALL	2	JOCKEY WHEEL RETAINER
51	GT 23	ALL	2	FLAT WASHER
52	GT 1021	ALL	4	CUP HEAD BOLT
53	GT 1020	ALL	5	NYLOC NUT
54	GT 1368	ALL	1	BELT GUIDE R.H. LOWER
55	GT 1028	ALL	1	BOLT HIGH CUT STOP
56	GT 4	ALL	1	NYLOC NUT
57	GT 1359	5	1	HIGH CUT STOP CAM.

\* See Amendments Page 14

**NOTE:** BLADE BOLT GT 578 ARE OF SPECIAL SIZE AND CONSTRUCTION, REPLACE WITH GENUINE PARTS ONLY.

\*GT 419 AND GT 441 ARE AVAILABLE WITH OR WITHOUT JOCKEY WHEEL MOUNTING LUGS.

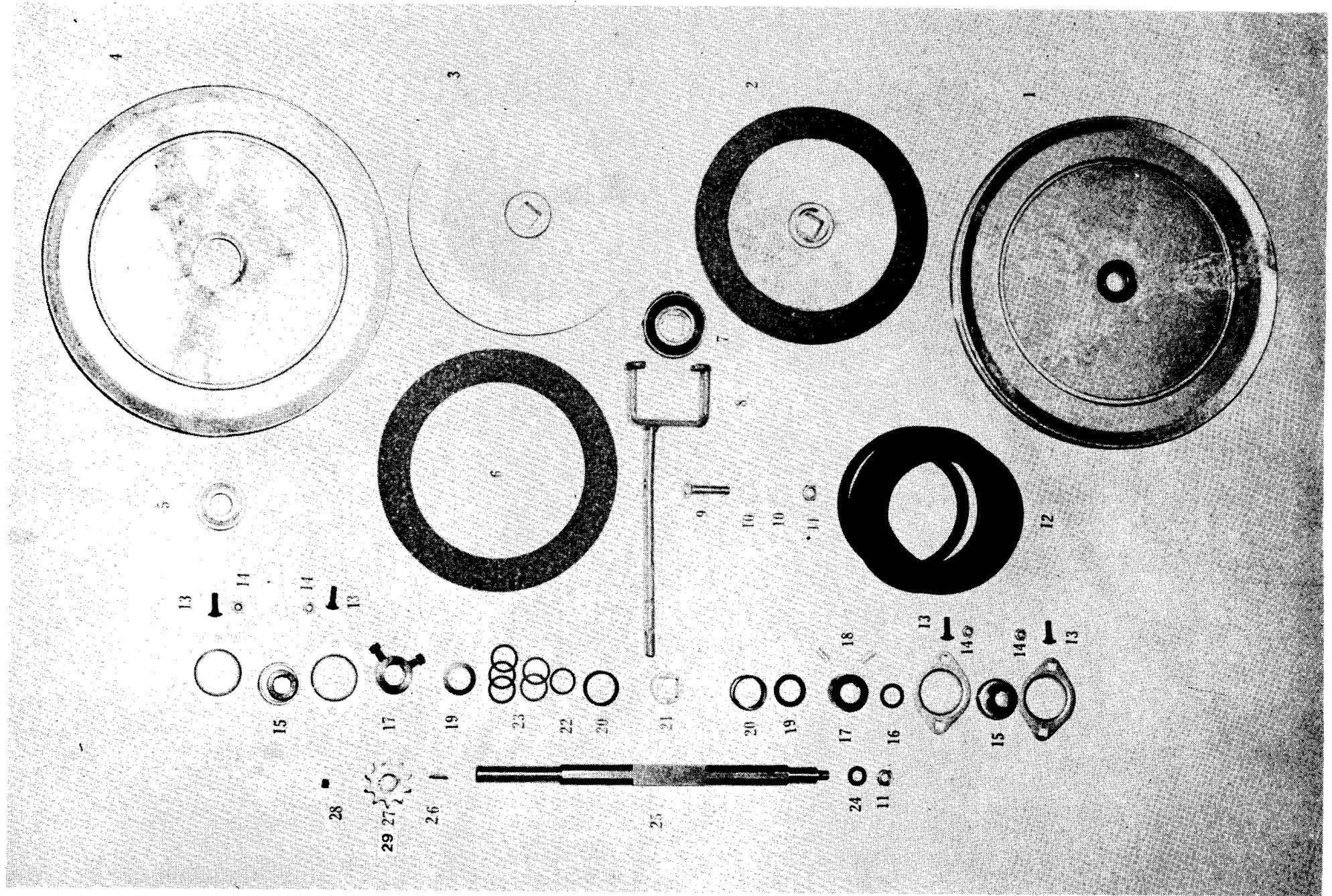
# ILLUSTRATION 5



INDEX	PART No.	MODEL	QTY	DESCRIPTION
1	GT 1318	11—10	1	BRAKE ROD
2	GT 524	ALL	1	KNOB
3	GT 1241	ALL	2	BONNET CATCH
4	GT 1240	ALL	2	SPRING
5	GT 1347	ALL	2	SPRING COVER
6	GT 576	ALL	2	POP RIVET
7	GT 1245	ALL	2	FLAT WASHERS
8	GT 102	ALL	4	BOLT
9	GT 1006	ALL	4	FLAT WASHERS
10	GT 1232	11—10—8	1	FRONT DECAL
11	GT 176	11—10	6	BOLT
12	GT 1006	11—10	4	FLAT WASHER
13	GT 97	11—10	8	NYLOC NUT
14	GT 1223	11—10	1	NOSE CASTING
15	GT 1307	11—10	1	FRONT BONNET
15	GT 1387	8	1	FRONT BONNET
15	GT 1278	5	1	FRONT BONNET
16	GT 1335	11—10 ELEC	1	STEERING COWL
17	GT 1308	11—10	1	REAR COVER
17	GT 1388	8	1	REAR COVER
17	GT 868	5	1	REAR COVER
18	GT 440	ALL	1	STEERING WHEEL
19	GT 194	ALL	1	NUT
20	GT 548	11—10—8	1	RUBBER STRIP
21	GT 553	11—10 ELEC	1	PAD
22	GT 17	11—10 ELEC	2	NUT
23	GT 1026	11—10 ELEC	2	SHAKEPROOF WASHER
24	GT 176	11—10 ELEC	2	BOLT
25	GT 1439	5	1	BATTERY
25	GT 1233	11—10 ELEC	1	BATTERY 12 VOLT
26	GT 1337	11—10 ELEC	2	BATTERY CLAMPS
27	GT 1020	11—10 ELEC	3	NYLOC NUT
28	GT 1338	11—10 ELEC	1	BATTERY COVER
29	GT 73	11—10 ELEC	1	NUT
30	GT 1249	11—10 ELEC	1	SPRING WASHER
31	GT 1370	5	1	WIRING HARNESS
31	GT 1189	11—10 ELEC	1	CABLE RED +
32	GT 1369	5	1	CABLE RED +
32	GT 972	11—10 ELEC	1	WIRING HARNESS
33	NO NBR	11—10 ELEC	1	NUT (PART OF SWITCH)
34	GT 1237	11—10 ELEC	1	STARTER SWITCH (KEY TYPE GT 1537)
35	GT 1348	11—10 ELEC	1	SWITCH CABLE SHORT
36	GT 1433	5	1	STARTER SWITCH (PUSH TYPE)
36	GT 1432	5	1	KNOB
36	GT 1236	11—10 ELEC	1	SOLENOID
37	GT 1349	11—10 ELEC	1	SWITCH CABLE LONG
38	GT 1310	11—10	1	GRILL MOUNTING FRAME
39	GT 35	11—10—8	2	BOLT
39	GT 1034	5	2	BOLT

INDEX	PART No.	MODEL	QTY	DESCRIPTION
40	GT 4	11—10—8	2	NYLOC NUT
40	GT 1020	5	2	NYLOC NUT
41	GT 1292	11—10	1	GRILLE
41	GT 1389	8	1	GRILLE
41	GT 1055	5	1	GRILLE
42	GT 1351	11—10—8	5	ANTI RATTLE TUBE
43	GT 1238	11—10—8	1	SCREW
44	GT 1006	11—10—8	1	WASHER
45	GT 1252	11—10—8	1	CLAMP
46	GT 1251	11—10—8	1	CABLE
47	GT 1044	ALL	1	BOLT
47	GT 102	5	1	BOLT (Before January, 1978)
48	GT 1035	ALL	3	WASHER
48	GT 1006	5	1	WASHER (Before January, 1978)
49	GT 1046	ALL	2	FRICTION WASHER
50	GT 1058	11—10—8	1	THROTTLE LEVER
50	GT 847	5	1	THROTTLE LEVER
50	GT 1051	11—10—8	1	THROTTLE LEVER KNOB
50	GT 1074	5	1	THROTTLE LEVER & CABLE (Before Jan. '78)
51	GT 1294	ALL	1	SPRING
52	GT 103	11—10—8	1	BOLT
53	GT 184	11—10—8	1	SEAT SPRING
54	GT 64	11—10—8	1	SET SCREW
55	GT 37	11—10—8	1	SHAKEPROOF WASHER
56	GT 1106	11—10—8	1	LOCK NUT
57	GT 1228	11—10—8	1	SEAT STOP RUBBER
58	GT 157	11—10—8	1	BOLT
58	GT 1028	5	1	BOLT
59	GT 85	11—10—8	1	SHAKEPROOF WASHER
60	GT 412	10—8	1	CAST SEAT
60	GT 869	5	1	SEAT FRAME
60	GT 573	5	1	SEAT COVER
60	GT 582	5	1	SEAT COVER RETAINING WIRE
60	GT 1449	11	1	PADDED SEAT
60	GT 1431	11	1	PADDED SEAT MOUNTING BRACKET
60	GT 1301	11	4	SET SCREWS
61	GT 1239	11—10—8	1	DRILL KWIK SCREW
62	GT 1231	ALL	1	DECAL SHEET
63	GT 22	ALL	1	SHAKE PROOF WASHER
64	GT 1309	11—10—8 RECOIL	1	STEERING COWL
64	GT 1279	5	1	STEERING COWL
65	GT 973	ALL	2	BONNET CLIP CONVERSION PLATES
66	GT 1352	11—10 ELEC	1	INSULATING PAD
NOT ILLUSTRATED				
	GT 1371	5	2	BOLT H.T. CYLINDER HEAD
	GT 1372	5	1	BATTERY CARRIER
	GT 1373	5	1	BATTERY STRAP
	GT 1374	5	1	BATTERY STRAP SPRING X BONNET CATCH
	GT 1375	5	1	BATTERY STRAP CLIP

# ILLUSTRATION 6



## ILLUSTRATION 6.

### REAR DRIVE CLUTCH ASSEMBLY

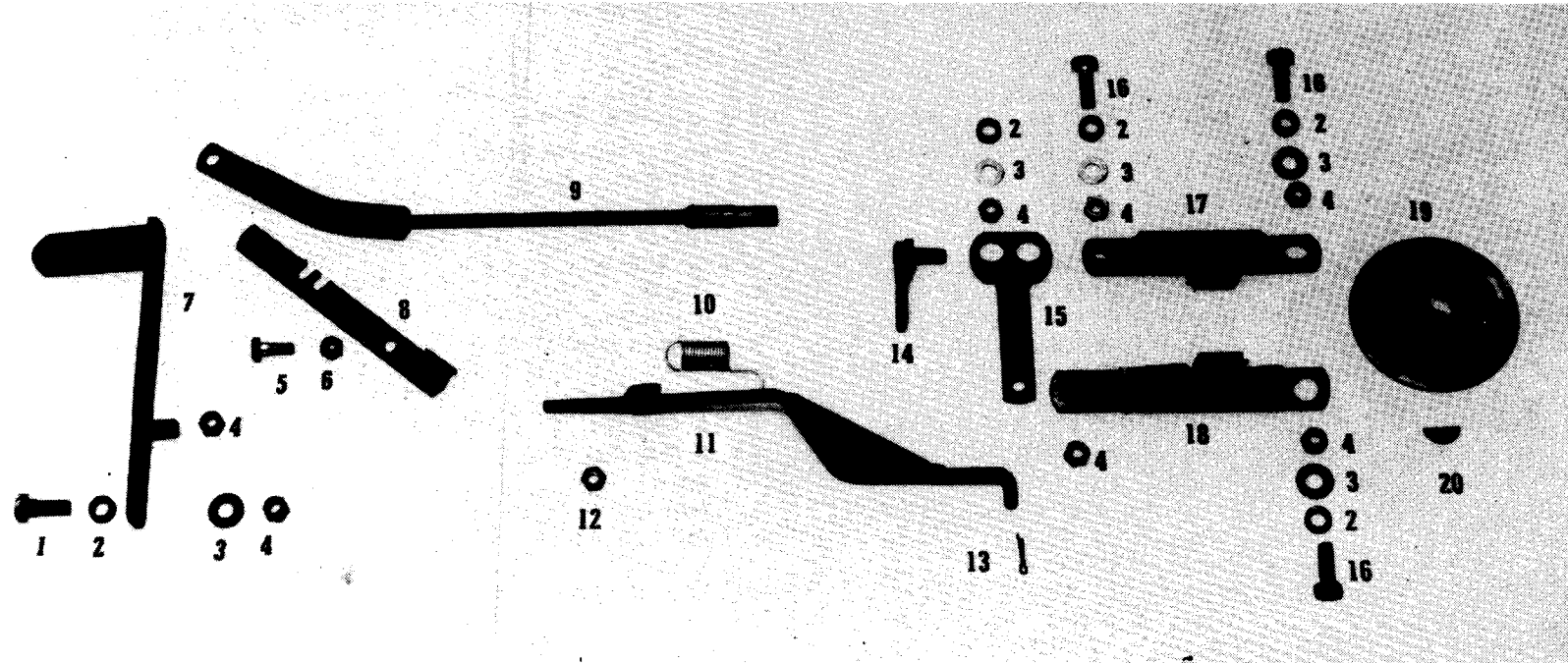
INDEX	PART No.	MODEL	QTY	DESCRIPTION
1	GT 920	ALL	2	PULLEY WITH BEARING
2	GT 926	ALL	2	PLATE WITH LINING
3	GT 404	ALL	2	PLATE BARE
4	GT 401	ALL	2	PULLEY BARE
5	GT 395	ALL	2	BEARING
6	GT 567	ALL	2	LINING
7	GT 927	ALL	1	BEARING AND INSERT
8	GT 139	ALL	1	CLUTCH FORK 2 PIECE
9	GT 1173	ALL	1	BOLT
10	GT 1012	ALL	2	WASHER
11	GT 4	ALL	1	NYLOC NUT
12	*GT 371	ALL	1	BELT-WHEEL DRIVE
13	GT 124	ALL	4	BOLT
14	GT 97	ALL	4	NYLOC NUT
15	GT 392	ALL	2	BEARING AND PLATES
16	GT 543	ALL	1	SPACER
17	GT 618	ALL	2	COLLAR (Before November, 1977)
17	GT 347	ALL	2	NUT 20M.M. (After October, 1977)
18	GT 1047	ALL	4	GRUB SCREW (Before November, 1977)
19	GT 539	ALL	2	STEEL SHIM
20	GT 357	ALL	2	NEUTRAL SPRING
21	GT 405	ALL	1	BEARING INNER
22	GT 542	ALL	1	STEEL SHIM
23	GT 544	ALL	6	FIBRE SHIM (Before November, 1977)
24	GT 65	ALL	1	WASHER
25	GT 803	ALL	1	SQUARE DRIVE SHAFT (Before Nov. 1977)
25	GT 1363	ALL	1	SQUARE DRIVE SHAFT (After Oct. 1977)
26	GT 517	ALL	1	KEY
27	GT 252	11—10—8	1	10 TOOTH SPROCKET
28	GT 519	ALL	1	GRUB SCREW
29	GT 835	5	1	9 TOOTH SPROCKET

\* See Amendments Page 14

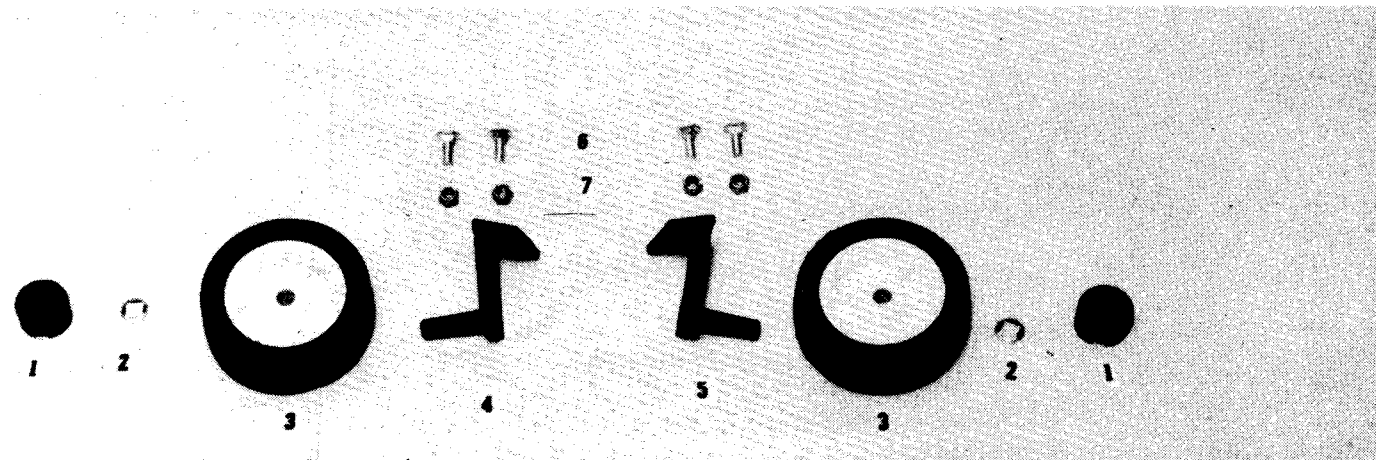
**NOTE:** GT 803 SQUARE DRIVE SHAFT REPLACED BY GT 1363  
618 COLLAR REPLACED BY GT 347 NUT. THIS MODIFICATION IS INTERCHANGEABLE WITH  
GT 803 AND 618.

\*GT 371 DRIVE BELT IS OF SPECIAL SIZE & CONSTRUCTION. REPLACE WITH GENUINE PART  
ONLY.

## ILLUSTRATION 7



## ILLUSTRATION 8



## AMENDMENTS

### ILLUSTRATION 7.

#### DISC BRAKE & LINKAGE 11VE

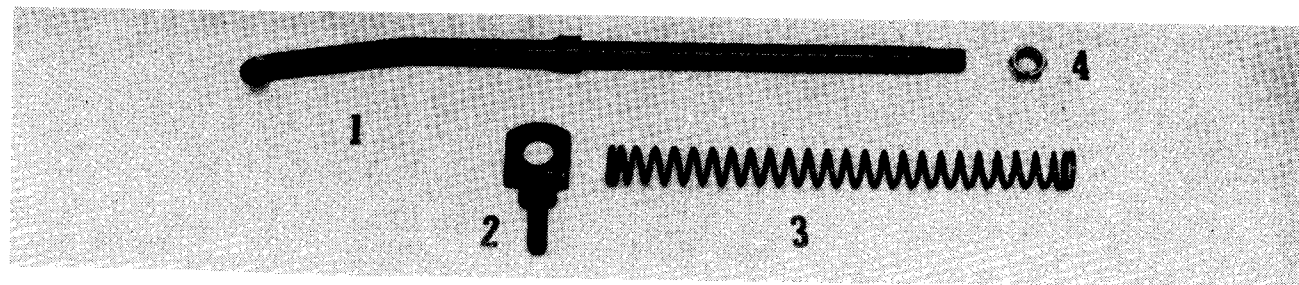
INDEX	ILLUS No.	PART No.	MODEL	QTY	DESCRIPTION
1	3	GT 171	11	1	BOLT
2	3	GT 730	11	5	PIVOT BUSH
3	3	GT 1012	11	5	WASHER
4	3	GT 4	11	7	NUT
5	3	GT 1034	11	1	BOLT
6	3	GT 1020	11	1	NYLOC NUT
7	3	GT 1515	11	1	BRAKE PEDAL
8	3	GT 1514	11	1	PARKING LATCH
9	3	GT 1518	11	1	BRAKE ROD FRONT
10	3	GT 351	11	1	BRAKE RETURN SPRING
11	3	GT 1519	11	1	BRAKE ROD REAR
12	3	GT 73	11	1	NUT
13	3	GT 142	11	1	SPLIT PIN
14	3	GT 1523	11	1	CALLIPER LINK PLATE
15	3	GT 1522	11	1	CALLIPER CAM PLATE
16	3	GT 1169	11	3	SET SCREW
17	3	GT 1521	11	1	CALLIPER RH SHORT
18	3	GT 1520	11	1	CALLIPER LH LONG
19	3	GT 1512	11	1	BRAKE DISC & BOSS
20	3	GT 516	11	1	KEY

### ILLUSTRATION 8.

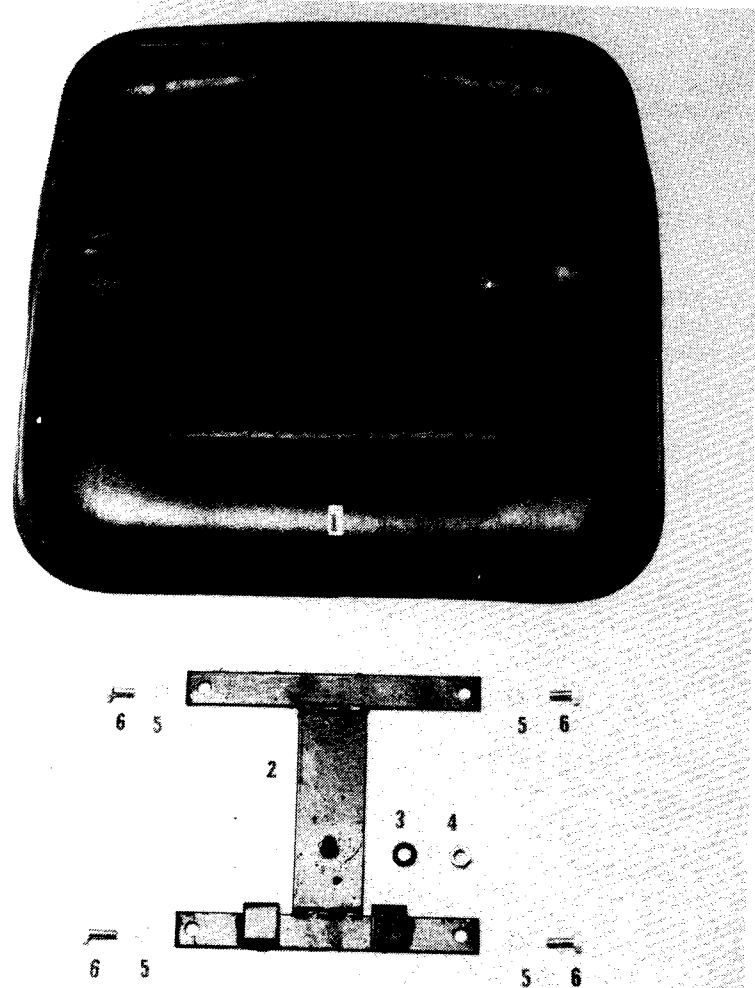
#### JOCKEY WHEEL ASSEMBLY

INDEX	ILLUS No.	PART No.	MODEL	QTY	DESCRIPTION
1	4	GT 1365	11—8	2	HUB CAP
2	4	GT 565	11—8	2	JOCKEY WHEEL RETAINER
3	4	GT 1364	11—8	2	4½" JOCKEY WHEEL
4	4	GT 1524	11—8	1	JOCKEY WHEEL BRACKET LH
5	4	GT 1525	11—8	1	JOCKEY WHEEL BRACKET RH
6	4	GT 1021	11—8	4	CUP HEAD BOLT
7	4	GT 1020	11—8	4	NUT

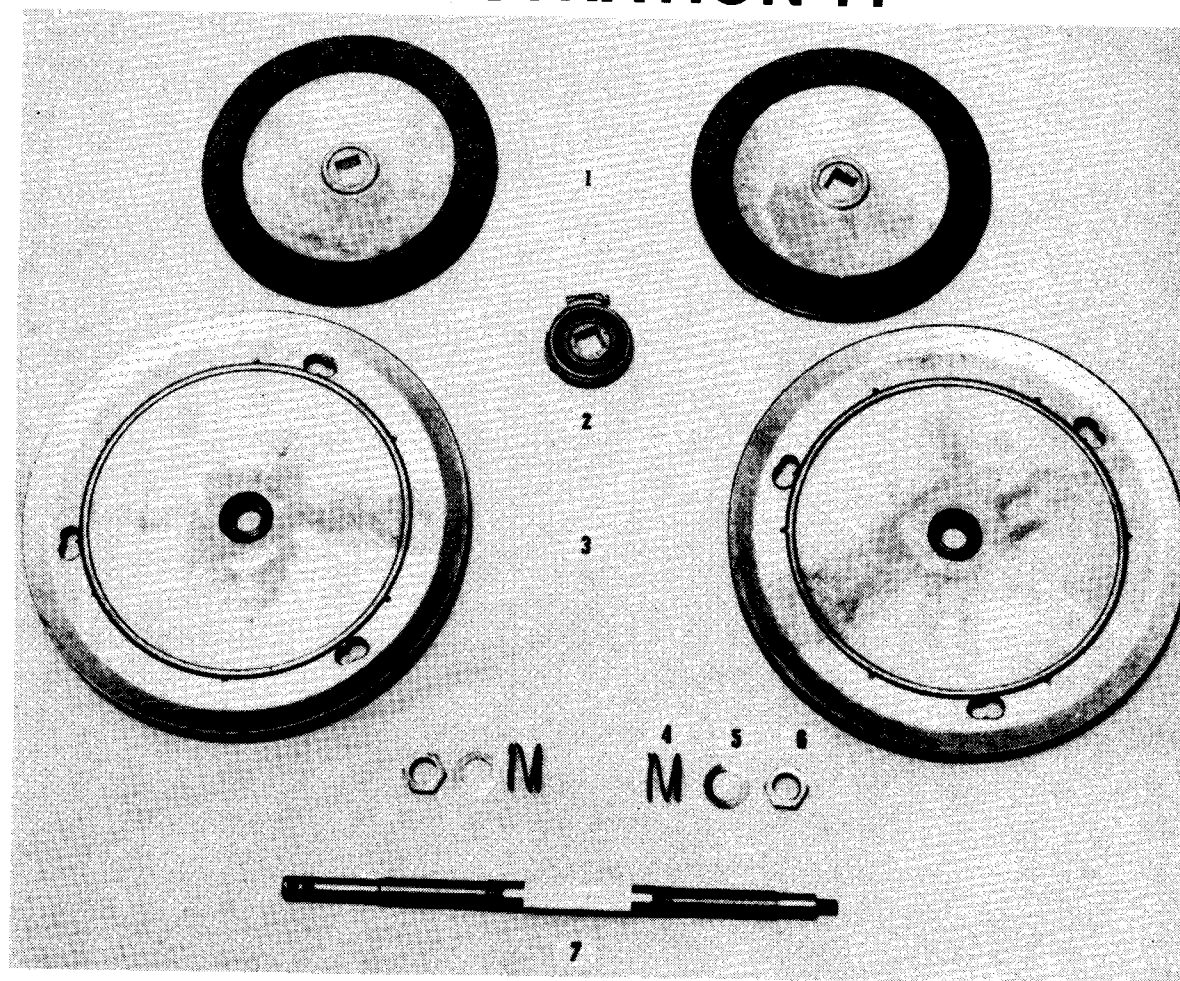
# ILLUSTRATION 9



# ILLUSTRATION 10



# ILLUSTRATION 11



**ILLUSTRATION 9.****BLADE BELT TENSION ASSEMBLY (1979)**

INDEX	ILLUS No.	PART No.	MODEL	QTY	DESCRIPTION
1	1	GT 1513	11—8	1	ROD
2	1	GT 1526	11—8	1	TAG
3	1	GT 1604	11—8	1	SPRING
4	1	GT 4	11—8	1	NUT

**ILLUSTRATION 10.****CUSHION SEAT ASSEMBLY**

INDEX	ILLUS No.	PART No.	MODEL	QTY	DESCRIPTION
1	5	GT 1527	11	1	SEAT COMPLETE
2	5	GT 1431	11	1	SEAT MOUNTING BRACKET
3	5	GT 1091	11	1	SPRING WASHER
4	5	GT 36	11	1	NUT
5	5	GT 85	11	4	SHAKEPROOF WASHER
6	5	GT 1455	11	2	SET SCREW
6	5	GT 1301	11	2	SET SCREW

**ILLUSTRATION 11.****DRIVE ASSEMBLY  
(AFTER OCTOBER 1977)**

INDEX	ILLUS No.	PART No.	MODEL	QTY	DESCRIPTION
1	6	GT 926	11—8	2	DRIVE PLATE AND LINING
1	6	GT 404	11—8	—	DRIVE PLATE ONLY
1	6	GT 567	11—8	—	DRIVE LINING
2	6	GT 927	11—8	1	THRUST BEARING ASSEMBLY
2	6	GT 393	11—8	—	THRUST BEARING ONLY
2	6	GT 405	11—8	—	THRUST BEARING CENTRE
2	6	GT 1539	11—8	—	THRUST BEARING OUTER CLIP
3	6	GT 920	11—8	2	DRIVE PULLEY COMPLETE
3	6	GT 401	11—8	—	DRIVE PULLEY ONLY
3	6	GT 395	11—8	—	DRIVE PULLEY BEARING
4	6	GT 357	11—8	2	NEUTRAL SPRING
5	6	GT 539	11—8	2	SHIM BEARING PROTECTOR
6	6	GT 347	11—8	2	LOCK NUT 20MM.
7	6	GT 1363	11—8	1	SQUARE DRIVE SHAFT

# GREENFIELD TRACTOR MOWER

## OPERATING INSTRUCTIONS

11 H.P., 10 H.P., 8 H.P., 5 H.P. 4 Cycle Briggs & Stratton Engine, & Honda.

### BEFORE STARTING:

**Fuel Tank:** Top up with STANDARD petrol. Make sure the petrol is free from impurities or water.

**Crankcase:** Check oil level with machine on level ground. Top up to the mark indicated on the dip stick (11, 10 and 8 H.P.), or to overflowing (5 H.P.).

**IMPORTANT:** DO NOT OVERFILL. Engine oil should be changed after first 3 hours operation and every 15 hours thereafter. Change engine oil more often if operating in heavy or dusty conditions. USE AMPOL GT MOTOR OIL 20/50 S.E.

**Air Cleaner:** Clean and refit as per engine instructions leaflet. Air cleaner pad must be re-oiled. If operating in dusty conditions, frequent servicing will be necessary. Do not operate without the filter.

**Rear Wheel Nuts:** Check tension before using. (Size ½" SAE).

**Drive Belts:** Inspect belts for damage. Check the operation of the automatic tensioners.

**Blades:** Check the condition of the blades and bolts. Tighten if necessary. Replace if damaged or worn. Use genuine parts only.

**Tyres:** Check tyre pressures. Correct pressures 20 P.S.I. All 4 wheels must be equal. **Don't overinflate.**

### START:

**Hand Brake:** Engage when starting.

**Engine Clutch:** Disconnect (OUT). This disengages the cutters.

**Fuel:** Turn on petrol tap (if fitted), refer engine instructions for location.

**Throttle:** Set control to start position or choke.

**Starter:** Pull cord steadily. When engine starts allow the cord to retract slowly.

### EVERY 15 HOURS:

**Crankcase:** Drain oil whilst hot and refill to correct level. Use AMPOL GT oil. DO NOT OVERFILL. Refer to engine maker's instructions.

### TO STOP:

**Hand Brake:** Engage.

**Engine Clutch:** Disconnect fully (OUT).

**Engine:** Allow to idle and cool down for a minute or two before switching off.

**Throttle:** Set control to stop position.

**Fuel:** Turn petrol tap off (if fitted).

**Cleaning:** Clean the grass and debris from the top of the blade housing after mowing. When washing the machine do not use a high pressure hose as this will

force water into the bearings, clutches, etc. Wipe over with a damp cloth. Do not attempt to clean when engine or blades are operating.

**Storing:** Store in a cool, dry place. If storing for any length of time, drain fuel from tank, etc. Refer engine instruction leaflet.

### ELECTRIC START MODELS:

**To start:** Set throttle lever on start, or choke position, before operating the starter button if the engine is cold. If the throttle lever is in the stop position, the motor will not start. Operate the starter button for short periods only, prolonged starter use can overheat the wiring circuit, and damage the starter motor. Remember, if the engine does not start readily it is not the fault of the starting system. Check petrol, spark plug, etc. or suspect flooding. The Briggs & Stratton is magneto operated i.e. the current to the spark plug is independent of the starting battery. If the engine turns over slowly, suspect a flat battery.

**Battery:** Check fluid level in battery regularly. Top up with distilled water to cover the internal plates when required. EASY FILL BATTERY. Top up with distilled water as per instructions printed on the battery. Keep battery charged if stored. Trickle charge only (2—3 amps).

### GENERAL INSTRUCTIONS:

#### All Models

**Operating:** Your Greenfield can be driven with or without the blades turning. The pivoted foot pedal controls forward and reverse movement. Reverse also doubles as a brake, but sudden direction reversal and wheel spinning should be avoided. Increased toe or heel pressure provide speed variations from 0—6 m.p.h. as required.

**REMEMBER:** Don't stand on the pedal. A light toe or heel pressure is all that is necessary. If a higher pressure appears necessary in forward, suspect fractured internal cords in the drive belt. The belt should be replaced, (part number GT 371).

**Hand Brake:** Release from lock. Do not force the lever. It will spring into a locking notch if moved slightly forward or backwards.

**Belts:** Greenfields are fitted with 2 independent drives. One drive belt propels the unit and the other drives the attachments through the engine clutch. Both belts are self-adjusting. If the belts are replaced, use GENUINE BELTS ONLY BRANDED GREENFIELD. Cutter belt No. GT 376, Drive belt No. GT 371. Genuine GREENFIELD belts are of special construction for longer service. Substitutes must not be used.

**Belt Replacement:** (Rear drive and cutter belt). 5 H.P. Remove bolt under seat cover. 11, 10 & 8 H.P. remove one bolt and one nut securing the seat spring. The hand brake rod unscrews by applying a spanner to the nut under the black knob. Remove seat and rear cover to expose the automatic belt adjustment mechanism. NOTE: The blade belt must be removed from the engine pulley before drive belt can be replaced.

**To Replace Blade Belt:** Remove seat and rear cover as before. Set the height adjustment on low cut. The hexagon pivot bolts for the return idler pulleys are located, one on each side, under the main frame runners just in front of the rear wheel. Screw the bolts out approximately  $\frac{3}{8}$ ", do not remove them, once the bolts are clear of the inner pulley mounting bracket. The two pulleys will swing forward from the belt guides and allowing easy removal of the belt. Remove the belt from the engine pulley as before. Swing the cranked bolt in front of the blade pulley to one side to allow the old belt to be removed and the new belt fitted. Fit the belt to the idler pulleys and swing back into position. Tighten the pivot bolts, reposition the cranked bolt and the belt stop pin close to their respective pulleys. Pull the motor over and check that the belts follow their correct paths and can be tensioned before fitting the rear cover and seat.

**To replace drive belt:** Directly under the seat between the large pulleys is a rod, under the rod at the rear is a flat leaf spring, depress the spring and pull the idler pulley back against the coil spring fitted over the rod, lock in this position by

inserting a nail in the hole in the slide plate. Remove the belt from the idler pulley and pull it back clear of the large drive pulleys. Loosen the two nuts securing the belt stop pin located under the engine plate in front of the crankshaft double pulley. Slots in the stop pin mounting plate will allow the pin to be moved forward, both belts can now be removed. Pull the drive belt out from the rear. Fit the new drive belt following the same path to the small pulley groove on the engine, fit the belt to the return idler pulley and over the large drive pulleys, ensure the belt sits on top of the two flat idler pulleys located between the main frame about centre of the machine. Remove the nail, allow the idler pulley to slowly run up the automatic belt adjustment to take up the slack. The pulley must slide easily and not jam.

**Seat Adjustment:** 5 H.P. Seat Adjustment stud is located under the seat cover. Loosen stud and slide seat forward or back as desired. This adjustment stud also secures the back cover.

11—10—8 H.P. Four holes in the seat spring provide adjustment, remove the nut under the seat and relocate the seat.

## HINTS TO HELP YOU

**Engine Clutch:** From the seated position, the lever on the left hand side is the engine clutch cover. This must be applied slowly (like a clutch on a car). To release, just push forward fully. It takes about 6 seconds for the blades to stop. An automatic pulley brake is fitted.

**Height Adjustment:** The height adjustment lever is located near your right knee, pull out and up to high, and down to low. This can be done on the move or stationary.

### Maintenance:

**Rear Chain — to Adjust:** Rear chain adjustment is located on the rear axle. Loosen off the 3 clamp bolts on each side of the axle. Tension axle backwards on BOTH sides until the chain is correctly tensioned, then secure clamp bolts. **CAUTION:** It's important that the two sprockets be in correct alignment. Check carefully. Once a year, the chain should be removed, thoroughly cleaned with kerosene and lubricated with AMPOL roller chain lubricant. If the chain is worn, replace. A worn chain will damage the sprockets.

**Steering Adjustment:** The steering gear mesh is adjustable by tightening the nut on the horizontal shaft and or lowering the vertical steering shaft. When the tops of the gears are level, the mesh is correct. DO NOT OVERTIGHTEN. Make sure the lock screws are tight.

**Rear Wheel Nuts:** The rear wheel nuts ( $\frac{1}{2}$ " SAE) should be checked for tension after the first few hours of operation and occasionally thereafter.



## **GUARANTEE**

*Greenfield Products Pty. Ltd., the manufacturer, guarantee their product free of faulty workmanship and material for a period of six months to the original purchaser. Rear drive clutch linings are guaranteed for 2 (two) years to the original purchaser. Blades, belts, tyres and tubes are excluded. Fair wear and tear, damage caused by misuse, neglect and accidents are not covered. Engines used on Greenfield Tractors carry the respective manufacturer's warranty. Parts considered to be faulty should be returned to the factory either direct or through the local dealer with all necessary information and freight paid, for inspection. In all warranty claims, the Manufacturer's decision is final and binding.*

**P.O. Box 155,  
ROCKLEA,  
Brisbane, Q. 4106.  
AUSTRALIA.**

**GREENFIELD PRODUCTS PTY. LTD.  
Acacia Ridge, Brisbane, Qld.  
Australia.**