

Greenfield

"Excellence through Innovation"

PiecemakerTM

CHIPPER SHREDDER

MODELS

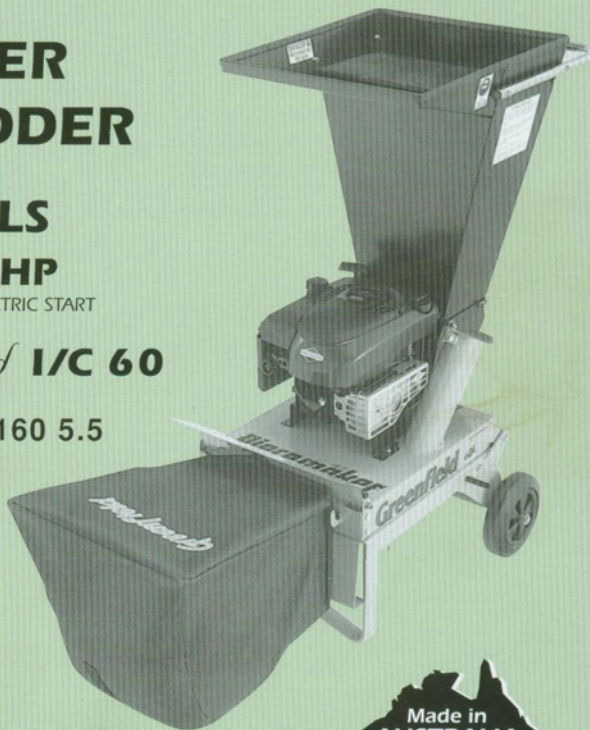
I/C 8.5 HP

MANUAL OR ELECTRIC START



Diamond **I/C 60**

HONDA GCV 160 5.5



OWNER'S MANUAL

INSTRUCTIONS AND SPARE PARTS

Greenfield Mowers Pty Ltd

172 Ingram Rd, Acacia Ridge, Qld. Australia 4110. Fax (07) 3344 1161. Phone (07) 3345 6100
Web Site: <http://www.greenfield.com.au> - Email: greenfld@gil.com.au

PIECEMAKER - CHIPPER SHREDDER

CHIPPER - SHREDDER

CONTENTS

Safety Instructions	2
Operating Instructions	
Before Starting	3
To Start	3
To Stop	4
To Operate	4
Transporting	5
For Best Results	6
To Inspect Shredding Chamber	7
To Clear a Blockage	7
Maintenance	
Fuel	8
Oil	8
Cleaning	9
Blades	
Remove and Replace	10
Spare Parts B&S 60 & Honda 5.5	
Chassis	12
Disc Assembly	13
Spare Parts B&S 8.5 I/C	
Chassis	14
Disc Assembly	15
Service Record	16
Guarantee	17



Greenfield Products Pty Ltd

All details are correct at time of printing but are subject to change without notice.

GF33550402

Thank you for buying an Australian made Greenfield Chipper Shredder. Follow the manufacturers safety, operating and maintenance instructions and many years of trouble free service can be expected.

SAFETY INSTRUCTIONS

- Study these instructions carefully before using this Greenfield Chipper/Shredder.
 - We remind you that a Chipper/Shredder is a cutting device, used incorrectly or without due respect it could cause serious personal injury.
1. Do not allow any person unfamiliar with the safe operating procedure to operate the Chipper/Shredder.
 2. Do not allow children to operate the Chipper/Shredder.
 3. Know your controls. Learn how to stop the engine quickly in an emergency.
 4. Do not place hands or any other body parts inside feeding chambers or discharge chute.
 5. Do not place your head over either feeding chamber or look in while Chipper/Shredder is running.
 6. Remove all bystanders and pets from the operating area, particularly children.
 7. Do not wear loose clothing, watches or jewellery.
 8. Use protective eyewear and hearing protection (safety glasses are provided)
 9. Wear heavy gardening gloves and safety footwear.
 10. Stay clear of the discharge area when the Chipper/Shredder is operating.
 11. Keep the Chipper/Shredder in good working condition. Before every use check for loose nuts and bolts, missing parts and that guards and deflectors are fitted and functioning properly.
 12. Do not run the engine in a confined space where poisonous exhaust fumes, carbon monoxide can collect. Carbon monoxide is a colourless, odourless, deadly poisonous gas.
 13. Never place any garden tool or any object not required to be shred in either feed chamber. Damage to the Chipper/Shredder will occur and possible personal injury.
 14. Do not move the machine to another position while the engine is running.
 15. Refuel outdoors only over a non flammable surface. Do not smoke while fuelling engine, or fuel near a source of ignition such as electrical switches or a gas hot water heater.
 16. Never remove the cap off the fuel tank or add petrol while the engine is running or if the engine is hot, allow it to cool. Remove fuel cap slowly to relieve any tank pressure.
 17. Do not overfill the fuel tank. If petrol is spilled do not attempt to start the engine but move the machine away from the area of the spill and wipe the machine dry with a rag. Do not attempt to start the machine till all petrol vapours have dissipated.
 18. Use only an approved container for storing fuel. Never store the fuel container or the fuelled machine in an unventilated area or near a source of ignition such as electrical switches or a gas hot water heater.
 19. Replace any unreadable warning or safety decals.
 20. The operator of this Chipper/Shredder should be in good physical and mental health and not under the influence of any drug or alcohol which might impair vision, co-ordination or judgement.
 21. Do not sell or lend this machine without the safety and operating instructions.
- ! Warning** - The blades on your Chipper/Shredder are very sharp and could cause lacerations if not handled with utmost care.
- ! Warning** - Allow the engine to come to a complete stop and remove the spark plug lead to avoid accidental starting before attempting any maintenance or inspection of the machine.
- Further safety instructions are contained in all sections of this book.

OPERATION

BEFORE STARTING

- Locate the shredder on stable, level ground other than paved or gravel surfaces.
- Remove the spark plug lead to prevent accidental starting then inspect that all fasteners are secure and safety guards are operating correctly. Also check the cutting blades are secure and in good condition. Replace the spark plug lead.
- Make sure that both feeding chambers are empty.
- Check engine oil level. Refer to ENGINE OIL on page 8 in this manual for the correct procedure.
- Operate the shredder only in good daylight.

TO START

The Greenfield Chipper/Shredder has a number of engine options. Select your engine from the list below and follow the instructions.

▪ Briggs & Stratton 60 Diamond I/C

Note: This engine is fitted with a fuel primer for starting.

1. Turn on the fuel tap.
2. Check that the spark plug lead is connected.
3. Set the throttle control to F "fast" position.
4. Push the primer bulb firmly 3 times.
5. Pull starting cord slowly until resistance is felt. Then pull cord rapidly to start the engine. Allow the starter cord to retract slowly to prevent damage to starter.
6. Shift throttle control to a fast idle position for 20 seconds to warm the engine.
7. When the engine is warm, move the throttle control to the F "fast" position to obtain best cutting performance.

▪ Briggs & Stratton I/C 8.5 HP

1. Turn on the fuel tap.
2. Check that the spark plug lead is connected.
3. For cold starting set the throttle control to the CHOKE position.
4. **FOR RECOIL START MODEL** Pull starting cord slowly until resistance is felt. Then pull cord rapidly to start engine. When engine starts allow the starter cord to retract slowly.

FOR ELECTRIC START MODEL Turn the starter key to the START position for ten (10) seconds maximum to avoid overheating the starter motor. If engine does not start it may be flooded. Set the throttle control half way then attempt to start again. Make sure to return the key to the RUN position after the engine starts.

5. Shift throttle control to a fast idle position for 20 seconds to warm the engine.
6. When the engine is warm, move the throttle control to the F "fast" position to obtain best cutting performance.

- **Honda GCV 160 5.5**

1. Turn on the fuel tap.
2. Check that the spark plug is connected.
3. For cold starting set the throttle control to the CHOKE position.
Note: Do not use choke if the engine is warm or the air temperature is high. Set control to F position.
4. Pull starting cord until resistance is felt, then pull cord briskly to start engine. Allow starter cord to retract slowly to prevent damage to starter.
5. Shift throttle control to a fast idle position for 20 seconds to warm the engine.
6. When the engine is warm, move the throttle control to F "fast" position to obtain best performance.

TO STOP

- Before switching off ensure that there is no material left in either the hopper or the chipper pipe and that the shredder chamber sounds completely cleared.
- Move the throttle control to idle or slow position for 20 seconds to allow engine temperatures to even out.

- **FOR RECOIL START ENGINES**

Move the throttle control to the STOP position.

- **FOR ELECTRIC START ENGINES**

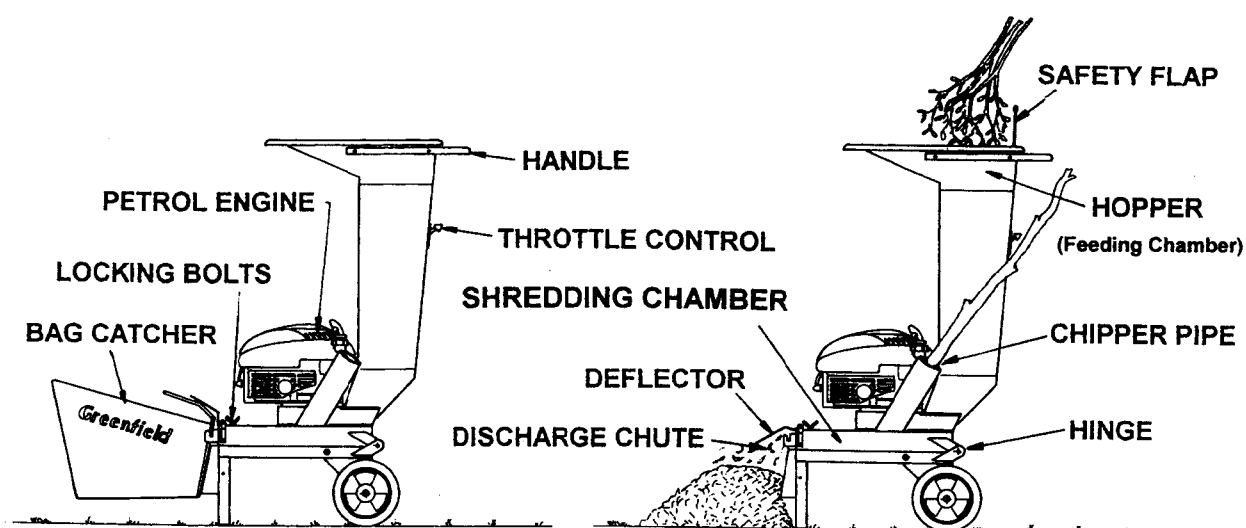
Turn the key switch to the STOP position.

- In an EMERGENCY situation the recoil start engines can be stopped quickly by shifting the throttle control directly to the STOP position and the electric start engine by turning the key to STOP.
- Turn fuel tap to the OFF position.
- Remove the starter key (if electric start).

TO OPERATE

- The operator should be wearing eye and hearing protection and heavy garden gloves.
- Never stand on the discharge side of the machine when operating and keep your face and body away from the entries to the feeder chamber.
- For maximum cutting efficiency from your Chipper/Shredder run the engine at full revs.
- Ensure there is no foreign matter in the material to be shred. Remove any stones, glass, metal, brick, wire or any other material foreign to garden mulch. Failure to do so could result in damage to the machine and possible personal injury.
- Never place any garden tool or any object not required to be shred in either feed chamber. Damage to the shredder will occur and possible personal injury.
- Do not allow processed material to accumulate at the discharge chute. The shredder will cease to process material and possibly stall the engine because of congestion in the shredding chamber. This situation could occur more often when using the catcher if the catcher is not regularly emptied.
- Stop the engine before removing or attaching the catcher.
- Your shredder will process green branches up to 20mm in the hopper. Larger branches should be fed into the chipper pipe. Refer to section "FOR BEST RESULTS" in this book on page 6.
- If the shredder vibrates or makes uncommon noises, stop the engine immediately. Wait for all the moving parts to come to a complete stop. Disconnect the spark plug lead to avoid accidental starting before inspecting the machine.
- Do not touch the engine when it is running or when surfaces are still hot from operating.

- If the shredder becomes clogged, switch off the engine and wait for all moving parts to stop, then remove the spark plug lead to prevent accidental starting before attempting to clear a blockage. Use a wooden stick only to clear a blockage, not hands or fingers. The blades on the shredder are very sharp and personal injury could occur if any body parts came in contact with the blades. Before restarting ensure both feeding chambers are empty.
- For an illustration and more information on opening the shredder chamber for inspection or to clear a blockage refer to TO INSPECT SHREDDER CHAMBER OR CLEAR A BLOCKAGE in this book on page 7.
- Precautions must be taken to prevent fuel leaking through the vented fuel tank cap when this machine is tipped onto its back for inspection or maintenance or when transporting. Refer to TO INSPECT SHREDDER CHAMBER in this book on page 7.



TRANSPORTING

If a Greenfield Shredder is to be transported laying down in a vehicle, precautions must be taken to prevent fuel leakage.

Before stopping the engine turn the fuel tap off and run the engine till it stops from lack of fuel.

Remove the spark plug lead.

To prevent fuel leaking through the vented fuel tank cap, either drain the remaining fuel from the tank, or if the tank is less than one third full remove the cap, place a piece of thin plastic wrap or bag approximately 15cm (6 inches) in size over the tank neck and replace the cap firmly.

Lay the shredder down on its back, resting on its wheels and handle.

Secure with straps to prevent movement and possible damage to the shredder and vehicle.

Before restarting, remove plastic seal from fuel tank.

Check engine oil level.

Replace spark plug lead.

FOR BEST RESULTS

- Garden prunings shred better when they are green. Dry material takes longer to process and causes excessive blade wear.
- Combine excessively green material with drier prunings and conversely dried prunings with green ones.
- Feed material in at a steady rate to maintain maximum engine speed. If engine slows, restrict feeding till maximum engine speed returns. If the engine continues to labour, stop the engine and refer to "TO CLEAR A BLOCKAGE" in this book.
- Your GREENFIELD shredder comes with a fabric catcher which is interchangeable with that of a GREENFIELD domestic mower. Empty the catcher just as you would your mower catcher. Don't allow it to overfill as this hinders the machines performance. Always stop the shredder to empty or replace the catcher.
- An extra large palm frond can produce more shredded mulch than the catcher can hold. Also when a large quantity of material is to be produced it may be more practical to remove the catcher and direct the mulch onto the ground or directly into the garden. Do not allow mulch to build up in the discharge area.
- Your GREENFIELD shredder will process green branches up to 20mm in the hopper and larger branches in the chipper pipe.
- Due to time absorbing preparation, slow processing and excessive blade wear, materials such as larger sections of old dried timber and the base section of palm fronts are best disposed of in another manner.
- Keep the blades sharp and the machine in top operating condition.
- Ensure there is no foreign matter in the material to be shred. Remove any stones, glass, metal, brick, wire or any other material foreign to garden mulch. Failure to do so could result in damage to the shredder and possible personal injury.
- Your GREENFIELD shredder comes with a wooden feed ram to assist the passage of branches through the chipper pipe.

It is not intended for use in the hopper. If material doesn't feed easily through the hopper we suggest reducing size of prunings and or the quantity till a sustainable feed rate is developed.

Never place any garden tool or any object not required to be shred in either feed chamber. Damage to the shredder will occur and possible personal injury.

- Read and understand the safety, operating and maintenance sections in this book.

TO INSPECT SHREDDING CHAMBER OR TO CLEAR A BLOCKAGE

If material fails to clear the shredding chamber or the machine is under abnormal labour or making uncommon noises or vibrating.

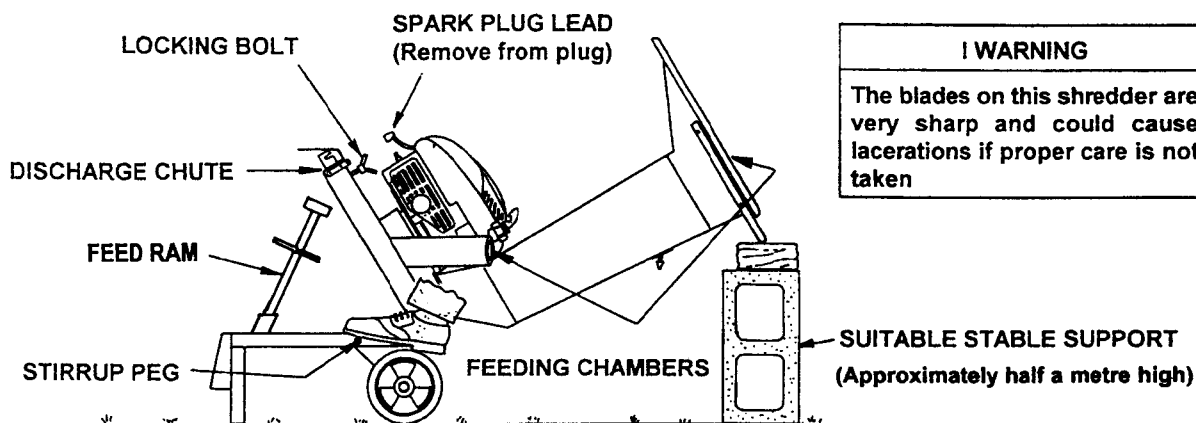
1. Stop the engine and wait for all moving parts to come to a complete stop.
2. **!WARNING** - Remove the spark plug lead to prevent accidental starting.
3. Open the shredding chamber by unscrewing both locking bolts then, with a foot on the stirrup peg, hinge the complete top of the shredder backwards and rest the handle on something sturdy approximately half a metre high. Before attempting any maintenance or inspection on the shredder use the feed ram as a safety prop by inserting it into the tube on the base to prevent accidental closure of the chamber. See illustration this page.

IMPORTANT. If the fuel tank is more than one third full precautions must be taken to prevent fuel leaking through the vented fuel tank cap while the shredder is hinged in the open position. Either drain the remaining fuel from the tank or remove the cap, place a piece of thin plastic wrap or bag approximately 15cm (6 inches) in size over the tank neck and replace the cap firmly. REMOVE the plastic seal from the fuel tank before restarting the engine.

4. Check for the build up of foreign material attached to the disc in the shredding chamber. Use only a wooden stick to remove material after a blockage, never hands or fingers.

! WARNING - The blades on the shredder are very sharp and could cause lacerations if proper care is not taken.

5. Remove all material out of both feed chambers before closing chamber.
6. Close the shredder chamber and screw in both locking bolts and replace the spark plug lead.
7. Remove the plastic seal (if fitted) from the tank cap and top up with clean regular unleaded petrol.
8. Restart the engine. If the shredder still vibrates or makes any uncommon sounds, stop the engine immediately and return the complete machine to your local dealer.



MAINTENANCE

! WARNING - Remove the spark plug lead to prevent accidental starting before attempting any maintenance or inspection of the machine.

FUEL

Before starting, top with clean regular unleaded petrol only. Do not overfill. Make sure the petrol is free from impurities, particularly water. If the machine is not to be used for an extended period, turn fuel tap off and run the engine till it stops from lack of fuel. Refer engine manufacturers booklet.

AIR FILTER

Inspect regularly. Replace if dirty or damaged. Never operate the shredder without the filter fitted or with the filter incorrectly fitted. Refer engine manufacturers booklet.

ENGINE OIL

Check engine oil level by positioning machine on level ground.

FOR BRIGGS & STRATTON ENGINES - Remove the dipstick and wipe clean. Replace the dipstick screwing correctly into position. Remove again and sight the oil level. Fill to the full mark, do not overfill.

FOR HONDA ENGINES - Remove the oil filler cap and wipe the dipstick clean. Replace the dipstick into the oil filler neck, but do not screw it in. Remove again and sight the oil level. If the level is low add the recommended oil to raise the oil level to the upper mark on the dipstick, do not overfill.

! CAUTION - Running the engine with insufficient oil can cause serious engine damage.

Change engine oil after the first 5 hours of operation then every 6 months or 25 working hours whichever comes first. Change more often in dusty conditions.

Drain engine oil whilst engine is warm and dispose of the used oil responsibly.

For Briggs & Stratton engines, replace with a high quality detergent oil classified for service SF, SG by the A.P.I. such as Briggs & Stratton "Warranty certified" SAE 30 oil, available from Briggs & Stratton service dealers.

For Honda engines, replace with a high detergent, premium quality motor oil certified to meet or exceed service classification SF, SG. SAE 10W 30 is recommended for general, all temperature use.

IMPORTANT

For precise oil specifications for your engine refer to the engine manufacturers booklet.

To drain engine oil from the Briggs & Stratton Diamond I/C 60 Engine

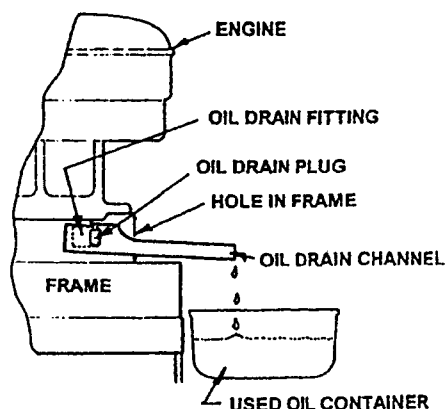
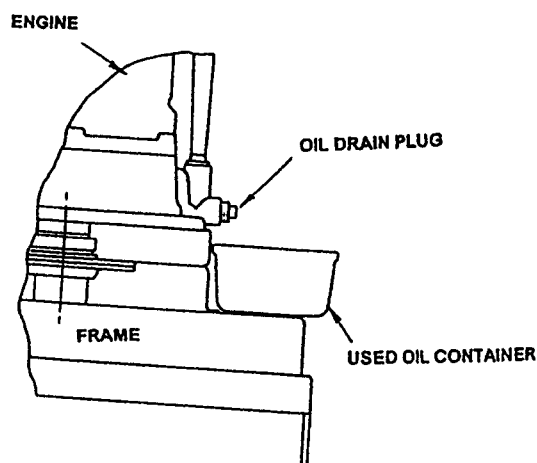
Push the drain channel provided through the hole in the frame and onto the oil drain fitting, then remove the drain plug using a standard 3/8" square drive socket extension piece. Catch the oil in a suitable container. See Illustration A.

To drain engine oil from the Briggs & Stratton I/C 8.5 HP engine

Slightly tilt the shredder towards the engine oil drain outlet. Remove the drain plug using a 7/16" or 12mm open end spanner. Catch the oil in a suitable container. See Illustration B.

To drain engine oil from the Honda GCV 160 engine

Turn the fuel tap to the "off" position. Remove the oil filler cap and drain the oil into a suitable container by inclining the engine towards the oil filler neck. For illustration, refer engine manufacturers booklet.

Illustration A**Illustration B****BLADES**

! WARNING - The blades on your Greenfield shredder are very sharp and could cause lacerations if not handled with utmost care.

Each blade has two cutting edges for twice the life. When the first edge of both blades becomes dull they can be turned over and used again before needing sharpening or replacement.

When blades do require sharpening return them to your local dealer who will arrange the cutting edges to be reground. Do not attempt to sharpen blades without the proper equipment needed to grind blades in pairs to retain correct balance.

When removing blades to turn over, be very careful as the unused edge is very sharp and could cause personal injury. Remove any build up of mulched material on the blade before turning it over and re-bolting it to the disc.

BATTERY

A 12 volt 17 amp hour SEALED lead acid battery, Greenfield Part No. GT 2267 is used on the Briggs & Stratton 8.5 HP electric start model. The 8.5 HP engine is equipped with a charging circuit and will continue to charge the battery as long as the engine is running. If externally charging, care is needed. Using a regulated battery charger TRICKLE CHARGE ONLY at no greater than 13.8 volts with a maximum initial charging current of 4.25 amps.

The battery should not be stored in a discharged state. For a long period of storage, fully charge the battery and keep it in a dry cool place and recharge at least every six months.

CLEANING

Never wash your Greenfield Shredder with a high pressure hose. Water and dirt could be forced past the seals in the bearings causing premature failure.

Use a brush to remove any build up of debris then wipe with a cloth. Do not hose engine. Clear grass from the finger guard on top of the engine, the engine head fins and around the muffler. For further engine cleaning instructions refer to the engine manufacturers booklet.

Clean the catcher bag by hosing.

STORING

Make sure all the material fed into the machine has completely passed through before shutting it off. Inspect feeding chambers and discharge chute, remove any debris.

Before storing clean the machine and check for any loose or missing parts. Check that the blades are in good condition for the next use.

Store in a dry, well ventilated area protected from excessive humidity and dust.

Do not store the shredder near any source of ignition such as electrical switches or gas hot water heaters. Turn the fuel valve to the "OFF" position.

FOR EXTENDED STORING PERIOD

- Turn the fuel tap off and run the engine till it stops from lack of fuel.
- Remove the spark plug lead to prevent accidental starting.
- Drain any fuel left in the tank so clean fuel can be added when the shredder is next used.
- If the shredder is fitted with a battery, keep the battery fully charged. Refer to BATTERY section in this book.
- For more information, refer engine manufacturers booklet.

TO REMOVE AND REPLACE BLADES

- 1 Disconnect the spark plug lead to prevent accidental starting.
- 2 Open the shredding chamber by unscrewing both locking bolts then, with a foot on a stirrup peg, hinge the complete top of the shredder backwards and rest the handle bars on something sturdy, approximately half a metre high. Before attempting any maintenance or inspection on the shredder use the feed ram as a safety prop by inserting it into the tube on the base to prevent accidental closure of the chamber. See illustration page 7.

IMPORTANT If the fuel tank is more than half full precautions must be taken to prevent fuel leaking through the vented fuel tank cap while the shredder is hinged in the open position. Either drain the remaining fuel from the tank or remove the cap, place a piece of thin plastic wrap or bag approximately 15cm (6 inches) in size over the tank neck and replace the cap firmly. REMOVE the plastic seal from the fuel tank before restarting the engine.

- 3 With the spark plug lead disconnected rotate the disc to bring a blade to the top discharge chute area. The blade securing bolts are easier to remove if the disc is first restrained from rotating by inserting a piece of timber through the blade hole at the bottom of the disc and into the hopper base hole.

Use a 13mm or 1/2" AF spanner or socket to remove the three (3) blade retaining bolts from the top blade only.

! WARNING - The unused edge of the blade will be very sharp and could cause lacerations if not handled carefully.

If the blade is to be turned over, remove any build up of mulched material on the blade with a wire brush or scraper before bolting that face to the disc. Failure to do so could cause the blade to come loose at a later time. The used spring washers should be discarded and replaced with new spring washers, every time the blade is removed. Tighten the M8 bolts to 22Nm (16ft.lbs.).

! WARNING - Ensure blades are not fitted upside down. See "Blade Assembly" illustration.

To change the second blade, repeat step 3 of these instructions.

Always replace blades in pairs to preserve balance. When replacing blades always use GENUINE GREENFIELD blades.

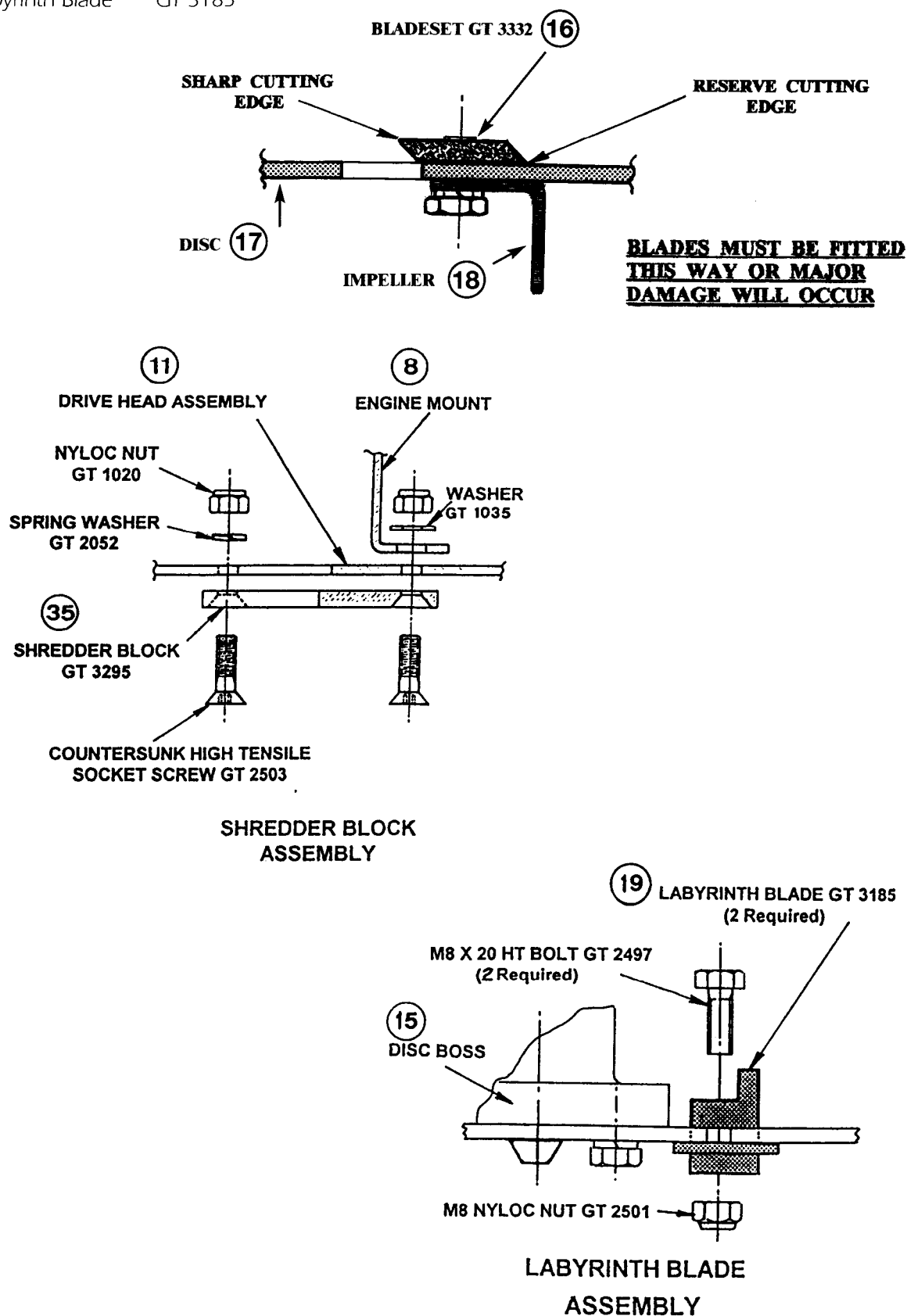
To remove or replace the blades it is not necessary to touch the bolts in the centre of the disc which secures the disc to the boss or the two bolts securing the labyrinth blades.

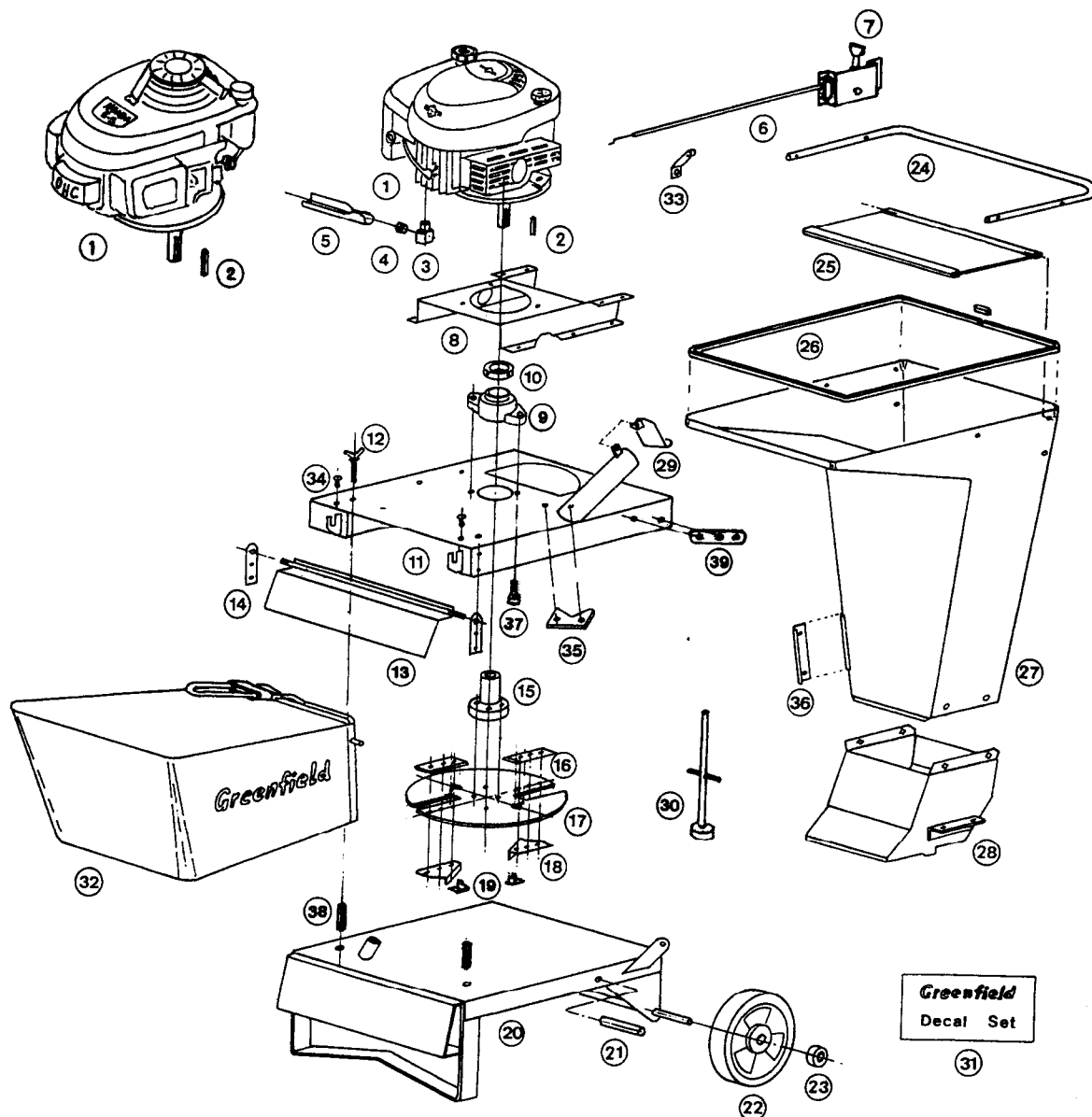
Do not attempt any maintenance or repairs to this shredder unless you have the correct tools and are competent to work on machinery of this nature.

! WARNING - Use of inferior non-genuine service parts on your Greenfield Shredder could result in costly damage and even personal injury. Insist on GENUINE Greenfield parts or the engine manufacturers spare parts.

Your part numbers are:

Blade Set	GT 3332
Spring Washer Set	GT 3334
Shredder Block	GT 3295
Labyrinth Blade	GT 3185





SPARE PARTS

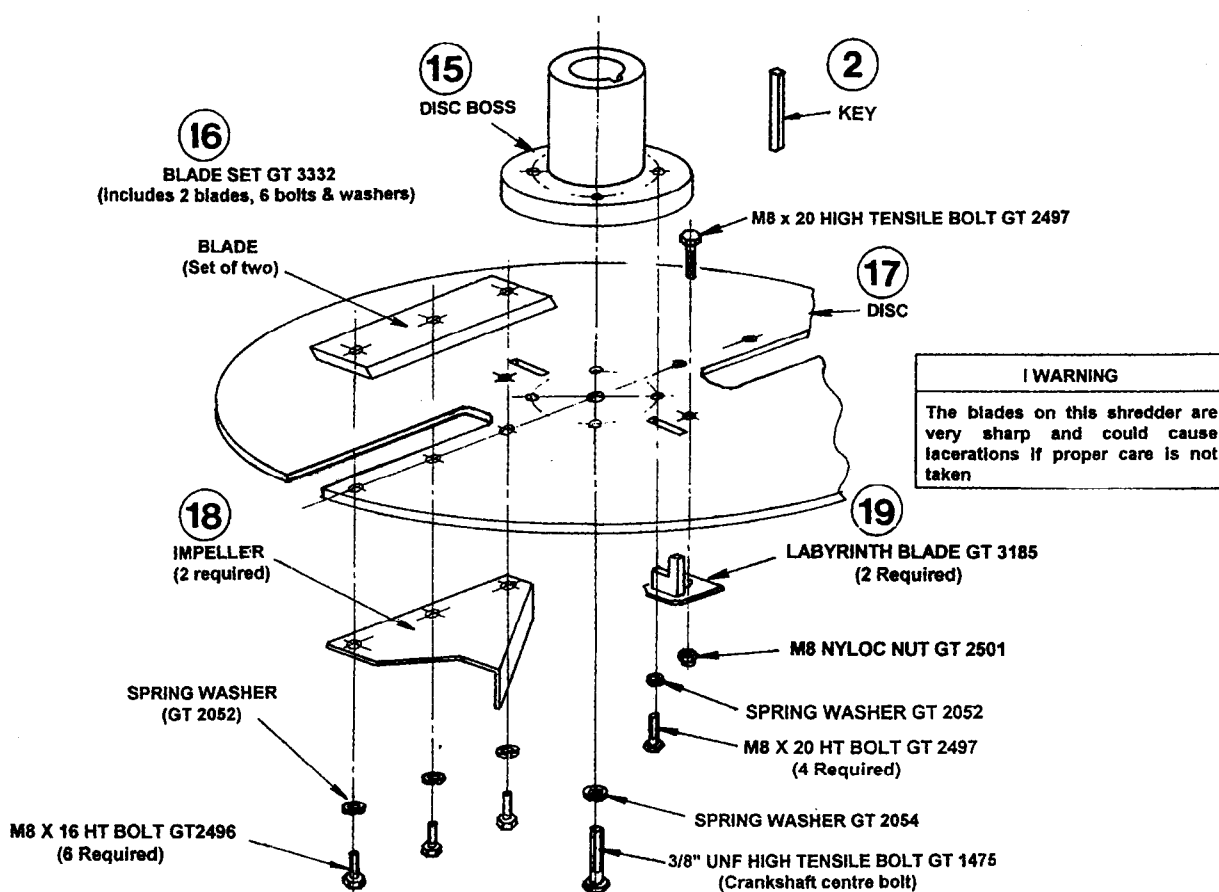
INDEX	PART NO.	DESCRIPTION	INDEX	PART NO.	DESCRIPTION
1	GD5796	Briggs & Stratton 60XTS I/C Diamond Engine	19	GT3185	Labyrinth Blade (2 required)
1	GD5782	Honda GCV 160 5.5 HP Engine	20	GT3274	Base Assembly
2	GT3291	Key Briggs & Stratton Engine	21	GT3322	Peg (2 required)
2	GT3194	Key Honda Engine	22	GT2255	Wheel (2 required)
3	GT2258	Oil Drain Elbow (B&S Only)	23	GT7009	Collar (2 required)
4	B&S 691680	Oil Drain Plug (B&S Only)	24	GT3289	Handle
5	GT3293	Oil Drain Channel (B&S Only)	25	GT3323	Rubber Safety Flap
6	GT3590	Throttle Control Briggs & Stratton Eng.	26	GT3284	Plastic Safety Edging
6	GT3591	Throttle Control Honda Engine	27	GT3339	Metal Hopper
7	GT2026	Knob - Throttle Control	28	GT3555	Hopper Base
8	GT3287	Engine Mount	29	GT3364	Metal Safety Flap
9	GT2260	Bearing Unit incl. Cam Lock Collar	30	GT3328	Wooden Feed Ram
10		Bearing Cam Lock Collar	31	GT3329	Decal Set
11	GT3315	Drive Head Assembly	32	GD5811	Fabric Chip Catcher
12	GT3387	Locking Bolt (2 required)	33	GT3393	Bracket - Throttle Cable - Briggs & Stratton Engine
13	GT3317	Deflector	33	GT14359	Bracket - Throttle Cable - Honda Engine
14	GT3318	Bracket (2 required)	34	GT1760	Nylon Button
15	GT3271	Disc Boss Briggs & Stratton Engine	35	GT3295	Shredder Block
15	GT3457	Disc Boss Honda Engine	36	GT3298	Smooth Edge
16	GT3332	Blade Set (2 blades, bolts & washers)	37	GT2498	Socket Head H.T. Cap Screw
17	GT3270	Disc	38	GT2505	Locking Socket
18	GT3273	Impellor (2 required)	39	GT3386	Hinge Arm

Parts and specifications subject to change without notice. Standard hardware items are not shown.

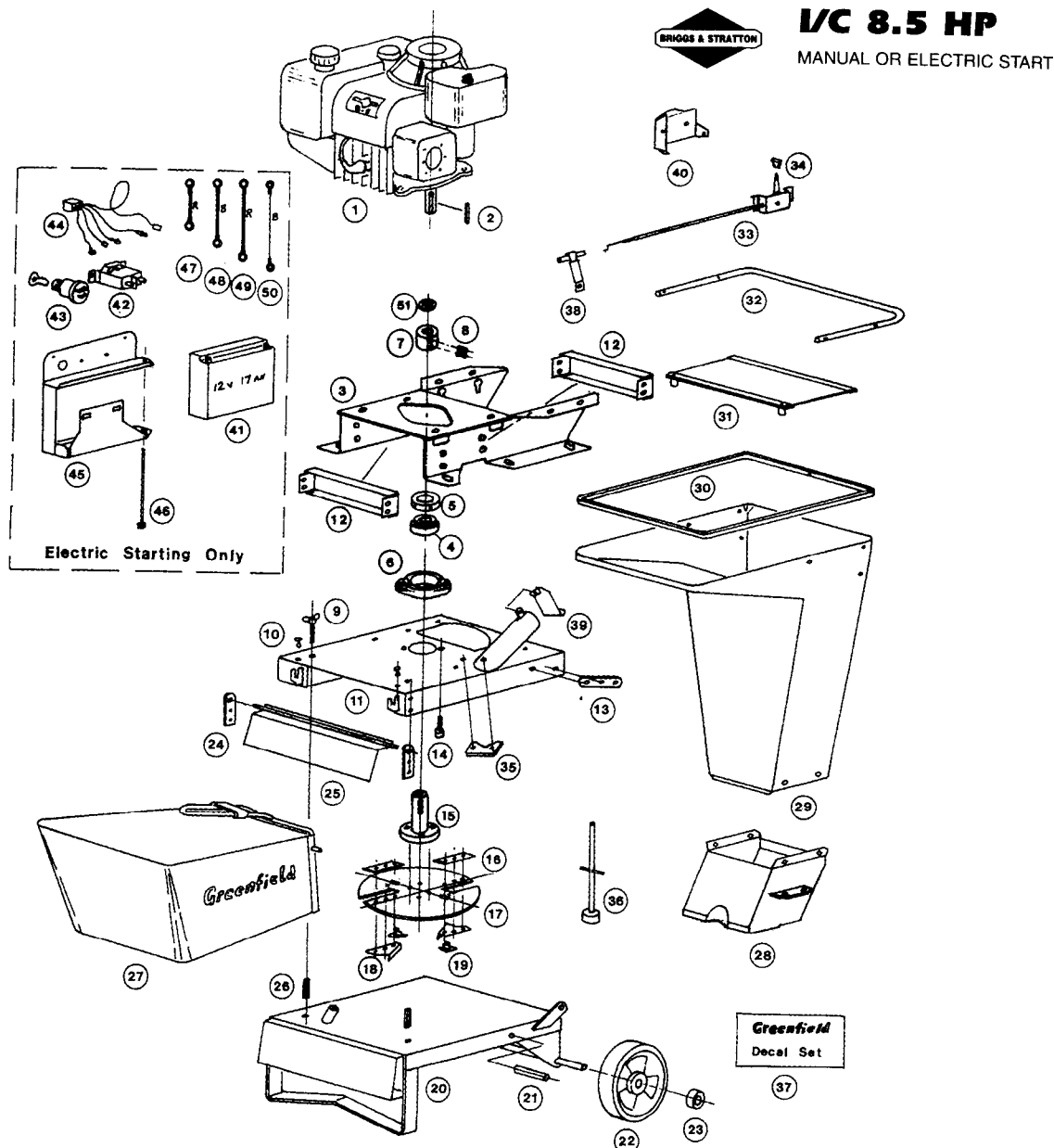
DISC ASSEMBLY AND SPARE PARTS FOR MODELS

Should it be necessary to remove the disc, new spring washers should be used when refitting. The 3/8" High Tensile centre bolt should be tensioned to 58 Nm (43 ft.lbs.) and the four (4) M8 x 20 High Tensile bolts into the disc boss should be tensioned to 22 Nm (16 ft.lbs.). See illustration "DISC ASSEMBLY".

The disc boss is keyed to the crankshaft internally and is captured in a self aligning cam lock bearing externally. There is a number of operations to be performed in the correct order for both removal and replacement of the engine, the bearing or the boss and should only be done by a person experienced and qualified with the correct tools to do so.



DISC ASSEMBLY



SPARE PARTS

INDEX	PART NO.	DESCRIPTION	INDEX	PART NO.	DESCRIPTION
1	GT1919	8.5HP B&S Engine – Manual Start	26	GT2505	Locking Socket
1	GT1918	8.5HP B&S Engine – Electric Start	27	GD5811	Catcher Bag
2	GT3128	Key	28	GT3484	Hopper Base
3	GT3474	Engine Mount Assembly	29	GT3339	Hopper
4	GT2256	33mm Ball Bearing Complete with Camlock Collar	30	GT3284	Rubber Edging
5		With Bearing	31	GT3323	Rubber Safety Flap
6	GT2257	Bearing Housing	32	GT3289	Handle
7	GT3570	Collar	33	GT3591	Throttle Control
8	GT2520	Set Screw (2 required)	34	GT2026	Knob – Throttle Control
9	GT3387	Locking Bolt (2 required)	35	GT3295	Shredder Block
10	GT1760	Nylon Button	36	GT3328	Wooden Feed Ram
11	GT3454	Drive Head Assembly	37	GT3329	Decal Set
12	GT3475	Stiffener – Engine Mount	38	GT14359	Bracket – Throttle Cable
13	GT3386	Hinge Arm	39	GT3233	Metal Safety Flap
14	GT2498	HT Cap Screws (2 required)	40	GT3592	Guard Engine Speed Control
15	GT3129	Disc Boss	41	GT2267	Battery 12V 17AH Sealed
16	GT3332	Blade Set (2 Blades, Bolts & Washers)	42	GT2220	Starter Solenoid
17	GT3558	Disc Unit	43	GT2219	Off-On-Start Key Switch
18	GT3273	Impeller (2 required)	44	GT4274	Wiring Harness – Key Switch
19	GT3185	Labyrinth Blade (2 required)	45	GT3487	Battery Support Tray
20	GT3274	Base Assembly	46	GT3429	Battery Clamp Road
21	GT3322	Peg (2 required)	47	GT3197	Red Cable Battery (+) to Solenoid
22	GT2255	Wheel (2 required)	48	GT3199	Black Cable Battery (-) to Solenoid
23	GT7009	Collar (2 required)	49	GT14364	Red Cable Solenoid to Starter Motor
24	GT3318	Bracket	50	GT3198	Black Wire
25	GT3317	Deflector	51	GT3134	High Tensile Washer

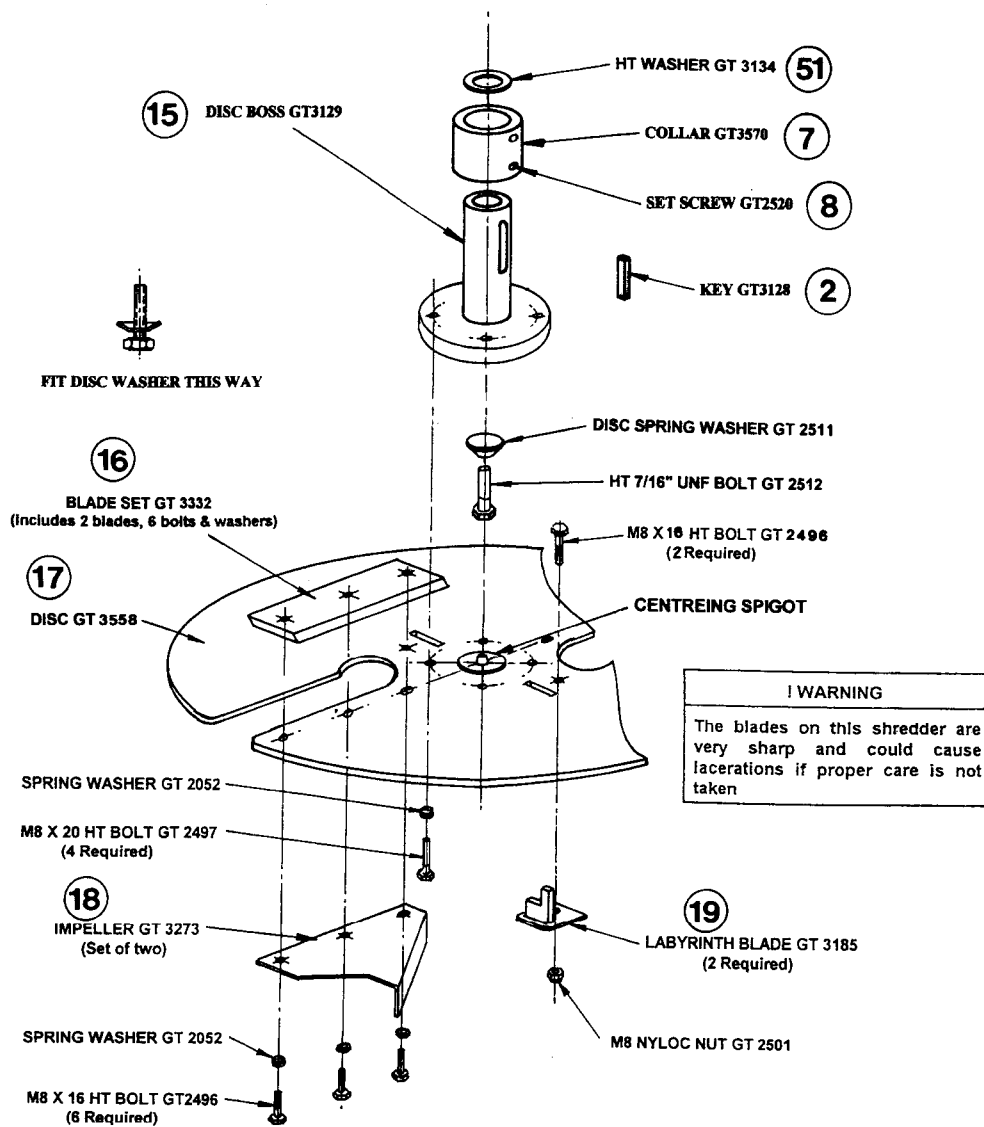
Parts and specifications subject to change without notice. Standard hardware items are not shown.

DISC ASSEMBLY AND SPARE PARTS FOR MODELS

Should it be necessary to remove the disc, remove the four (4) M8 high tensile bolts GT 2497 securing the disc to the disc boss. New spring washers should be used when refitting the disc. Tension the M8 high tensile bolts to 22 Nm (16ft. lbs).

The disc boss is keyed to the crankshaft internally and is captured in a self aligning cam lock bearing externally. The boss is secured to the crankshaft with a 7/16 UNF High Tensile bolt GT 2512 tensioned to 68 Nm (50ft.lbs). **A new disc spring washer should be used when refitting.**

There is a number of operations to be performed in the correct order for both the removal and replacement of the engine, the bearing or the disc boss and should only be done by a person experienced and qualified with the correct tools to do so.



DISC ASSEMBLY

GUARANTEE

Greenfield Mowers Pty Ltd, the manufacturer, guarantee their product to be free of faulty workmanship and material only. This period is 12 months for domestic use. The piecemaker Chipper Shredder is built solely for domestic use. Machines hired out are not covered by the manufacturer's guarantee. The manufacturer cannot accept any claim for damage that may occur due to irresponsible use or abuse by the hirers. Engines and batteries used on Greenfield equipment carry the respective manufacturer's warranty.

This guarantee will not apply to:

- Fair wear and tear, Blades and blade Bolts, Blade Holder, and damage caused by misuse, neglect and accidents.
- Repairs rendered necessary or arising from use of other than genuine Greenfield parts, or the relevant genuine manufacturer's parts.
- Any work performed by other than an authorised Greenfield Dealer, or damages arising from parts that have been dismantled, modified or incorrectly fitted.

Products and parts considered faulty should be returned intact to an authorised greenfield dealer, or direct to Greenfield with all necessary information, freight paid for inspection. In all warranty claims the manufacturer's decision is final and binding.

The benefits conferred by the above guarantee are in addition to all other rights and remedies in respect of the product which the manufacturer reserves the right to change parts and specifications without notice.

Guarantee Registration Details

Owner _____

Address _____

_____ Postcode _____

Purchase Date ____ / ____ / ____ Model _____

Chassis No. _____ Engine No. _____

Dealer Name _____

Dealer Signature _____

Please complete this record which should be held by the purchaser and presented should service under guarantee be required. To register your guarantee please complete the enclosed guarantee card and return to Greenfield Mowers.

Greenfield
Mowers Pty Ltd

172 Ingram Rd, Acacia Ridge, Qld. Australia 4110.

PO Box 155 Archerfield QLD 4108

Fax (07) 3344 1161. Phone (07) 3345 6100

Web Site: <http://www.greenfield.com.au> - Email: greenfld@gil.com.au