



Greenfield

Owners Manual

Instructions & OE Parts Listings

Model GT22670
17.5/32 Standard

Model GT22690
17.5/32 Steel Deck

Model GT22875
25/32 Standard

Model GT22875SD
25/32 Steel Deck

Model GT22895
17.5/34 Deluxe

Model GT22900
25/34 V-Twin Deluxe

Model GT22885
25/42 V-Twin Deluxe



Greenfield Mowers Pty Ltd
123 Boundary Rd, Rocklea. QLD 4106
Ph: (07) 3875 9400
F: (07) 3875 9425
E: info@greenfield.com.au
www.greenfield.com.au

FASTCUT



Contents

Safety instructions	3
Operating Instructions	6
Mowing on Slopes	8
Differential Instructions	9
General Maintenance	10
Brake System	12
Cutting System	13
Drive System	16
Steering Adjustment	17
Chain Adjustment	18
Electrical Circuits	19
Spare Parts	20
Idler Pulleys - Drive Belt	
Linkages - Cutter Clutch and Drive Clutch	
Linkages - Brakes, Cutter Height and Notch Bar	
Engine and Electrics	
Drive Clutch and rear Axle	
Steering and Front Axle	
Cutter Deck - 32" and 34"	
Cutter deck - 42"	
Body Work and Seat	
Warranty	30

FASTCUT Series

Thank you for purchasing an Australian made Greenfield FastCut ride-on mower. Please ensure to follow the manufacturer's safety, operating, and maintenance instructions for many years of trouble free operation and service.

Before operating the mower, read the owner's manual carefully. Your Greenfield has been designed to meet stringent safety standards - but we remind you that a mower is a cutting device - **used incorrectly, it may cause personal injury or death. Remove the key from the machine when not in use.** Do not allow children or any person unfamiliar with the safe operating procedure to operate this mower.

Safety Instructions

1. Testing the seat safety switch.

Action: Park machine safely, sit on seat, apply park brake, set cutter engagement switch to off, start engine, switch cutter blades on, raise body off seat but do not get off mower.

Result: Engine will begin to stop. Allow engine to fully stop. If the engine does not stop, there is a fault with the seat safety switch. Do not attempt to use mower until the seat safety switch has been inspected and repaired by an authorized Greenfield dealer.

2. Do not carry passengers.
3. Know the controls. Read the operating instructions carefully. Learn how to stop the mower and engine quickly in an emergency.
4. Do not mow whilst bystanders, especially children or pets, are in the mowing area. Children should be kept safely supervised. Never assume that children will remain outside of the cutting area. Do not reverse before looking behind.
5. Ensure that the area to be mowed is clear of sticks, stones, bottles, bones, wire, and other debris that could be thrown by the blades.
6. Do not operate the machine without first inspecting the blades, blade bolts, and blade holder for wear or damage. **Damaged blades or bolts are hazardous.** Always replace blades and blade bolts in sets to preserve balance.

Replace worn or damaged parts with **genuine Greenfield** replacement parts only. Use of inferior, non-genuine service parts could result in damage or personal injury. *Refer Maintenance Instructions pg. 10 for part numbers and fitting instructions.*

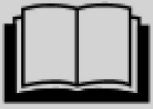
7. Before using, check that the grass catcher (if installed), safety switches, and guards provided by the manufacturer are operating properly and are fitted securely. Regularly check all components on the mower to ensure the machine is in a safe operating condition.
8. Never mow while barefoot or wearing sandals or thongs. Wear long trousers and heavy shoes. It is also important to wear suitable hearing and eye protection.
9. A mower operator should be in good physical and mental health and not under the influence of any drug, alcohol, or any other substance that could impair vision, coordination, or judgment.
10. Replace worn or faulty exhaust mufflers.
11. Do not allow grass, garden debris, or grease to build up on the mower, particularly around the engine. This could be a fire hazard.
12. Always refuel outdoors away from any flame sources. Do not smoke whilst refueling the engine, or fuel near a source of ignition, such as electrical switches or a gas hot water heater. Never remove the cap from the fuel tank or add petrol whilst the engine is running or if the engine is hot, always allow to cool. Remove fuel cap slowly to relieve any tank pressure. Do not overfill the fuel tank. If petrol is spilled, do not attempt to start the engine, move the machine away from the spill area and wipe the machine dry with a clean rag. Do not attempt to start the machine until all petrol and vapours have dissipated.

13. Use only an approved container for storing fuel. Never store fuel or the fueled machine in an unventilated area or near a source of ignition such as electrical switches or a gas hot water heater.
14. Do not run the engine in a confined space where carbon monoxide and poisonous exhaust fumes can collect. Carbon monoxide is a colourless, odourless, deadly poisonous gas.
15. Always disengage the cutting blades before starting or stopping the engine.
16. Always mount or dismount the mower from the opposite side to the discharge chute. Always stop the engine before dismounting. Keep hands and feet clear of the cutter deck.
17. Reduce speed, particularly when making sharp turns, to prevent overturning or loss of control. Do not stop or start suddenly when mowing up or down hill. The differential action must be locked out when operating on any slope to improve traction, braking, and safety.
18. Never mow up or down hill on slopes which exceed 10°, or mow across the face of a slope which exceeds 5°. Before attempting to mow on any slope, refer to *Mowing on Slopes pg.8*.
19. Stay alert for holes in the terrain and other hidden hazards.
20. Before crossing paths, driveways, or any other area foreign to mowers, reduce engine speed, disengage the cutting blades, and lift the cutting attachment to maximum height. Do not drive over obstacles or gutters, this machine has a maximum clearance of 3.5" or 9cm.
21. Watch out for traffic when crossing or operating the mower near roadways. Always mow with the safety grass deflector properly fitted.
22. When mowing, never direct discharge of material toward bystanders, nor allow anyone near the machine while in operation.
23. Before leaving the operator's position:
 - (a) Disengage the cutting blades.
 - (b) Apply the parking brake.
 - (c) Stop the engine and remove the starter key.
24. Disengage the drive to the cutting blades and stop engine:
 - (a) Before refueling.
 - (b) Before removing the grass catcher or any attachment.
 - (c) Before making a height adjustment, unless adjustment is being made from the operator's position.
 - (d) Before clearing blockages.
 - (e) Before inspecting, cleaning, or working on the mower.
 - (f) After striking a foreign object (inspect the mower for damage and make necessary repairs before restarting and operating the machine).
 - (g) If the machine starts to vibrate abnormally (check immediately).
25. Disengage the drive to the cutting blades when not in use or if transporting.
26. Do not over-speed the engine or alter the governor settings. Excessive speed is dangerous and shortens engine life.
27. Use care when pulling loads or using attachments:
 - (a) Use only the approved draw-bar hitch point.
 - (b) Limit loads to those you can safely control.
 - (c) Do not turn sharply. Use care when backing up.
28. Replace any unreadable warning or safety decals.
29. Do not lend or sell the mower without the owner's manual.
30. **Warning** - Remove the spark plug lead to avoid accidental starting before attempting any maintenance or inspection of the mower.

Safety Instructions

The following images depict and describe safety symbols that may appear on this product. Please read, understand, and follow all of the safety instructions before attempting to assemble or operate this product.

SYMBOL



Read The Operator's Manual(s) - Read, understand, and follow all instructions noted in the manual(s) before attempting to operate.



Warning - Never carry passengers. Never carry children, even with the blades off.



Operator Awareness - Always look down and behind before and while backing to avoid a back-over accident.



Warning (Rotating Blades) - Do not place hands or feet near rotating parts or under the cutting deck. Contact with the blade(s) can cause serious personal injury.



Warning - Remove spark plug lead and ignition key. Read instructions before servicing or performing maintenance.



Bystanders - Keep bystanders, helpers, children, and pets at least 25 metres from the machine while it is in operation with a compliant safety deflector.

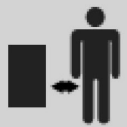
MAX 10°



Warning (Slope Operation) - Do not operate this machine up or down a slope greater than 10° or 5° across.



Warning (Hot Surface) - Engine parts, especially the muffler, become extremely hot during operation. Allow engine and muffler to cool before touching.



Warning - Keep bystanders at a safe distance from the machine.



Warning - Turn off engine and remove ignition key before refueling the machine.



Caution - Avoid injury! Engine exhaust fumes contain carbon monoxide and can cause serious illness or death.



Caution - Do not run an engine in an enclosed area such as a garage, even with the doors and windows open.

Operating Instructions

Before Starting - Please Do Not Proceed Before Reading Safety Instructions.

Fuel

Top with clean, regular **unleaded** petrol only. **Do Not Overfill.** Do not fill above the high level mark on the tank. Make sure that the petrol is free from impurities, particularly water. The petrol tank is located inside the engine compartment. Raise the bonnet for access. Before removing the filler cap from the fuel tank to refuel the machine, wipe or brush the area clean to prevent any dirt or debris from accidentally falling into the tank when the cap is removed. Do not use stale petrol in your mower - add clean, fresh fuel only.

Engine oil

Check oil level by positioning the mower on level ground. Wipe or brush the area clean around the oil filler/ dipstick cap, remove the dipstick and wipe clean, replace the dipstick - screwing carefully into position. Remove again and sight the oil level. Fill to the full mark. Do not overfill. The dipstick must be firmly in place when the engine is running. *Refer to Crankcase Lubrication pg.10 for oil recommendations.*

Tyres

Inflate to the correct pressure, 20 to 22 psi (140 to 154 KPa) in the front tyres and 12 to 15 psi (84 to 105 KPa) in the rear tyres. Do not over inflate. Over inflation will change the shape of the tyre, adversely affecting the cutter trim and tilt, and may also cause permanent tyre damage, resulting in tyre rupture and possible accident.

Cutting Height

The cutting height adjustment lever is located in the rear cover to the front of the operator. To alter the cutting height, move the lever to the right then shift upward or downward to select the setting, then release to lock in position. An indicator panel displays the setting. Use the height setting in the green band for maximum belt life.

Blade Clutch

The blade clutch switch is located on the right hand side of the dash panel. To **ENGAGE** the cutter blades, pull the switch up. To **DISENGAGE** the cutter blades, push the switch down.

DANGER:

- **When cutter clutch is engaged, high-speed blades are rotating.**
- **Never use the mower without the safety deflector or grass catcher fitted.**
- **Never attempt to dismount from the driver's seat while engine is running.**

Seat

The operator's seat is adjustable front to rear. To adjust, push the lever on the left hand side of the seat to the left and slide the seat forward or backward until a safe and comfortable seating position is obtained, then release the lever to the locked position. Oil the slides occasionally. The seat is fitted with a safety switch. *See Testing Procedure pg.3.*

To Start The Engine

Apply the park brake, disengage the blade clutch (cutters out). Turn on fuel tap (if fitted). For cold starting, the choke will need to be activated. On single cylinder models, move the throttle control lever up and into the **CHOKE** position. On twin cylinder models fitted with a separate choke control, move the throttle control to the **FAST** position and pull out and hold the choke control in the choke position. Turn the starter key to the start position for a maximum of ten (10) seconds, to avoid overheating the starter motor. If the engine does not start, it may be flooded. Set the throttle control half way and try again.

Make sure to return the key to the **RUN** position after the engine starts or each time you attempt to start it. Once the engine is running, move the throttle control to the **FAST** position on single cylinder models to turn off the **CHOKE**. On twin cylinder models with separate choke control, push the **CHOKE** in fully for correct engine operation.

Important - This Greenfield mower is fitted with a safety 'Cut-Out' switch, activated by the seat. The operator must be seated to start the engine and remain seated while operating the mower. If the operator does not remain seated, the engine will stop. This safety switch must be kept functioning for your protection. Adjustment is easily done when necessary.

To Stop The Engine

In an emergency situation, turn the key to the STOP position.

For a normal stop, reduce the engine speed to idle on the throttle control, disengage the cutter blades.

Apply the park brake and allow the engine temperature to even out by idling for approximately twenty (20) seconds. Turn the key to the STOP position.

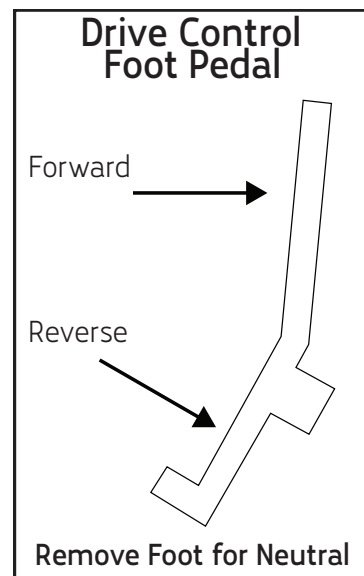
Note: Some manufacturers require their engines be stopped in a different manner i.e. Briggs & Stratton recommends that their single cylinder engines be shut down at full revs. *Please refer to the engine manufacturers book supplied with this machine for their recommended engine stopping procedure.*

Only after the mower, the engine, and all mechanical functions of the mower have completely stopped should the driver dismount from the driver's seat.

Remove the key and store out of reach of children. This will also ensure that the hour meter will not continue to run and that power to the electric fuel solenoid valve on the carburettor is shut off.

To Operate

A simple pivoted multi-purpose foot pedal operated by the driver's right foot controls forward, neutral, and reverse. Apply toe pressure to move forward, heel pressure to move in reverse. Increased toe or heel pressure provides speed variation in forward or reverse respectively. Allow pedal to centralize for neutral. The manufacturer also recommends this multi-purpose pedal be used as the principle method of braking when operating this mower. On level ground or moving forward downhill, the mower can be slowed or stopped by applying toe or heel pressure opposite to the directional movement of the mower. When moving forward up hill, regulating the forward pressure will stop or slow the mower. Sudden or violent directional changes and/ or wheel spinning must be avoided. *For a detailed explanation of the braking systems on this Greenfield FastCut mower, see the section on Braking Systems pg.12.*



Safe Operating Hint

Recommended method to proceed down slopes:

Before driving down a slope, shift the throttle control to select slow engine revs.

Using toe pressure, keep the multi-purpose foot pedal engaged in the FORWARD drive position while driving down the slope. This will limit the forward speed of the mower to the preselected engine speed. To further adjust the ground speed to suit the conditions, use the throttle control to raise or lower the engine revs while still retaining the necessary toe pressure on the foot pedal to keep forward drive engaged. This practice eliminates unnecessary wear and tear on clutches, transmissions, and tyres caused when reverse is used to slow the forward progress of the mower on slopes. This practice also ensures that the operator retains better control of the machine as engaging reverse in certain circumstances, such as wet grass, could cause the wheels to skid, which may result in loss of control. Reverse or heel pressure will be needed to stop the mower.

IMPORTANT: Never drive a ride-on mower up or down a slope exceeding 10° or across a slope exceeding 5°.

Mowing on Slopes

Exercise extreme caution when operating a ride-on mower on a slope. Slopes are a major cause of tip-over and loss of control accidents involving ride-on mowers. Severe injury or death can occur.

On any slope, the differential action must be locked out for best traction and braking i.e. both rear wheels driving.

Speed should be reduced on slopes, particularly when changing direction.

Do not stop or start on slopes or make sudden speed or directional changes unless entirely necessary.

Never operate a ride-on mower on any slope if it is wet. Any grass in good condition on slopes can cause your ride-on mower to slide and cause the brakes to have little or no effect.

A ride-on mower should only be operated up and down slopes, not across.

Before operating on a slope, remove all loose matter, branches, rocks, etc. and stay clear of holes, erosion, tree roots, etc. Such hazards can cause unexpected and instantaneous stability changes.

If a totally safe mowing procedure cannot be planned before entering a sloped area, then an alternative method of cutting the area which does not risk the safety of the operator should be used.

Never tow or use any optional attachment on ANY slope.

Do not mow close to steep drop offs.

Maximum Slopes



Never mow up or down hill on slopes which exceed 10°.



Never mow across the face of a slope which exceeds 5°.

If the operator of a ride-on mower is not absolutely certain that a slope does not exceed the previous recommendations, the area should not be entered until such time as a properly qualified person has assessed and reported on the safety of the area.

Greenfield Differential

Some Greenfield FastCut models feature a unique and patented differential. This differential offers the operator the option of the full differential action of the rear wheels for improved steering and a tight turning circle, whilst eliminating rear wheel scuffing on fine lawns. Most people will operate their Greenfield mower with the differential operating at all times. This is the preferred method of operation and is accomplished by keeping the handle hooked over the end of the rear axle. *See illustration below.*

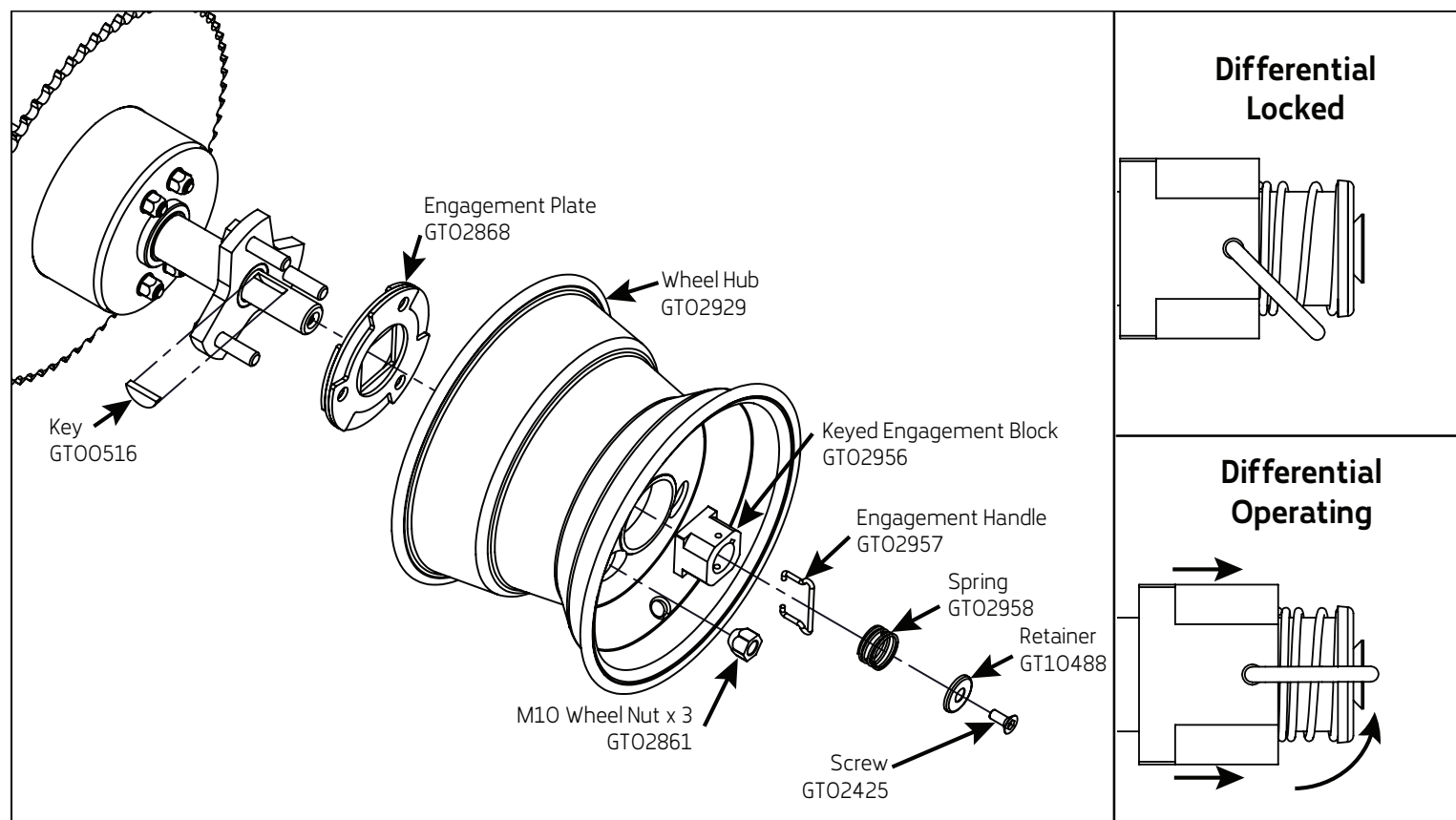
IMPORTANT: Do not attempt to engage or disengage the differential lock from the operator's seat while the engine is running.

In situations such as wet areas, uneven terrain, slippery surfaces, and particularly when working on any slope, you must lock out the differential action i.e. both rear wheels driving for improved traction and braking. This differential must also be locked out when using any attachment such as a dozer blade or when towing. Locking the differential is accomplished by releasing the handle from the end of the rear axle. *See B Below.* Slight movement of the mower with the front wheels, other than straight ahead, may be required to engage the locking mechanism.

To return the differential to the operating position, *see illustration below*, turn the steering wheel either to the left or right. Rock the mower back and forth while simultaneously pulling out the engagement handle and locating it over the end of the axle. Lubricate if necessary.

If the left side rear wheel is removed, make sure that the keyed engagement block slides freely into the square section of the engagement plate before final tightening of the wheel nuts.

Greenfield differentials are fully lubricated and sealed for life at the factory. If in the unlikely event that your differential needs service, it must be returned to Greenfield intact. Differentials that have been tampered with or dismantled will **NOT** be considered for warranty. Normal warranty is twenty four (24) months for private use and three (3) months for commercial use. Extended warranty is available for up to five (5) years for private use if the servicing conditions are maintained. See your Greenfield dealer for details. During the warranty period, service and spares for differentials are only available through the factory.



Maintenance

Warning: Remove the spark plug lead to avoid accidental starting **BEFORE** attempting any maintenance or inspection of the mower.

Crankcase Lubrication

Change the engine oil after the first five (5) hours of operation, then every six (6) months or twenty five (25) working hours, whichever comes first. Change more often in heavy work or dusty conditions. Drain the engine oil whilst the engine is warm then replace. Refer to the engine manufacturer's book supplied with this machine for specific grade required for this engine. Briggs & Stratton recommends Warranty Certified SAE 30 oil, available from Briggs & Stratton service dealers.

Fill to the full mark indicated on the dipstick. Do not overfill. Check oil level by positioning the mower on level ground. Wipe or brush the area clean around the oil fill/ dipstick cap, remove the dipstick and wipe clean, replace the dipstick - screwing carefully into position. Remove again and sight the oil level. Fill to the full mark. Do not overfill. The dipstick must be firmly in place when the engine is running.

Air Filter

Service the air filter as per the engine manufacturer's booklet. Clean or replace more often in dusty conditions. Never operate the engine without the filter correctly and securely fitted - rapid and expensive wear to the engine will occur.

Cooling System

Remove the blower housing and clean out the grass and debris to prevent engine overheating. *Refer to the engine manufacturers booklet.*

Battery

A maintenance free battery is fitted to your machine.

Note: If the mower is not used for at least five (5) hours a month, the battery will discharge and could sustain permanent damage. Do not allow the battery to discharge. Regularly trickle charge the battery with a current not exceeding three (3) amps per hour for three (3) to four (4) hours to prolong the battery life. Keep the outside of the battery, especially the terminals, clean and dry and check the battery is held securely.

The maintenance of the battery is the customer's responsibility, only faulty batteries are covered by the battery manufacturer's warranty. Neglect is not covered.

Wheels

The rear wheel nuts should be re-tensioned after the first five (5) hours of operation to 44Nm (33 ft lbs), then regularly with your preventative maintenance checks. Before re-tensioning the L.H rear nuts on models fitted with differentials, make sure that the key engagement block slides freely into the engagement plate.

Tyres

Inflate to the correct pressure, 20 to 22 psi (140 to 154 KPa), in the front and 12 to 15 psi (84 to 105 KPa) in the rear. Do not over inflate.

Cutter Deck

Regularly check the condition of the cutter blades and blade bolts, cutter disc, V belt and pulleys, and cutter brake. *Refer to specific sections of the manual for further details regarding blades, V belts, etc.*

Cleaning

Never wash your Greenfield mower with a high pressure wash gun. Water and dirt could be blasted past the seals in the bearings, causing premature bearing failures and rusted pivot points.

- Never wash your Greenfield mower immediately after use. The quenching contraction effect from hosing the machine while at operating temperature could also draw water and dirt into the bearings and cause premature bearing failures.
- The best way to clean your Greenfield is to use an air hose to blow loose grass, etc. from around pulleys, belts, and the top of the cutter deck. Wash the exterior with a sponge and bucket, then rinse off with a hose and wipe it down the same way as you would a car. For maximum machine life, do not spray water directly on the pulleys and bearings.
- Allow your Greenfield to cool after use, then clean off all grass and other debris before storing. Sticks, stones, or an accumulation of grass and other debris will damage belts and fracture pulleys if they go between the pulley and belt. When operating in these conditions, the cutter deck may require more frequent cleaning.

Chassis Lubrication

Your Greenfield mower has three (3) greasing points. A grease nipple is fitted to each king pin housing in the front axle beam, the third grease nipple is fitted to the steering idler which is located on the centre of the machine close behind the front axle beam and accessible from under the chassis. Grease these locations every fifty (50) hours with a quality No. 2 lithium base grease or equivalent. It is recommended that your grease gun be fitted with a flexible hose for easier access. All other exposed pivot joints, lever points, and slides are to be lubricated with engine oil.

Belts

V belts on Greenfield mowers are self adjusting, although the cutter belt may occasionally require an extra manual adjustment within its working life. *See pg.20.* Inspect the V belt regularly and replace if damaged. Part numbers for V belts are:

32" and 34" Drive V Belt - GT02369
32" and 34" Cutter V Belt - GT02365

42" Drive V Belt - GT12004
42" Cutter V Belt - GT02627

IMPORTANT: To prolong service life, use only **genuine Greenfield** branded V belts, refuse substitutes, non genuine V belts may render the clutch ineffective, even dangerous.

Cutter Blades

Check condition of blades, blade bolts, and blade holder. Replace if damaged or worn. Damaged or worn blades and bolts are a serious hazard. Always replace damaged or worn blades and bolts in sets to preserve balance. Use only **genuine Greenfield** branded replacement parts. Use of inferior non genuine replacement parts on your Greenfield mower could result in costly damage or personal injury. Part numbers for blade and bolt sets are:

32" and 34" Cutter Blade and Bolt Set - GT02139
42" Cutter Blade - GT02632

Illustration A shows fitting procedure for cutting blades. Tighten the blade bolt nuts firmly. Use a 17mm ring spanner. The correct torque is 44Nm (32ft lbs). The blades must be free to move but not loose. Lightly oil the blade pivot point before fitting.

Warning: Always remove the spark plug lead to avoid accidental starting.

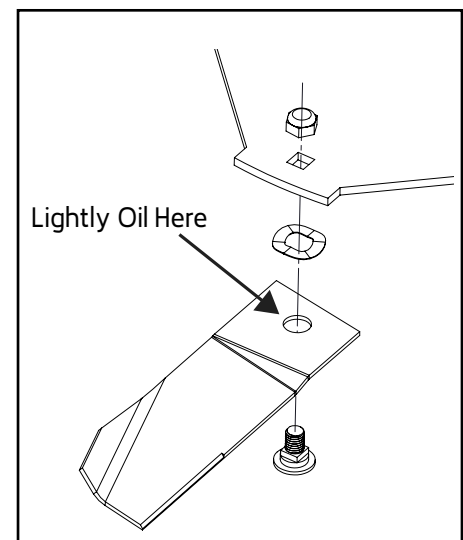


Illustration A

Greenfield FastCut Braking Systems

This Greenfield ride-on mower is equipped with a multi-purpose **Drive/Brake Control Pedal**, operated by the driver's right foot. It also has an **Emergency Brake** operated by the left foot and a hand operated **Parking Brake**. All three systems are completely independent of one another.

The manufacturer recommends the pivoted **Drive/Brake Control Pedal**, operated by the driver's right foot, should be used as the principle method of braking when operating this mower. The **Emergency Brake**, operated by the driver's left foot, should only be used in an emergency i.e. if the **drive/brake pedal** ceases to function for any reason. The **Parking Brake** should only be engaged after the machine has come to a stop, although this brake can also be used in an emergency if both other systems have failed.

The recommended **Drive/Brake** system incorporates two large and very durable low speed clutches that control forward, reverse, and stopping as selected by the driver. This **Drive/Brake** system will provide excellent and trouble free service for all driving and braking requirements for many years under normal conditions.

The **Emergency Brake**, operated by the driver's left foot, engages a disc brake on the mower's rear axle. Disc brakes require expendable brake pads to slow the rotation of the brake disc. If used only as an emergency brake, as the manufacturer intends, this brake will not require replacement brake pads for many years, if ever. If however, this brake receives continual use, the brake pads will quickly wear, requiring regular adjustments and periodic brake pad replacement.

Under no circumstances should the **Emergency Brake** be applied whilst the driver is simultaneously activating the **Drive/Brake pedal**. As with all Greenfield mowers, the warranty covers faulty workmanship and materials. Consumable items, such as brake pads, are not included in the warranty.

As with any brakes, they become less effective in wet conditions and can lose grip on well grassed areas, particularly if the grass is in a lush condition or wet. Therefore, it is very important to read and understand all the Safety Instructions included throughout this book and particularly the section titled **Mowing on Slopes** that indicates, amongst other important information, the maximum degrees of slope that mowers should be operated on.

IMPORTANT: Read and understand all safety and operating instructions in this book. Know the controls. Be sure the area that you are about to enter has no concealed hazards and does not exceed a 10° incline or decline or 5° across.

Brake Pad Wear Adjustment

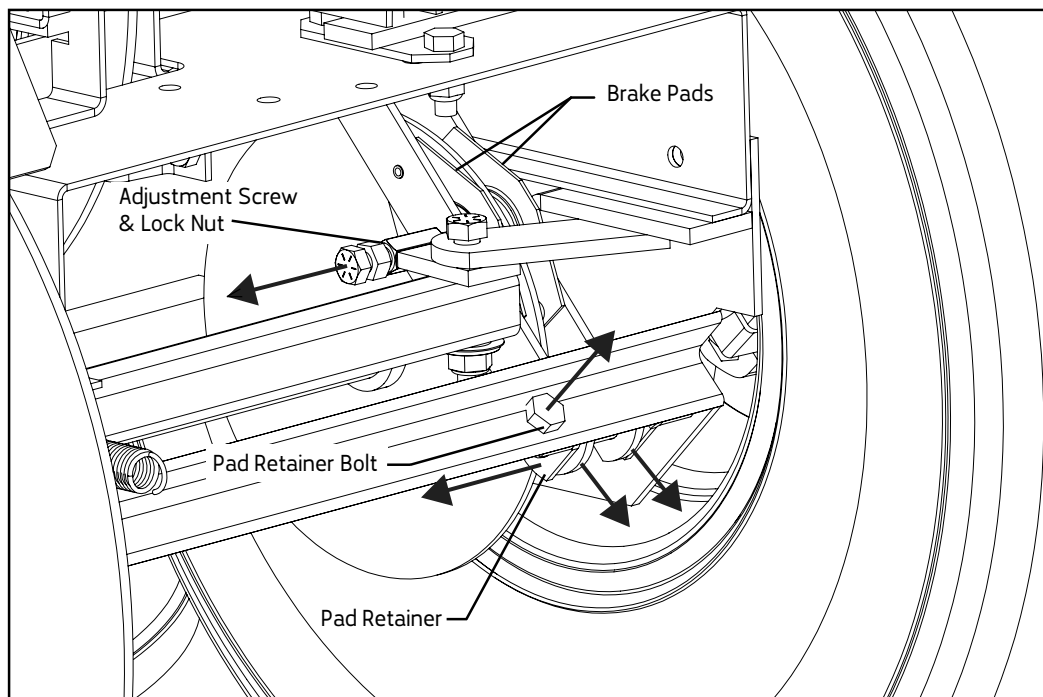
Periodically test the Emergency Foot Brake. If adjustment is required, follow the instructions below. The adjusting screw is located on the brake arm and bears against the sliding brake pad. As the brake pads wear, the brake disc is free to centralize between the sliding pad and the fixed pad. This adjusting screw compensates for wear on both pads and can be adjusted as described below.

1. Remove the spark plug lead to prevent accidental starting.
2. The adjusting screw is positioned at the rear of the mower, up and inside of the chassis. Access is easier if the rear of the mower is elevated slightly e.g. place rear wheels on 30cm blocks. Ensure mower cannot roll.
3. Loosen the locknut and screw in the adjusting screw until the brake pads have minimum clearance on the brake disc and are not binding.
4. Tighten the locknut while holding the adjusting screw stationary.
5. Check that the brake disc rotates freely between the pads, then replace the mower onto the ground.
6. Replace the spark plug lead.

Brake Pad Replacement

1. Follow steps 1 & 2 of *Brake Pad Wear Adjustment*.
2. Remove the pad retainer shaft.
3. Remove both brake pads by sliding down from rear of mower.
4. As the new pads will be thicker, it will be necessary to release the locknut and screw out the brake pad adjusting screw.
5. Fit the new brake pads.
6. Refit the pad retainer shaft.
7. Readjust the adjusting screw following steps 1 to 5 of *Brake Pad Wear Adjustment*. See *Illustration B*.
8. Oil all Pivots. **Do Not Oil Brake Pads or Disc.**

Illustration B



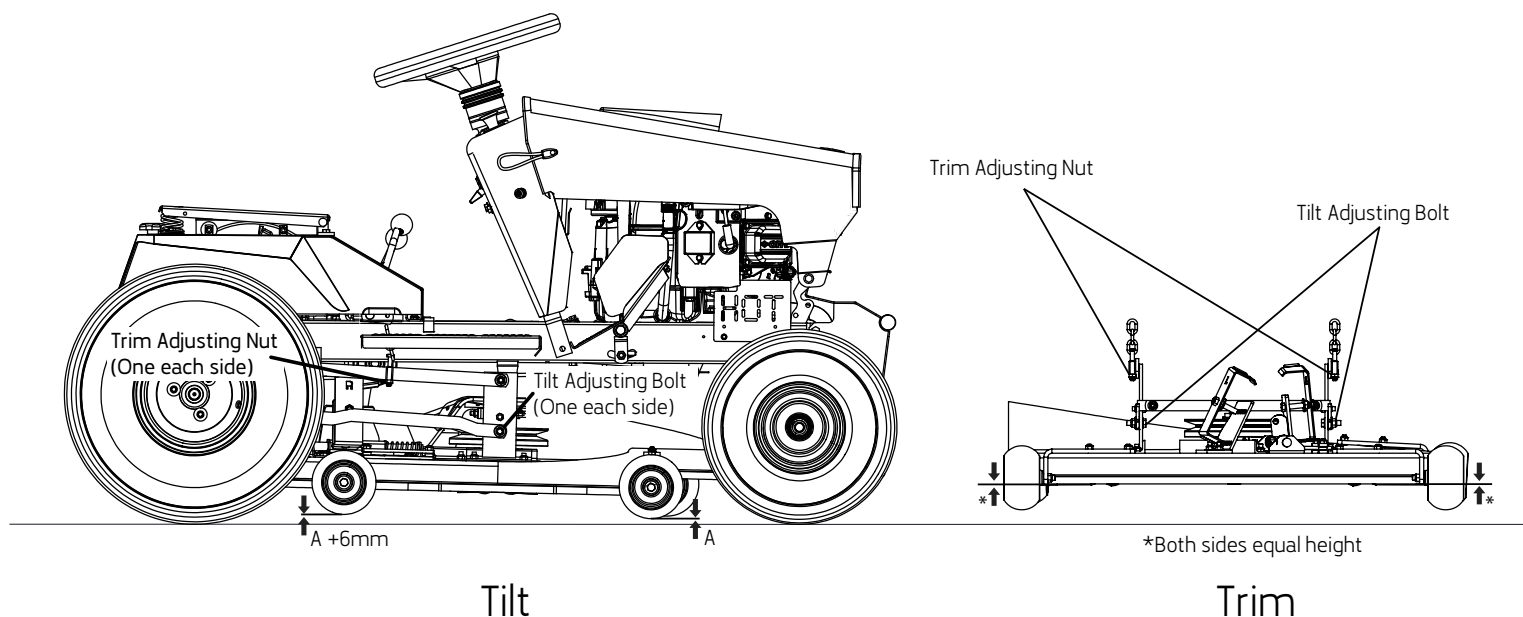
Cutting System

Cutter Deck Adjustment

Before checking TILT, which is the forward slant on the Cutter Deck from front to rear, or TRIM, which holds the Cutter Deck level side to side, first check the tyres are inflated to correct pressures. Also that the front axle beam is level in the chassis and all four wheels are on the same level, flat surface.

1. Remove the spark plug lead to prevent accidental starting.
2. Disengage blade clutch, SWITCH OFF.
3. Set the Trim by adjusting the trim adjusting nuts located on the top lifting arms of the cutter deck.
4. Set the Tilt by loosening the tilt adjusting bolts, which connect the bottom lifting arms to the cutter deck side plates.
5. Set the deck to the correct tilt (minimum 6mm lower at the front) then re-tighten both bolts. *See illustration C.*

Illustration C



Cutter Belt Adjustment

Warning: Remove the spark plug lead to avoid accidental starting **BEFORE** attempting any maintenance or inspection of the mower.

The self-adjusting belt tensioner will automatically adjust to compensate for normal wear and stretch of the V belt. However, as most belt stretch occurs during the early operating hours of the new belt, the first adjustment should be checked after approximately five (5) hours of operation with further checks at the fifty (50) hour services. Belt tension can easily be adjusted at the fixed idler pulley.

The fixed idler pulley has seven (7) bolt hole positions available, plus a sliding adjustable base. To adjust the belt using the fixed pulley bracket, disengage the cutters then loosen the two (2) Nyloc Nuts on the pulley bracket base and slide the bracket rearward and re-tighten the nuts, or relocate the pulley to the next rearward hole.

To Remove Cutter V Belt

1. Remove the spark plug lead to prevent accidental starting.
2. Lower the blade height to the LOW position.
3. Check the blade clutch is disengaged, SWITCH OFF.
4. Remove the V Belt from the engine pulley.
5. Undo the centre nuts and remove the belt guards.
6. Remove the V Belt from the cutter spindle pulley and remove the V Belt from the machine.

To Replace Cutter V Belt

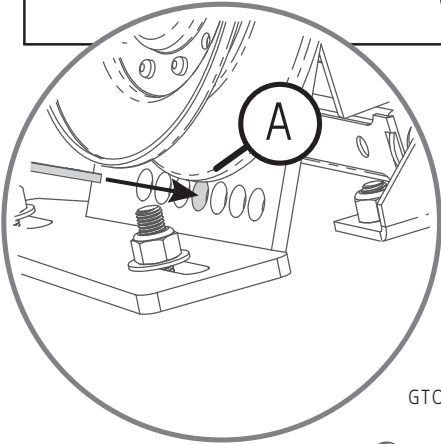
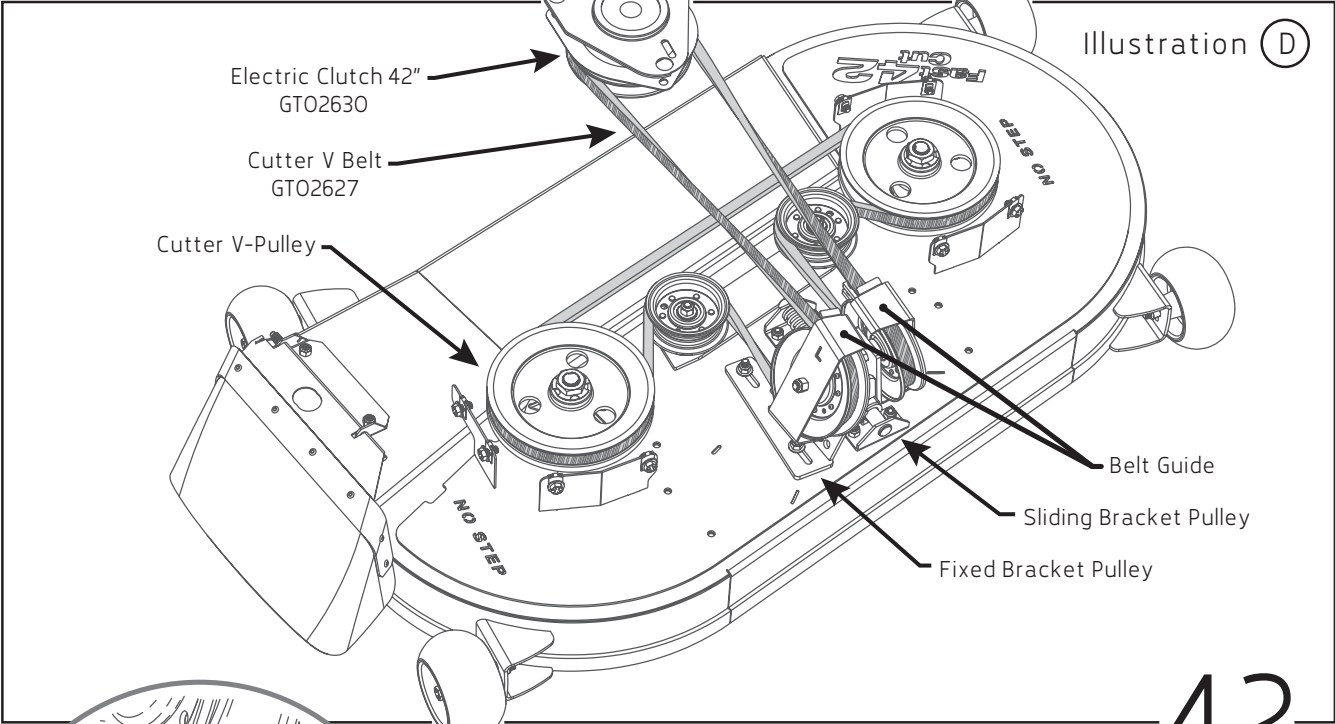
1. Remove the spark plug lead to prevent accidental starting.
2. Lower the blade height to the LOW position.
3. Check the blade clutch is disengaged, SWITCH OFF.
4. Fit the V Belt to the cutter pulley by maneuvering the belt around the pulley .
5. Position the belt guard over the bolt and engage on the bracket (ensure the correct guard is used - left and right sides are different - *compare to illustration*). With the wings of the belt guard over the belt and pulley, refit the washer and Nyloc Nut. *See illustration.*

IMPORTANT: Before progressing to the next step, check that both pulleys spin freely inside the belt and belt guards when the cutter clutch is disengaged.

6. Fit the V Belt to the bottom groove of the engine pulley. *Refer to illustration E showing cutter V belt run.*
7. Replace the spark plug lead.
8. From the operator's seat, run the engine and engage the cutters to check the V Belt operation. *Refer to Cutter Belt Adjustment.*

Note: A belt run-in period is required as follows - with the height adjusting lever in the green band (mid height position) engage cutter blades and run for a minimum of ten (10) minutes at medium engine speed. Ideally, a total run-in time would be approximately one (1) hour, during which time you can cut grass on a mid height position.

Cutter V Belt Run



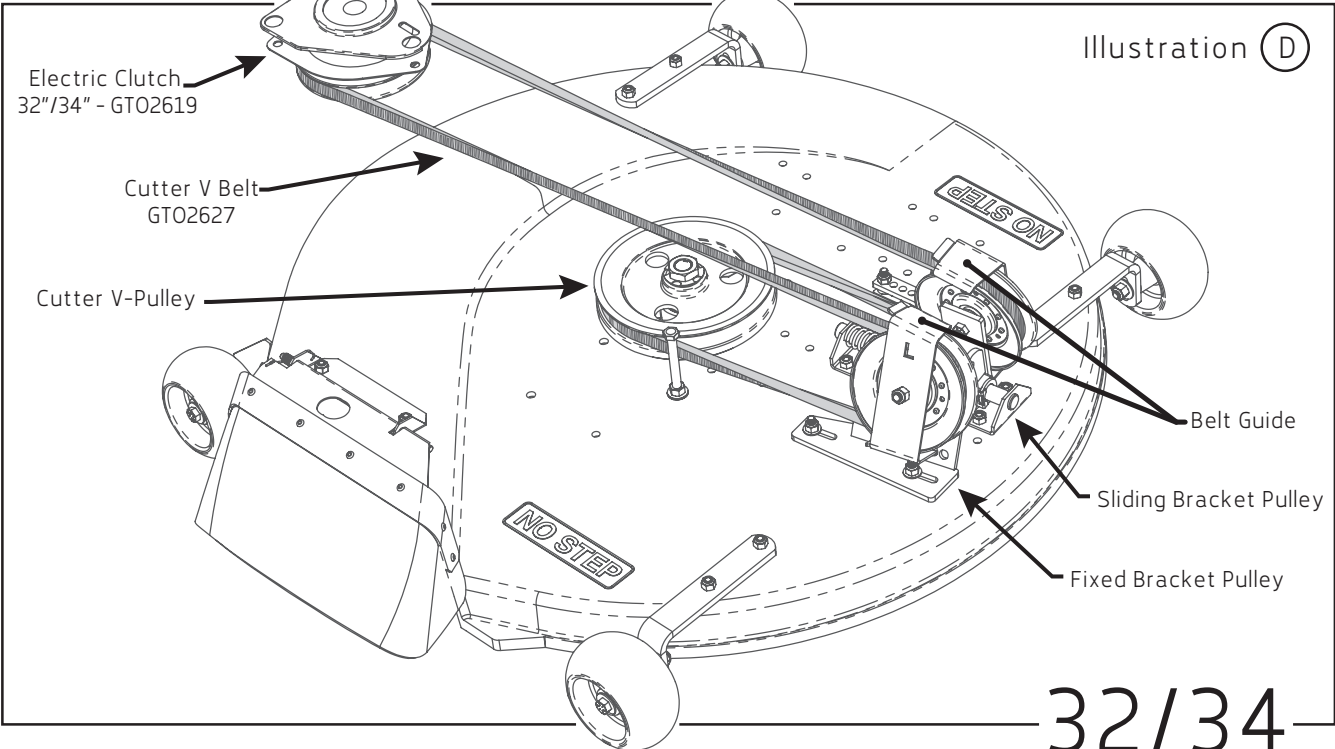
* GT22655 Belt Guide LH

* GT22656 Belt Guide RH

GT02466 Nyloc Nut

GT02466 Nyloc Nut

(A) Note location and lower alignment hole width for Belt Guide.



Drive System

To Remove Drive V Belt

1. Remove the spark plug lead to prevent accidental starting.
2. Remove the rear cover as follows - Lift up the seat and disconnect the wire to the seat cut out switch by separating the spade connector on the blue wire near the top of the battery. Undo the star knob at the top rear of the rear cover and position the height adjustment lever in a mid height position. Now remove the rear cover and seat assembly.
3. Set the blade height to the LOW position.
4. Swing back the steady bracket supporting the rear clutch link. *Refer illustration F.*
5. Remove the spring clip retaining the rear clutch link to the yoke. Lift off the rear clutch link and swing rearward. *Refer illustration G.*
6. With a spring release hook tool. *See illustration H.* Remove the tension spring from the idler pulley notch bar.
7. Release the notch bar leaf spring by inserting a flat screwdriver through the slot in the bracket above the leaf spring. Lever the leaf spring clear of the notch bar and hold in a released position, allowing the idler pulley to slide freely rearward to permit belt removal. *Refer illustration H.*
8. To remove the drive V Belt from the engine pulley, the cutter V Belt must first be removed. *Follow steps 1 to 4 of To Remove Cutter V Belt instructions.* Now remove the Drive V Belt from the engine pulley.
9. Lift the drive V Belt off both flat idler pulleys and remove the belt through the opening at the rear clutch link.

Illustration F

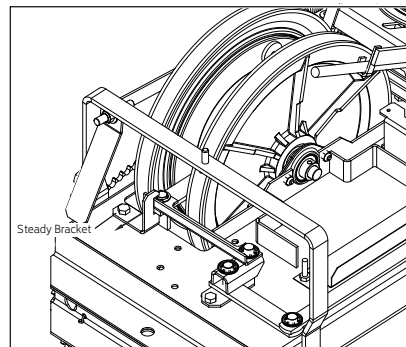


Illustration G

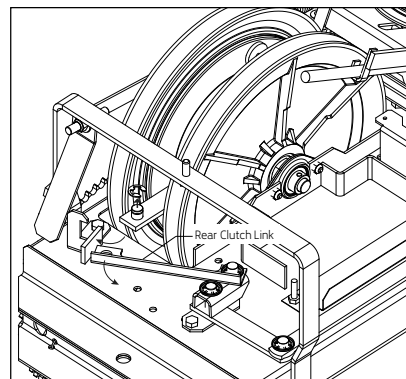


Illustration H

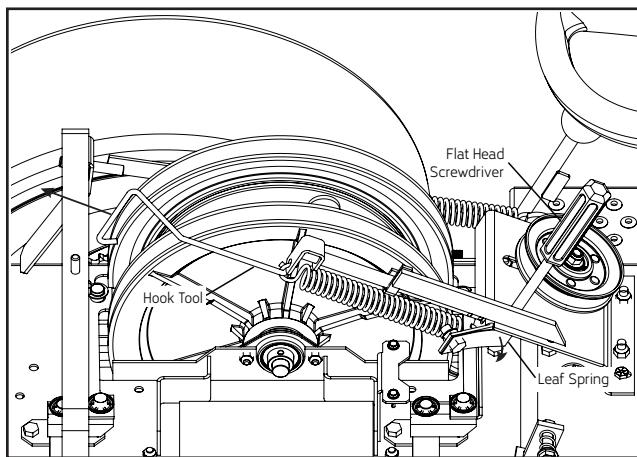
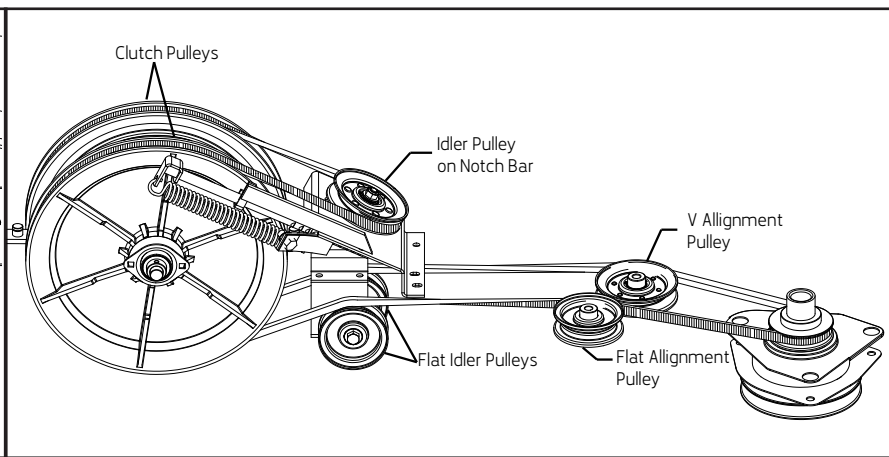


Illustration I



To Replace Drive V Belt

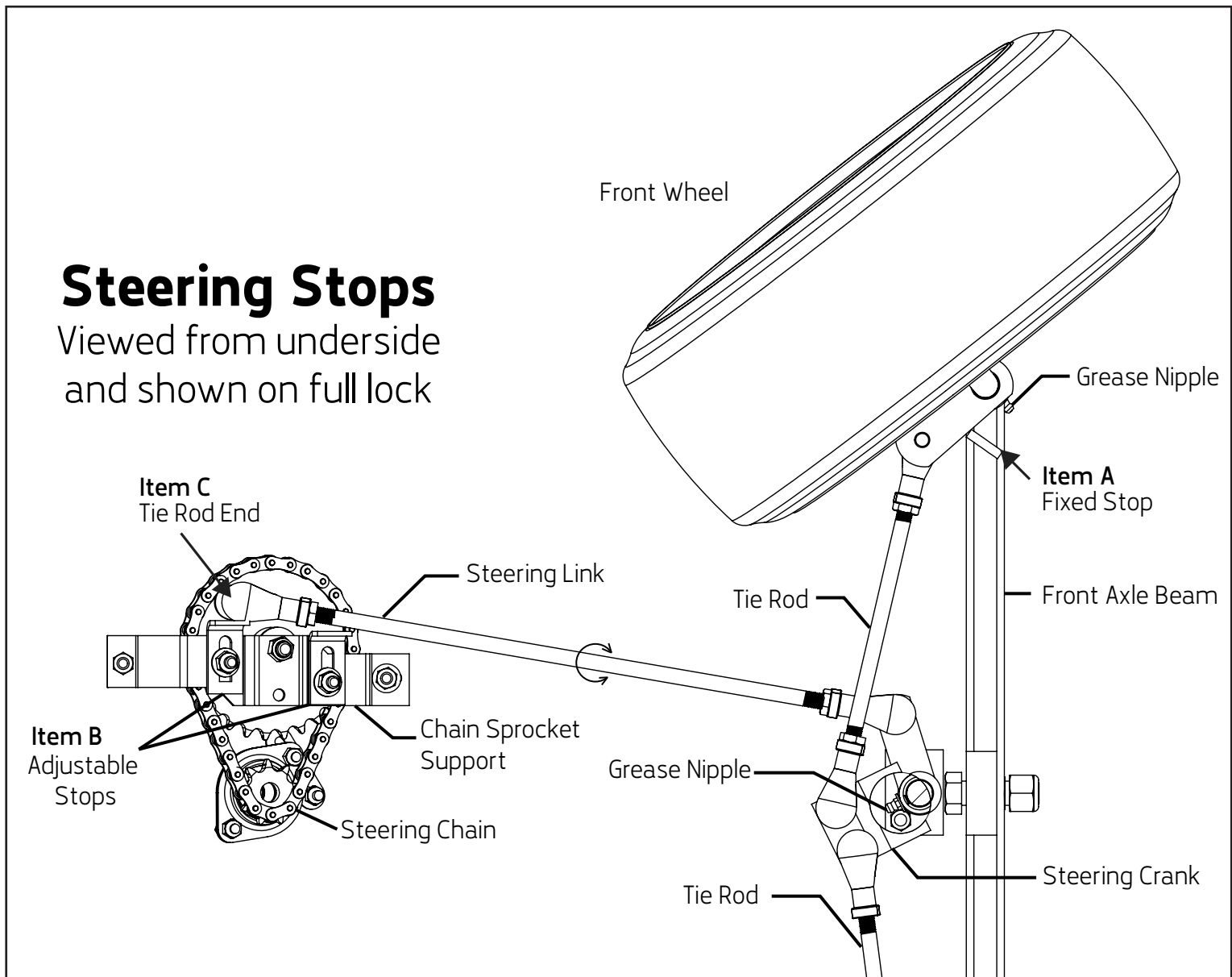
1. Feed enough belt down the back of the clutch pulleys to reach the engine pulley. Guide the belt over the cutter belt guide bar and underneath the engine pulley and into the top groove of the engine pulley. If the cutter V Belt is in position on the engine pulley, remove the belt by following steps 1 to 4 of *To Remove Cutter V Belt*.
2. Place the belt around both the V and Flat alignment pulleys and over the two flat idler pulleys. Place the belt into both clutch pulleys then into the idler pulley on the notch bar. This pulley will need to be in the fully rearward position to fit the belt, then slide it forward. Lubricate the slide with grease before fitting the belt.
3. Check the belt is still correctly in place over both the alignment pulleys and both the flat idler pulleys. The back of the belt runs on all flat pulleys. *See illustration I.*
4. Replace the notch bar tension spring using a hook tool.
5. Replace the rear clutch link and the spring clip.
6. Swing the steady bracket forward to support the rear clutch link.
7. Refit the Cutter V Belt by following steps 6 and 7 of *To Replace Cutter V Belt* instructions.
8. Replace the rear cover and reconnect the wire to the safety cut out switch for the seat.
9. Replace the spark plug lead.

Steering Stop Adjustment

The steering stops (Item B) are readily seen and accessible from under the right hand side of the chassis with the cutter deck in the LOW position. Adjustments should not be necessary, unless the steering has been damaged.

1. Remove the spark plug lead to prevent accidental starting.
2. Check the front wheel alignment, correct if necessary by resetting the adjustable tie rods. Also check that the steering wheel spokes are horizontal when the front wheels are in the straight-ahead position. Adjust the steering link if necessary. These adjustments must be completed before any steering stop adjustments are made.
3. Loosen the nuts retaining the two steering stops on the chain sprocket support. *Refer illustration J (item B).*
4. Turn the steering wheel full lock to the right until the right hand king pin is hard against the fixed stop (Item A).
5. Slide the right side stop on the chain wheel support until it hits against the tie rod end (Item C). Re-tighten the locking nut (Item B).
6. Turn the steering wheel full lock to the left then repeat step 5 above.
7. To check your adjustments are correct, turn the steering wheel to either lock, noting stops (Item A and Item B) make contact at the same moment. This will ensure the smallest turning circle without unnecessary strain on the steering components.
8. Replace the spark plug lead.

Illustration J

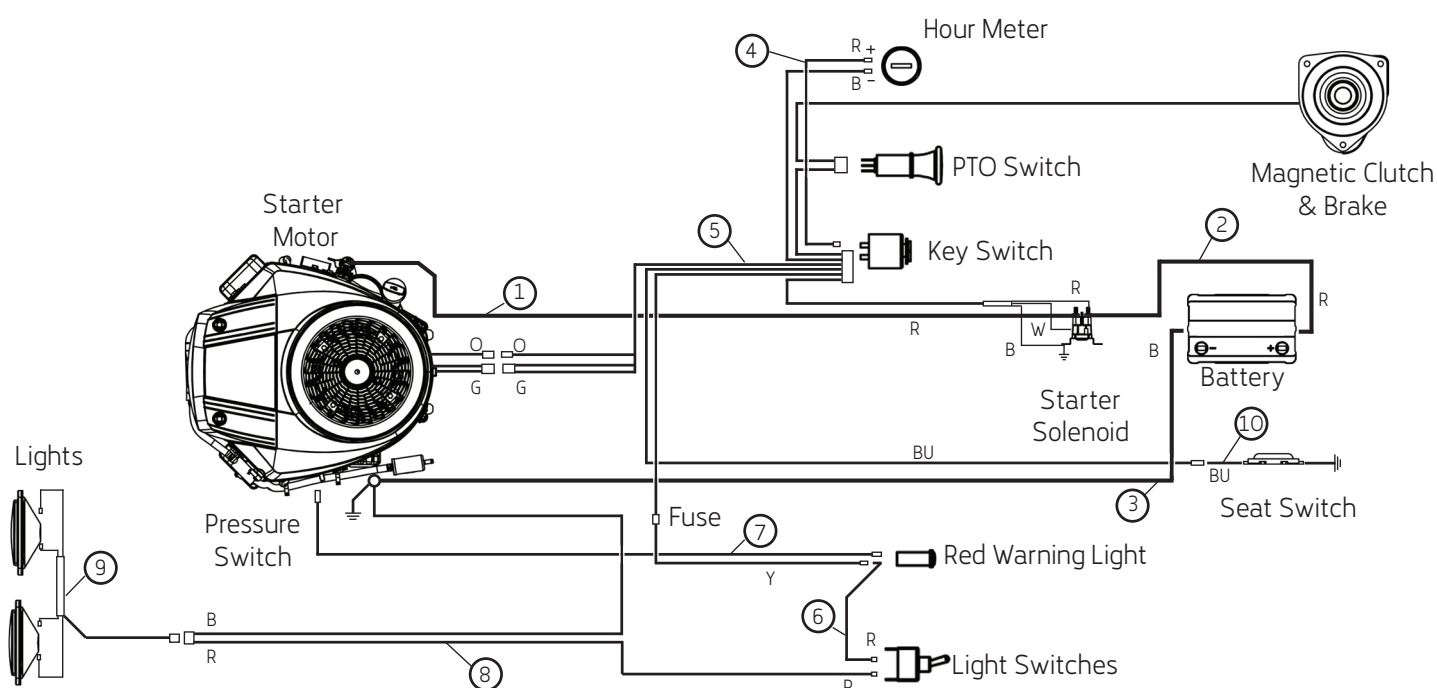


Chain Adjustments

Rear Drive Chain Adjustment

1. Remove the spark plug lead to prevent accidental starting.
2. Remove the rear cover as follows - Lift up the seat and disconnect the wire to the seat cut out switch by separating the spade connector on the blue wire near the top of the battery. Undo the star knob at the top rear of the rear cover and position the height adjustment lever in a mid height position. Now remove the rear cover and seat assembly.
3. Loosen the two locking nuts on the chain adjuster mechanism, only enough to allow the mechanism to slide. Use a 14mm ring spanner or socket.
4. Undo the front adjusting nut on the screw adjusting mechanism, using a 13mm open-end spanner.
5. Using the same spanner adjust the back adjusting nut to take up excess slack in the drive chain. The chain is tensioned correctly when the slack has been reduced to approximately 3mm. Do not over tension.
6. Re-tighten the two locking nuts. Recheck the chain tension. If necessary the procedure may need to be repeated and the adjusting nut backed off slightly to comply with the recommended chain tension.
7. Re-tighten the front adjusting nut.
8. Replace the rear cover, the star knob and reconnect the wire to the safety cut out switch for the seat.
9. Replace the spark plug lead.

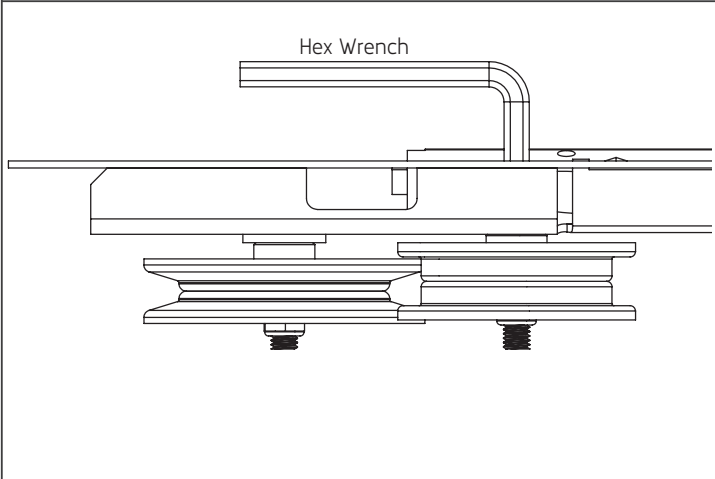
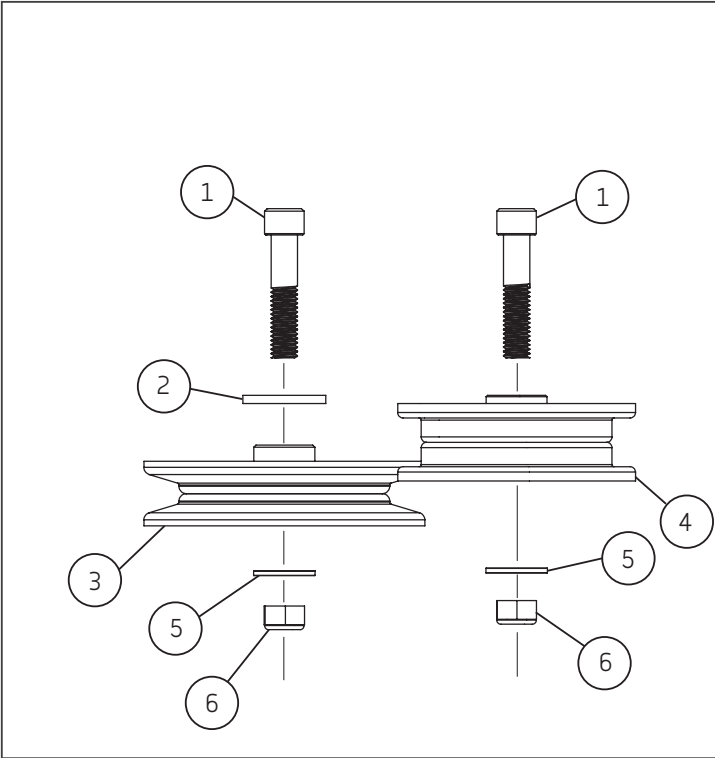
Electrical Circuits



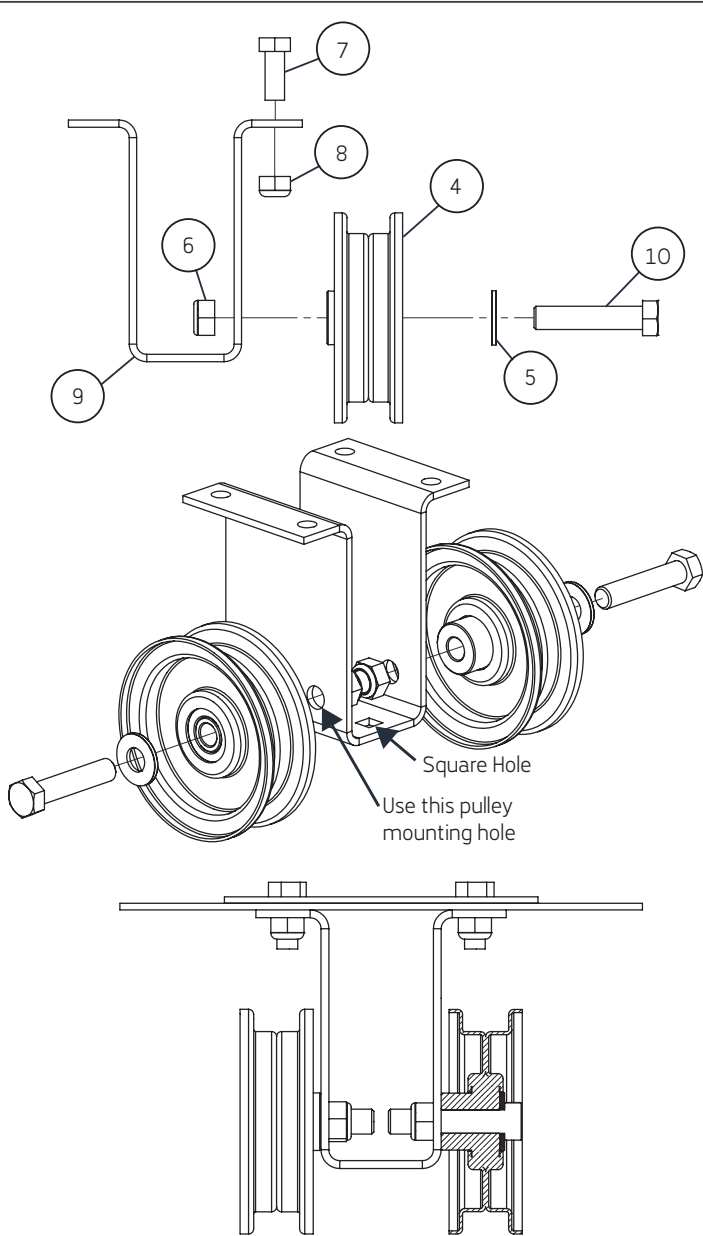
Index	Part No.	Description
1	GT 6129	Red Cable - Solenoid to Starter Motor
2	GT 14364	Red Cable - Battery to Solenoid
3	GT 14370	Black Cable - Battery to Engine Ground
4	GT 20219	Red Wire - Key Switch to Hour Meter
5	GT 22047	Wiring Harness - Key Switch
6	GT 20216	Red Wire - Warning Light
7	GT 20215	Black Wire - Oil Switch
8	GT 20197	Wire Harness - Light Switch
9	GT 20196	Wire Harness - Headlights
10	GT 22037	Seat Switch Harness

Colour Legend
B - Black
O - Orange
R - Red
W - White
Y - Yellow
G - Grey
BU - Blue

Idler Pulleys - Drive Belt



Assembly of Alignment Pulleys



Assembly of Flat Idler Pulleys

Index	Part Number	Description
1	GT02015	High tensile cap screw
2	GT16317	Washer
3	GT02602	V-Pulley
4	GT01009	Flat Idler Pulley
5	GT01012	Washer

Index	Part Number	Description
6	GT02466	Nyloc Nut
7	GT01455	Bolt
8	GT01020	Nyloc Nut
9	GT18312	Bracket
10	GT00118	Bolt

Parts and specifications subject to change without notice.

To Remove V Alignment or Flat Pulleys

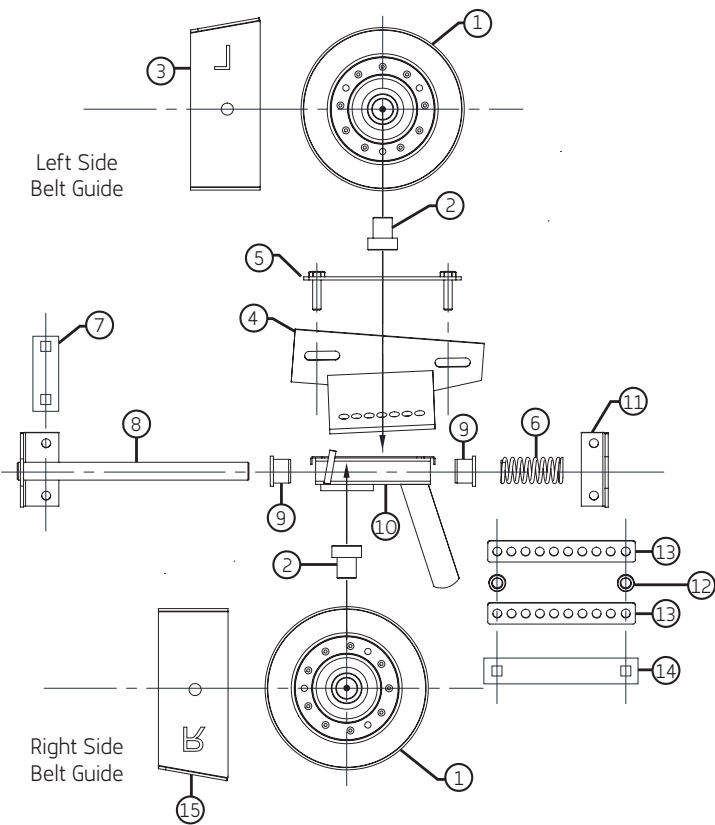
1. Hold the H.T. cap screw firmly by using a 5/16" hexagon wrench inserted down a hole in the step through the floor area.
2. Remove the Nyloc Nut and washer from the end of the cap screw - remove the pulley.

To Replace V Pulley or Flat Idler Pulley

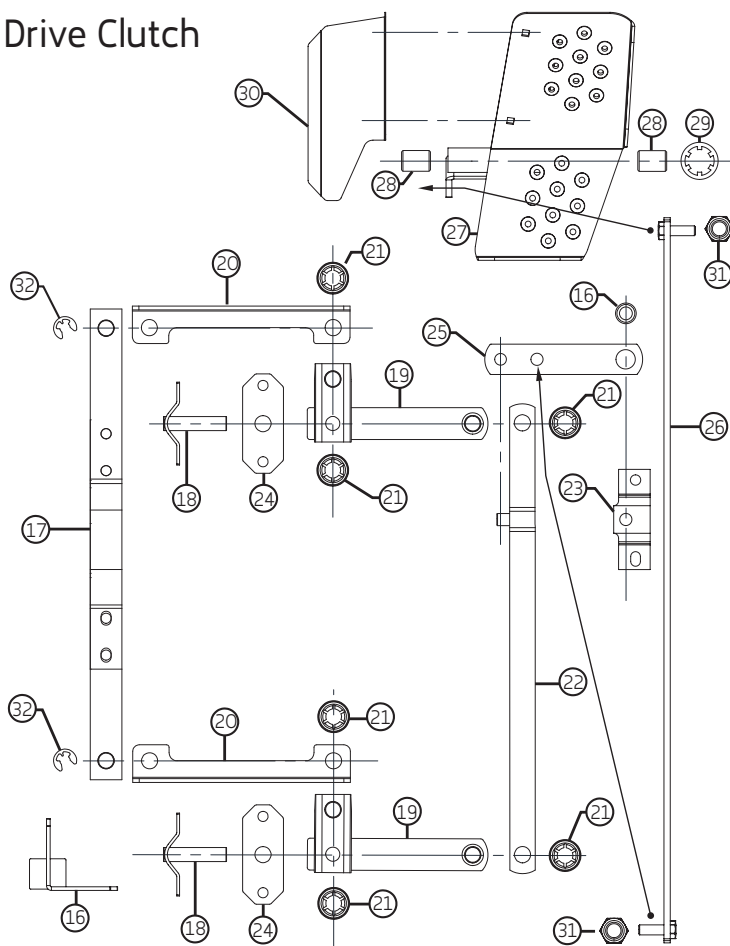
1. Insert cap screw down through hole in floor, making sure that washer item 2 is correctly positioned over top of pulley.
2. Fit washer and Nyloc Nut and tighten firmly.

Linkages

Cutter Deck Idler Pulleys



Drive Clutch

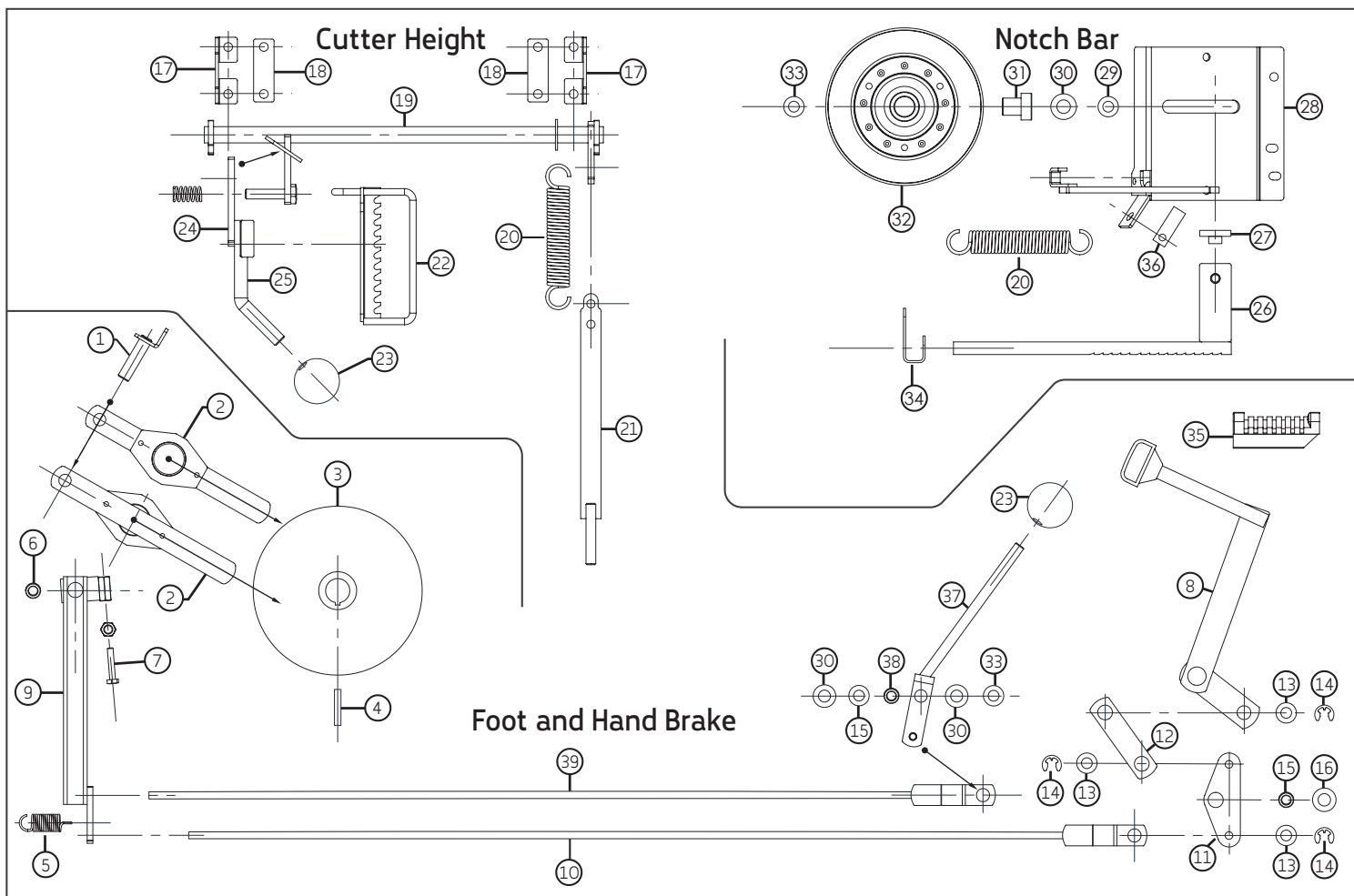


Index	Part Number	Description
1	GT02592	V pulley & bearing
2		Bearing adaptor - fitted to pulley
3	GT22655	L.H. belt guide
4	GT18855	Fixed pulley bracket
5	GT13280	Retainer
6	GT22051	Spring - compression
7	GT21158	Retainer
8	GT22315	Rail assembly
9	GT01766	Bush
10	GT22355	Sliding bracket
11	GT13776	Bracket
12	GT00730	Bush
13	GT14318	Bar
14	GT21161	Retainer
15	GT22656	R.H. belt guide
16	GT23470	Steady - clutch yoke

Index	Part Number	Description
17	GT20945	Yoke unit
18	GT20395	Pivot pin assembly
19	GT20405	Pivot arm assembly
20	GT14309	Clutch link
21	GT02057	Retainer
22	GT18785	F - R link
23	GT18337	Pivot bracket
24	GT22151	Support
25	GT18318	Link
26	GT20390	F - R control
27	GT22305	Foot pedal
28	GT12394	Bush
29	GTO0580	Retainer
30	GT22156	Heat shield
31	GTO1484	Nyloc nut
32	GTO2036	Spring clip

Parts and specifications subject to change without notice. Standard hardware not shown.

Linkages

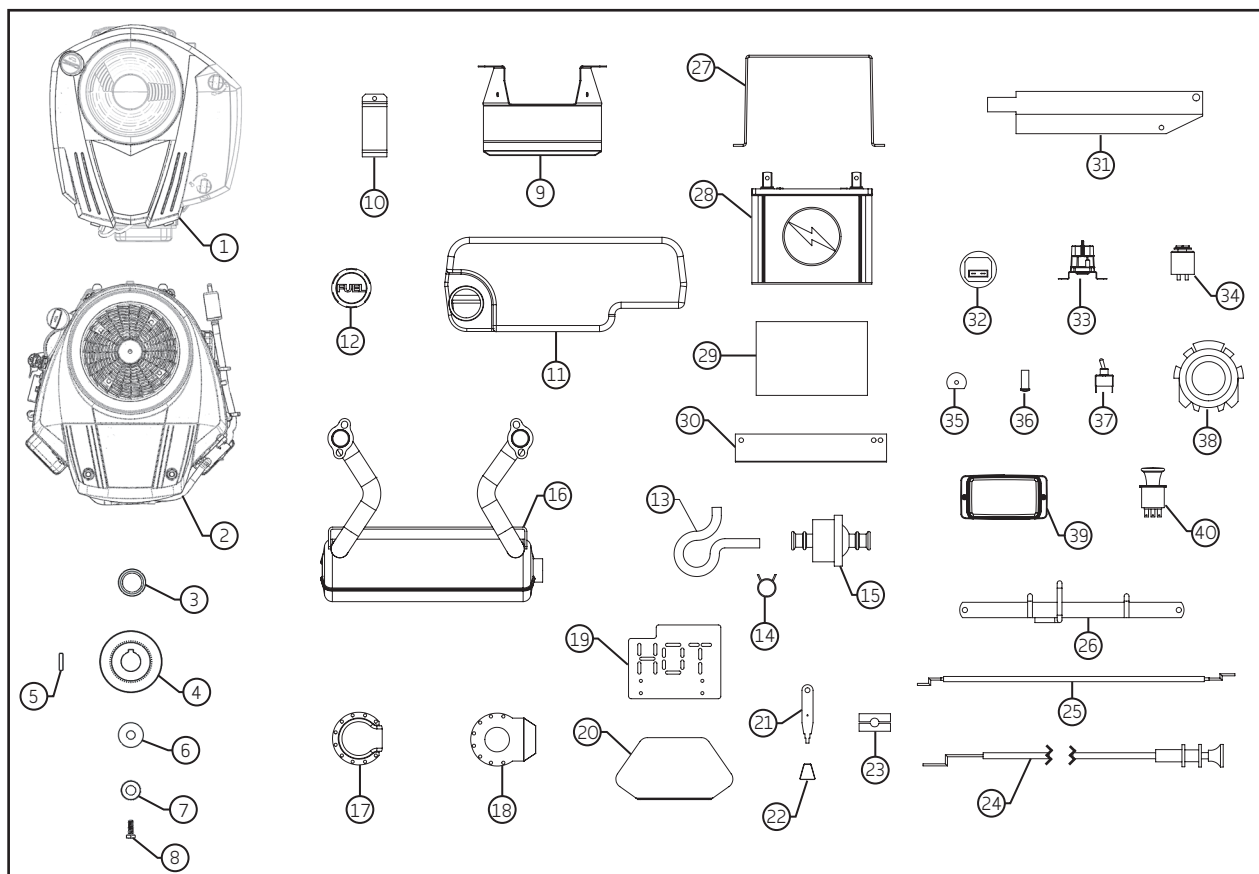


Index	Part Number	Description
1	GT15270	Anchor - brake pad
2	GT22920	Brake pad unit
3	GT18660	Brake disc
4	GT12093	Key
5	GT20009	Spring - tension
6	GT22177	Pivot bush
7	GT01023	Adjusting screw
8	GT22480	Brake pedal
9	GT22485	Brake arm 34" model
9	GT22545	Brake arm 32" model
10	GT22490	Brake rod
11	GT22475	Pivot assembly
12	GT22474	Link
13	GT02046	Crinkle washer
14	GT02010	Circlip
15	GT00730	Pivot bush
16	GT22176	Washer
17	GT18313	Pivot bracket
18	GT18314	Packer
19	GT18820	Height adjuster shaft

Index	Part Number	Description
20	GT20006	Spring - tension
21	GT18775	Tensioner
22	GT21285	Height adjuster rack
23	GT01565	Knob
24	GT07071	Spring - compression
25	GT18705	Handle
26	GT18765	Notch bar
27	GT00608	Slide bush
28	GT18760	Bracket
29	GT00023	Washer
30	GT00579	Wave washer
31	GT22043	Bearing adaptor
32	GT02602	V pulley complete
33	GT01012	Washer
34	GT07308	Anchor - spring
35	GT02604	Brake rubber pad
36	GT14023	Leaf spring
37	GT18980	Handle
38	GT14341	Shim washer
39	GT18805	Brake rod

Parts and specifications subject to change without notice. Standard hardware not shown.

Engine and Electrical

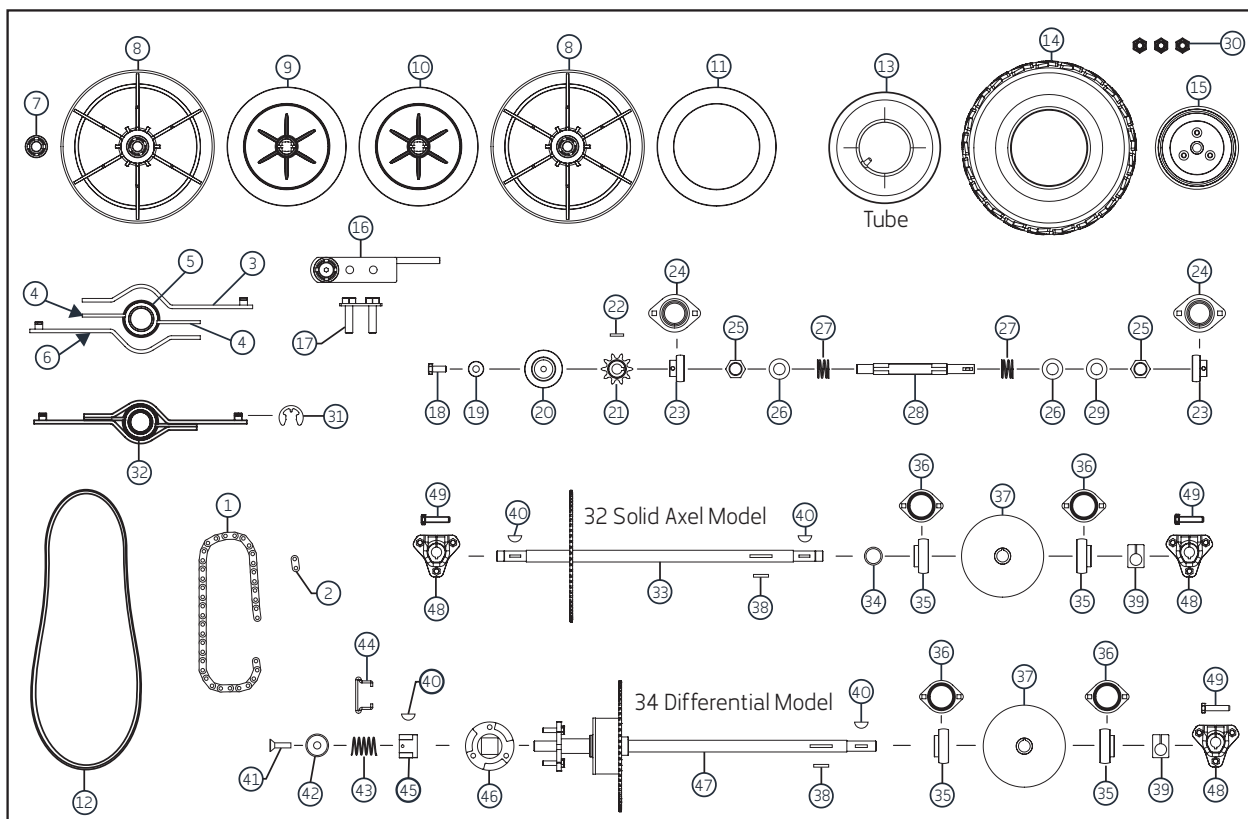


Index	Part Number	Description
1		17.5HP single cylinder engine
2		25HP twin cylinder engine
3	GT18047	Crankshaft spacer
4	GT22049	Pulley - engine
5	GT05542	Key
6	GT03192	Washer
7	GT02511	Cone washer
8	GT02508	Bolt
9	GT22412	Support - fuel tank
10	GT22194	Clamp - fuel tank
11	GT02579	Fuel tank - bare
12	GT02249	Cap - fuel tank
13	RM00907	Fuel hose x 1m length
14	GT02221	Hose clamp
15	GT02309	Fuel filter
16	GT22075	Muffler - B&S 25hp
16	GT22075	Muffler - Vanguard 23hp
17	GT22065	Exhaust Outlet
18	GT22207	Exhaust Deflector
19	GT20213	Heat shield R.H. exhaust pope
20	GT23181	Heat shield L.H. foot rest

Index	Part Number	Description
21	GT20169	Throttle lever
22	GT02026	Knob - throttle lever
23	GT01252	Cable clamp
24	GT20057	Choke cable - where fitted
25	GT20913	Throttle cable - single cyl
25	GT20957	Throttle cable - twin cyl
26	GT22455	Cutter clutch retainer
27	GT22184	Battery clamp
28	GT02362	Battery
29	GT14336	Rubber mat - battery
30	GT22171	Battery retainer
31	GT20176	Support - electric harness
32	GT06084	Hour meter
33	GT02220	Solenoid - starter motor
34	GT02219	Off-on-start- key switch
35	GT12345	Insulator - battery positive hole
36	GT02275	Oil failure light
37	GT02274	Light switch
38	GT02388	Seat safety switch
39	GT20055	Headlight
40	GT02618	PTO switch

Parts and specifications subject to change without notice. Standard hardware not shown.

Drive Clutch & Rear Axle

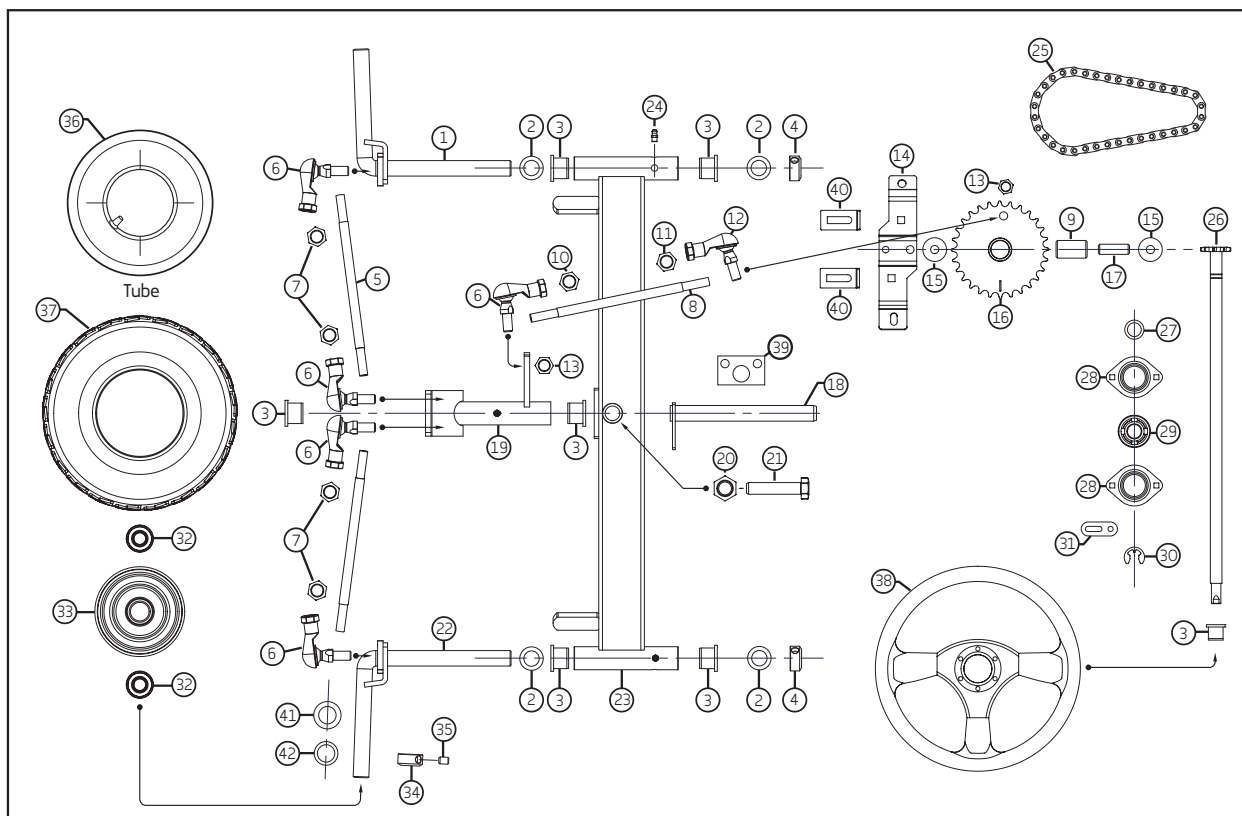


Index	Part Number	Description
1	GT18006	Roller chain
2	GT00501	Connecting link
3	GT20510	Yoke - top half
4	GT20191	Retainer
5	GT20935	Clutch bearing unit
6	GT20515	Yoke - bottom half
7	GT02206	Ball bearing - clutch pulley
8	GT00920	Clutch pulley complete
9	GT06855	L.H. drive plate complete
10	GT06855	R.H. drive plate complete
11	GT06012	Clutch lining
12	GT02369	V belt - drive 32" & 34" models
12	GT012004	V belt - drive 42" model
13	GT02584	Tube - 32" Model
13	GT02583	Tube - 34" model
14	GT02580	Tyre - 32" model
14	GT02581	Tyre - 34" model
15	GT01624	Wheel hub
15	GT02929	Wheel hub - 34" model L.H.
16	GT22943	Chain adjuster unit
17	GT22470	Retainer - chain adjuster
18	GT01455	Setscrew
19	GT02542	Cone washer
20	GT18334	Disc - chain guard - 32" model
21	GT12102	10 tooth sprocket
22	GT02910	Key
23	GT00392	Ball bearing - drive shaft

Index	Part Number	Description
24	GT07017	Bearing plates
25	GT00347	Nut
26	GT07303	Washer
27	GT00357	Spring
28	GT18031	Drive shaft
29	GT00539	Shim
30	GT02861	Wheel nut
31	GT02036	Spring clip
32	GT20945	Yoke unit
33	GT22014	Rear axle & sprocket - 32" model
34	GT18310	Spacer
35	GT00390	Ball bearing
36	GT07083	Bearing plate
37	GT18660	Brake disc
38	GT12093	Key
39	GT07032	Clamp
40	GT00516	Key
41	GT02425	Screw
42	GT10488	Spring retainer
43	GT02958	Spring
44	GT02957	Handle
45	GT02956	Engagement block
46	GT02868	Engagement plate
47	GT02850	Rear axle differential - 34" model
48	GT01625	Wheel flange
49	GT02517	Bolt

Parts and specifications subject to change without notice. Standard hardware not shown.

Steering & Front axle

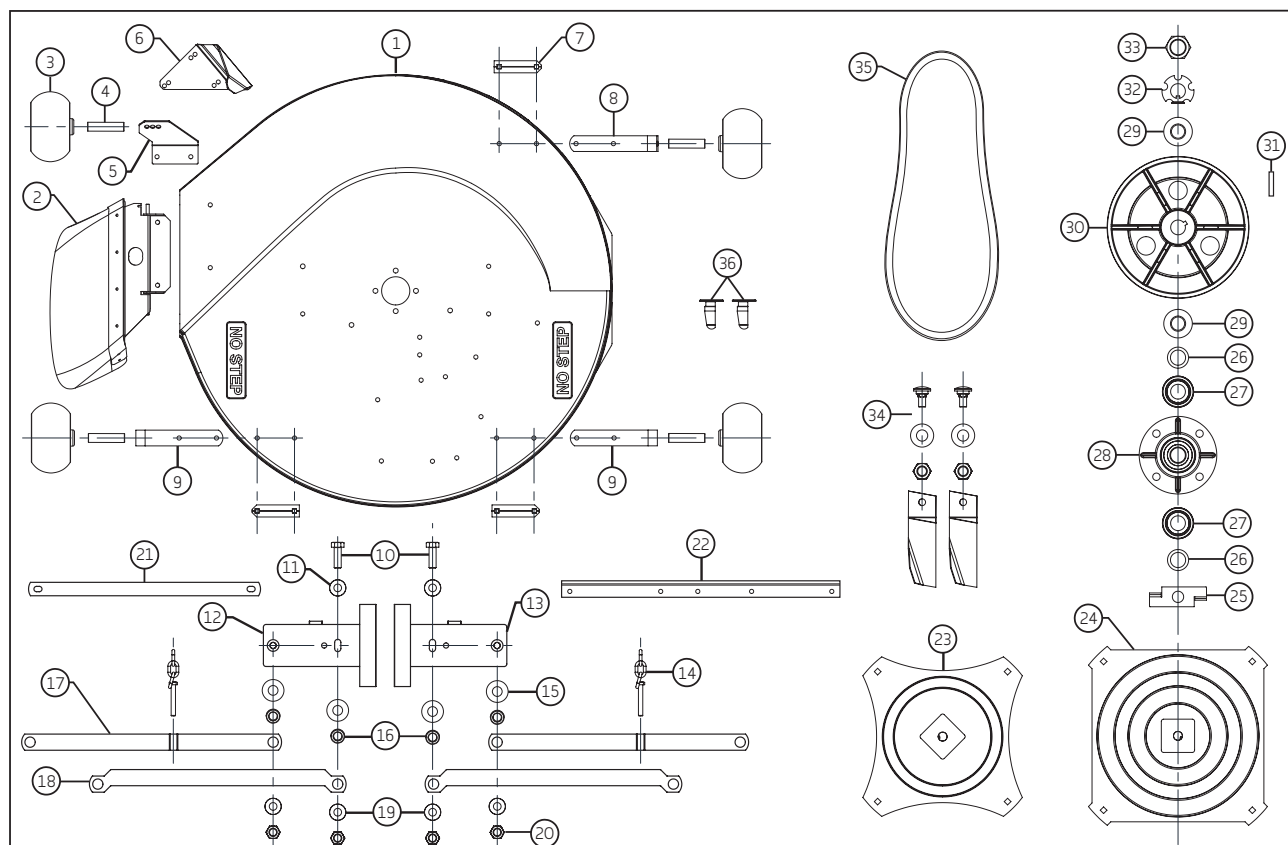


Index	Part Number	Description
1	GT20540	R.H. king pin
2	GT07304	Washer
3	GT01766	Bush
4	GT07009	Collar
5	GT18078	Tie rod - 32" model
5	GT20052	Tie rod - 34" model
6	GT06044	Tie rod end
7	GTO2406	Lock nut
8	GT22003	Rod - steering link
9	GT22032	Bronze bush
10	GTO2406	Lock nut
11	GTO2295	Lock nut L.H. thread
12	GTO2294	Tie rod L.H. thread
13	GTO2090	Nyloc nut
14	GT18329	Support
15	GTO2483	Brass washer
16	GT22555	Chain wheel
17	GT22033	Bush
18	GT18645	Pivot pin
19	GT20550	Steering crank
20	GTO2042	Nyloc nut
21	GTO2476	Bolt
22	GT20545	L.H. king pin

Index	Part Number	Description
23	GT21345	Axle beam - 32" model
23	GT20530	Axle beam - 34" model
24	GT01924	Grease nipple
25	GT13813	Roller chain complete
26	GT18880	Steering shaft
27	GT20018	Spacer
28	GT07017	Bearing plate
29	GT07010	Ball bearing
30	GTO2470	Circlip
31	GT18324	Locking tab
32	GTO0396	Ball bearing - wheel hub
33	GT7007UP	Wheel hub alluminium 32" model
34	GT07009	Collar
35	GTO0520	Socket grub screw
36	GT00456	Tube - 32" model
36	GT01341	Tube - 34" model
37	GT00455	Tyre - 32" model
37	GT01340	Tyre - 34" model
38	GTO2582	Steering wheel
39	GT22150	Reinforcing plate
40	GT18317	Steering stops
41	GT07304	Washer
42	GT22185	Bush

Parts and specifications subject to change without notice. Standard hardware not shown.

Cutter Deck 32 /34

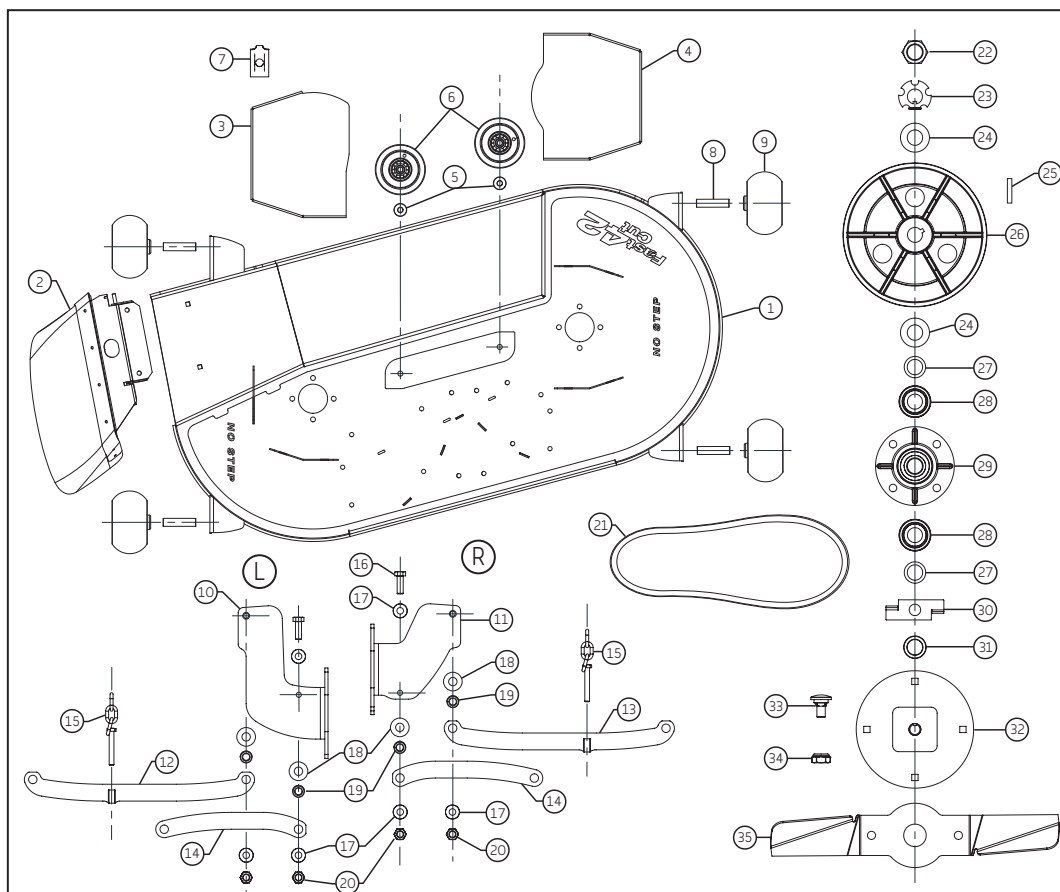


Index	Part Number	Description
1	GT22158	32" cutter deck drilled casting
1	GT20162	34" cutter deck drilled casting
2	GT20936	Stone guard
3	GT02263	Jockey wheel
4	GT20049	Bush
5	GT20180	Bracket
6	GT14392	Skid - 32" only
7	GT21160	Retainer
8	GT12362	Bracket - 34" only
9	GT12362	Bracket - all
10	GT00003	Bolt
11	GT01567	Cone washer
12	GT20610	L.H. side plate
13	GT20605	R.H. side plate
14	GT18975	Chain - adjuster
15	GT00579	Wave washer
16	GT00730	Bush
17	GT18965	Top link

Index	Part Number	Description
18	GT22159	Bottom link
19	GT01012	Washer
20	GT02466	Nyloc nut
21	GT20223	Spreader
22	GT20192	Stiffener - 34" only
23	GT13025	32" cutter disc & spindle
24	GT20285	34" cutter disc & spindle
25	GT08205	Bearing protector
26	GT00539	Shim
27	GT20177	Bearing shield
28	GT13815	Spindle housing complete
29	GT02393	Domed spring washer
30	GT22011	V pulley
31	GT14047	Key
32	GT14390	Tab washer
33	GT02003	Nut M20 L.H.
34	GT02139	Blade and bolt set
35	GT02365	V belt - cutters
36	GT01760	Nylon button

Parts and specifications subject to change without notice. Standard hardware not shown.

Cutter Deck 42

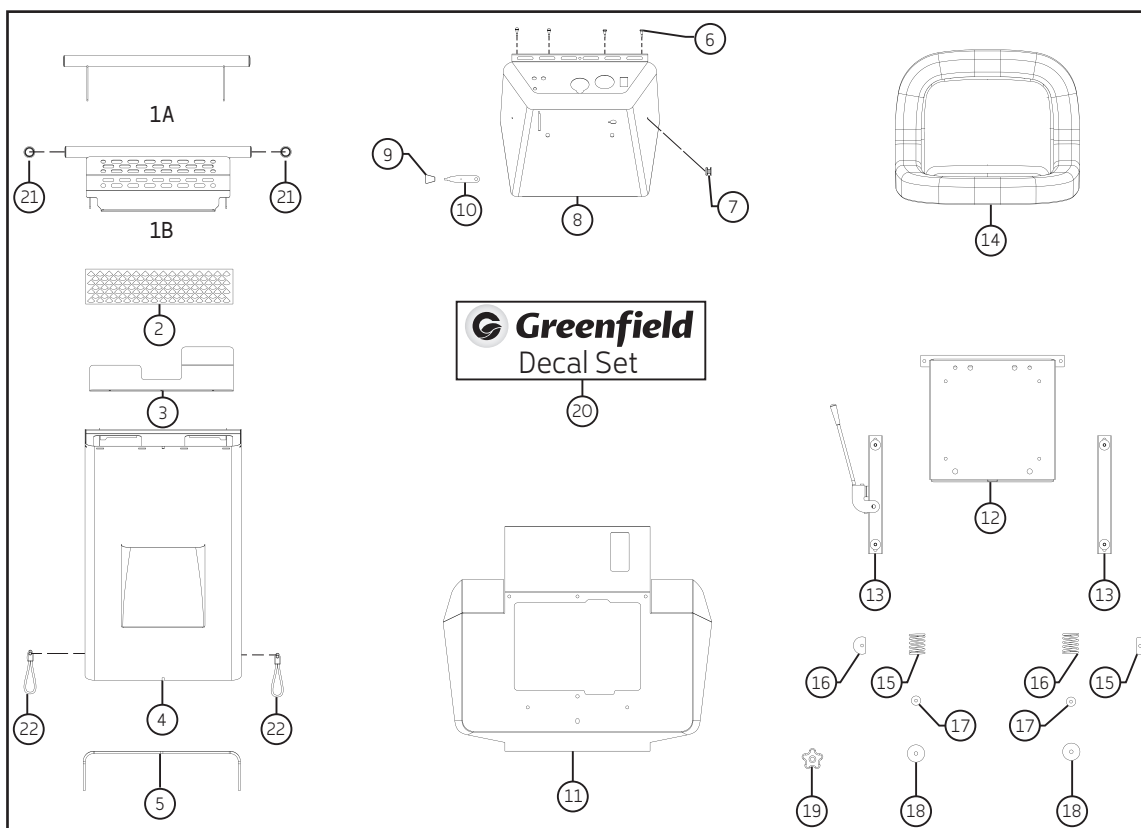


Index	Part Number	Description
1	GT22360	Cutter deck assembly
2	GT20936	Stone guard
3	GT22388	Pulley cover L.H.
4	GT22389	Pulley cover R.H.
5	GT22053	Idle pulley adaptor
6	GT02625	Flat idler pulley
7	GT01737	U nut
8	GT20049	Bush
9	GT02263	Jockey
10	GT22372	L.H. side plate
11	GT22374	R.H. side plate
12	GT22392	L.H. top link
13	GT22391	R.H. top link
14	GT22394	Lower link
15	GT22705	Chain - adjuster
16	GT00003	Bolt
17	GT01012	Washer
18	GT00579	Wave washer

Index	Part Number	Description
19	GT00730	Bush
20	GT02466	Nyloc nut
21	GT02627	V belt - cutters
22	GT02003	Nut M20 L.H.
23	GT14390	Tab washer
24	GT02393	Domed spring washer
25	GT14047	Key
26	GT22011	V pulley
27	GT00539	Shim
28	GT20177	Bearing shield
29	GT13815	Spindle housing
30	GT22181	Bearing protector (wiper)
31	GT22055	Spacer
32	GT22401	Disc spindle
33	GT02100	Blade bolt
34	GT01484	M10 nut
35	GT02632	Blade

Parts and specifications subject to change without notice. Standard hardware not shown.

Body Work and Seat



Index	Part Number	Description
1A	GT22415	Front bumper - single cyl
1B	GT20570	Muffler guard/ bumper - twin cyl
2	GT22163	Grille - 32" model only
3	GT22162	Heat shield - head lights single cyl
3	GT22161	Heat shield - head lights twin cyl
4	GT22320	Bonnet - standard
4	GT22611	Bonnet - deluxe
5	RM906 X 1m	Pinch weld - front or rear
6	GT06094	Buffer grommet
7	GT02254	Bobbin - strap
8	GT22615	Steering cowl
9	GT02026	Knob - throttle lever
10	GT20169	Lever - throttle
11	GT18670	Rear cover

Index	Part Number	Description
12	GT21340	Hinged seat base
13	GT02367	Seat runners (set)
14	GT02366	Seat
15	GT14050	Spring
16	GT10452	Clamp
17	GT10451	Locating block
18	GT01660	Washer
19	GDO5545	Knob - rear cover
20	GT22046	Decal sheet - 32" model
20	GT22041	Decal sheet - 34" model
21	GT06081	Plastic bung - bumper bar
22	GT07015	Strap - bonnet hold down

Parts and specifications subject to change without notice. Standard hardware not shown.

Warranty

Domestic/ Private Use

Greenfield Mowers Pty Ltd, the manufacturer warrants all Greenfield ride on mowers used in domestic applications to be free of faulty workmanship and material only, for a period of twenty four (24) months from the date of sale. An additional thirty six (36) months conditional warranty is optional on all machines used in domestic applications. The optional warranty is conditional on:

1. The supplied warranty registration card being completed and returned to Greenfield within 14 days of the date of purchase.
2. Regular servicing being performed by an authorized Greenfield dealer as per Greenfield recommendations (the initial five (5) hour service and then every fifty (50) hours).
3. The service card showing the programmed services have been performed and is presented when warranty is requested. If over two (2) years, a copy of the service booklet may be requested.
4. The machine hours being less than five hundred (500) hours.
5. Any claim on the warranty must be notified to the authorized Greenfield dealer from whom you bought the mower or, if they are not reasonably close to you when you make the claim, then to any authorized Greenfield dealer conveniently close to you. You must give proof of purchase of the mower and provide the dealer with all information you can, and which the dealer might reasonably require about your claim, including where possible the claimed defective part.
6. If the dealer requires, you must take the mower (or part) to them for checking when making your claim.
7. Subject to approval by Greenfield Mowers, the dealer may in their discretion pay reimbursement towards your actual costs of making the defect claim. Any such claim must be supported by all appropriate documentation the dealer may reasonably require from you.
8. The dealer will deal with any part found to be defective subject to the terms of this warranty and exclusions provided for at law or by statute.
9. If you have any concerns about the processing of your warranty claim by the dealer, you should contact us at any of the address, email address, facsimile number or telephone number shown on this document. Enquiries to us should be directed to our Production Manager.
10. The benefits given to you by our warranty are in addition to other rights and remedies of a consumer under a law in relation to the goods or services to which our warranty relates.
11. Our products come with guarantees that cannot be excluded under the Australian Consumer Law. You are entitled to a replacement or refund for a major failure and compensation for any other reasonably foreseeable loss or damage. You are also entitled to have the goods repaired or replaced if the goods fail to be of acceptable quality and if failure does not amount to a major failure.
12. Any costs incurred by the customer or respective dealer in relation to transportation or freight will **NOT** be covered under the Greenfield Mowers Pty Ltd manufacturer's warranty.

Commercial Use

Greenfield commercial warranty covers owner operated machines used in commercial, institutional and contracting situations. All Greenfield ride-on mowers used for commercial use are guaranteed to be free of faulty workmanship and material only, for a period of three (3) months from date of sale to the original purchaser. This warranty does not cover machines hired out or machines used by staff in any of the aforementioned situations.

Exclusions to the Greenfield Mowers Pty Ltd (Greenfield) warranty on all machines are:

1. Fair wear and tear, V Belts, Tyres, Tubes, Blades, Blade Belts, Blade Holder, Brake Pads, Damage caused by Misuse, Neglect, Accident, use of non-genuine parts and repairs attempted by anyone other than an authorized Greenfield dealer.
2. The benefits conferred by the above warranty are in addition to all other rights and remedies in respect of the product which the customer has under existing laws in Australia and New Zealand.
3. Greenfield Mowers Pty Ltd, the manufacturer, reserves the right to change parts and specifications without notice.
4. To register for the thirty six (36) month extended warranty, please fill in the enclosed warranty/survey registration card. When we receive this card, you will receive in return a warranty acknowledgment.
5. Engine, PTO clutch, and battery warranty are covered by the respective manufacturers.

Warranty Registration Details

Please Record Your Reference

This record should be completed and held by the purchaser and presented should service under warranty be required. To register your warranty, please visit www.greenfield.com.au/product-registration/ or alternatively, complete and return the enclosed warranty card.

Salutation: Mr / Mrs / Ms / Dr First Name: _____ Initial: _____ Surname: _____

Address: _____ Suburb: _____

State: _____ Postcode: _____ Phone: _____ Dealer: _____

Email: _____ Purchase Date: / /

Model: _____ Serial #: _____

Notes

[illegible]