

GREENFIELD

Anniversary Models 8 & 11



Operating Instructions & Parts

GREENFIELD ANNIVERSARY MODEL

INSTRUCTIONS

BEFORE USING

FUEL TANK

Top with clean unleaded petrol. Make sure the petrol is free from impurities, particularly water.

CRANKCASE

Check oil level. Top up to the correct level. **DON'T OVERFILL.**

TYRES

Check pressure. All wheels must be equal at 20 PSI. **DON'T** over-inflate. Check rear wheel nuts periodically for tightness.

TO START

Disengage blade clutch fully (OUT). Start and allow the engine to fast idle for about 30 seconds. Release handbrake.

TO OPERATE

The patented Greenfield drive gives easy control and is very durable. A simple pivoted foot pedal controls forward, neutral and reverse. Increased toe or heel pressure provides speed variation as required. Reverse (heel pressure) can be used to slow the machine down, but sudden directional changes and/or wheel spinning should be avoided.

TO STOP

Disengage blade clutch fully (OUT). Apply handbrake. Allow engine to idle for about 30 seconds to cool down. Then switch off.

MAINTENANCE

CRANKCASE

After first 5 HOURS operation, change engine oil whilst warm. Change every 15 HOURS thereafter and more often in heavy or dusty conditions. Use Castrol GTX Motor Oil. **DON'T OVERFILL** (refer engine leaflet).

AIR CLEANER

Clean regularly as per the engine instruction leaflet. Service more often in dusty conditions. Do not operate the engine without the air filter.

BELTS

Inspect the belts and replace if damaged.

BLADES

Check the condition of the blades and blade bolts. Replace if damaged or worn.

IMPORTANT: Use only genuine Greenfield parts. Part numbers are indicated on the machine.

PIVOTS

Lubricate with engine oil.

COOLING SYSTEM

Remove the blower housing and clean out the grass and debris to prevent overheating. Refer engine instructions.

BATTERY

(Electric Start)

Top with distilled water if needed. If externally charging, care is needed. Remove one battery terminal and **TRICKLE CHARGE ONLY** to avoid battery damage. Motor cycle batteries charge at 1 A.H. only.

CLEANING

Don't use a high pressure hose when cleaning. Water can penetrate bearings and cause failure.

WINTER SERVICE

We suggest that you return your Greenfield to your local Greenfield dealer in winter for an annual preventative maintenance check.

THANK YOU FOR BUYING GREENFIELD.

AUSTRALIAN MADE FOR TOUGH CONDITIONS.

Manufactured by:

GREENFIELD PRODUCTS PTY. LTD.

172 Ingram Rd, Acacia Ridge,
Brisbane, Qld. 4110. Australia.

Ph: (07) 345 6100. Telex AA 140819

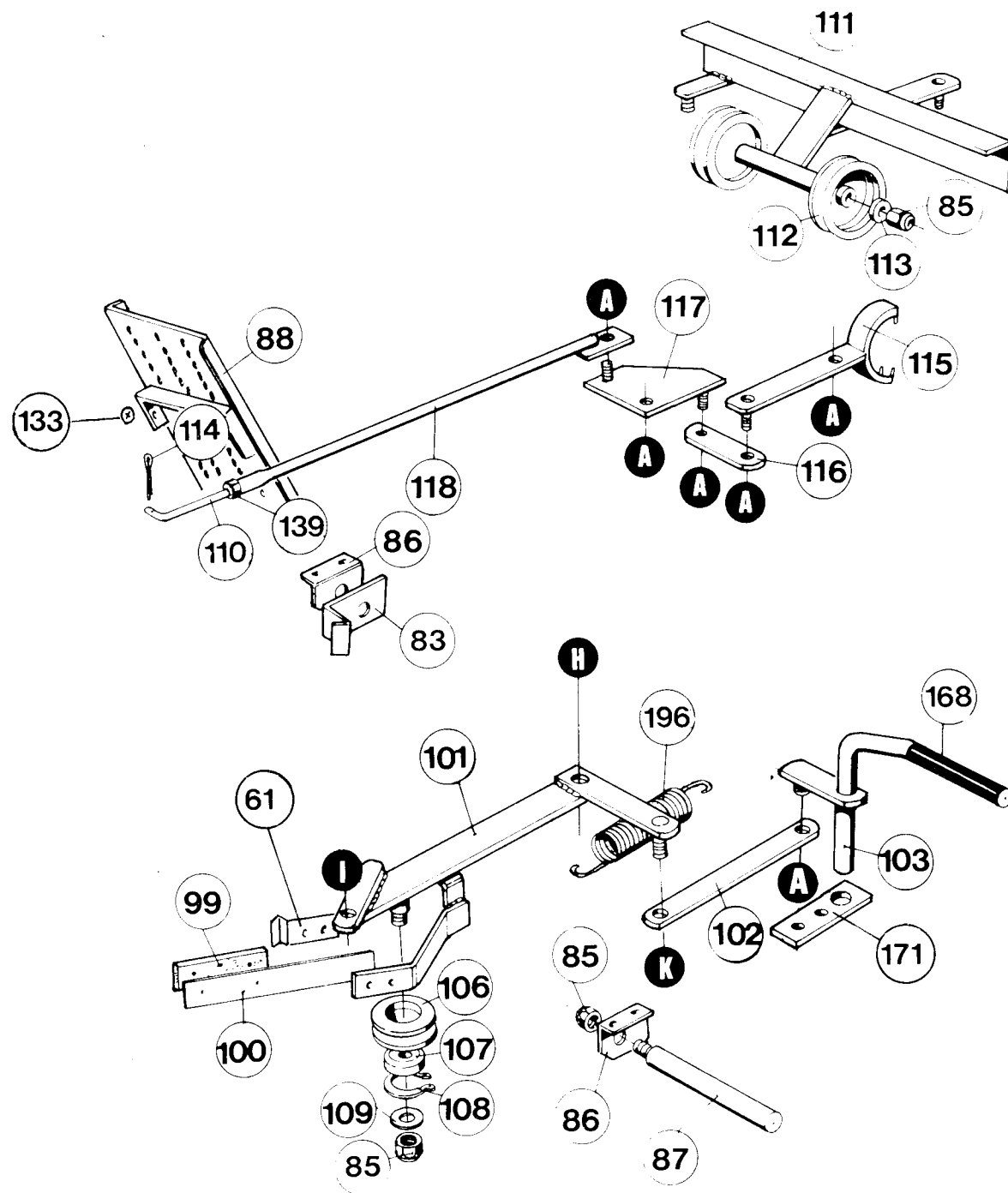
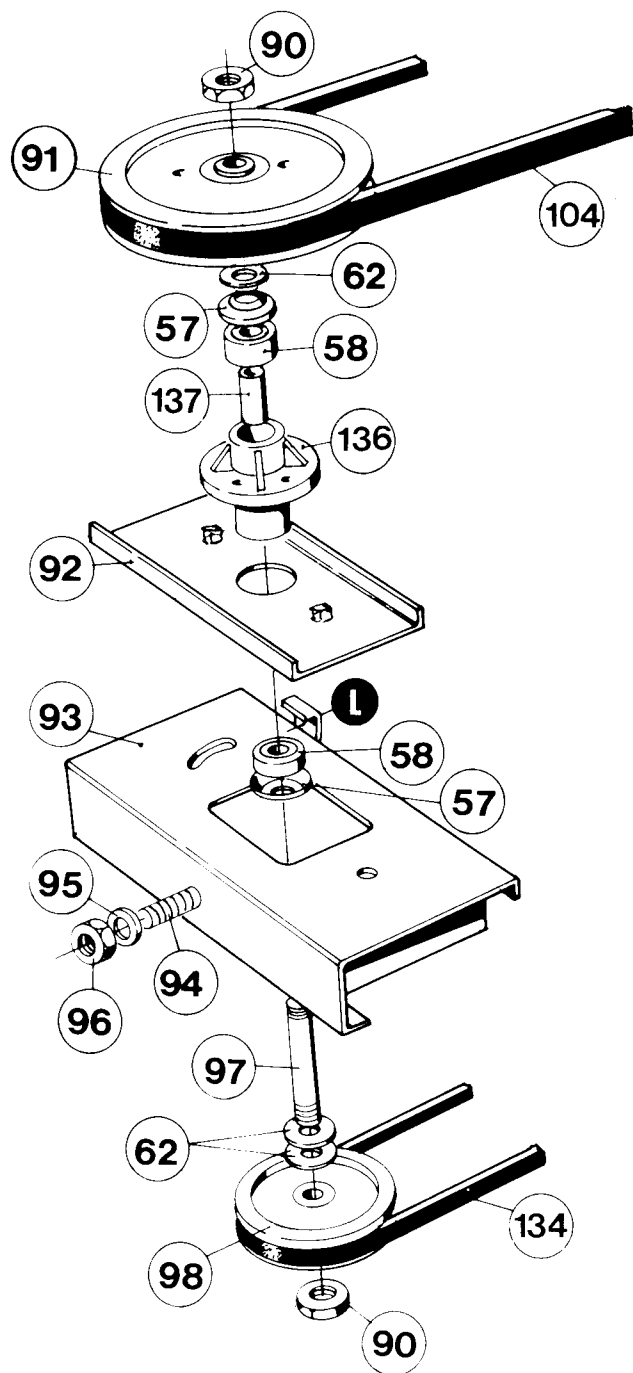
MAIN ILLUSTRATION PARTS SCHEDULE

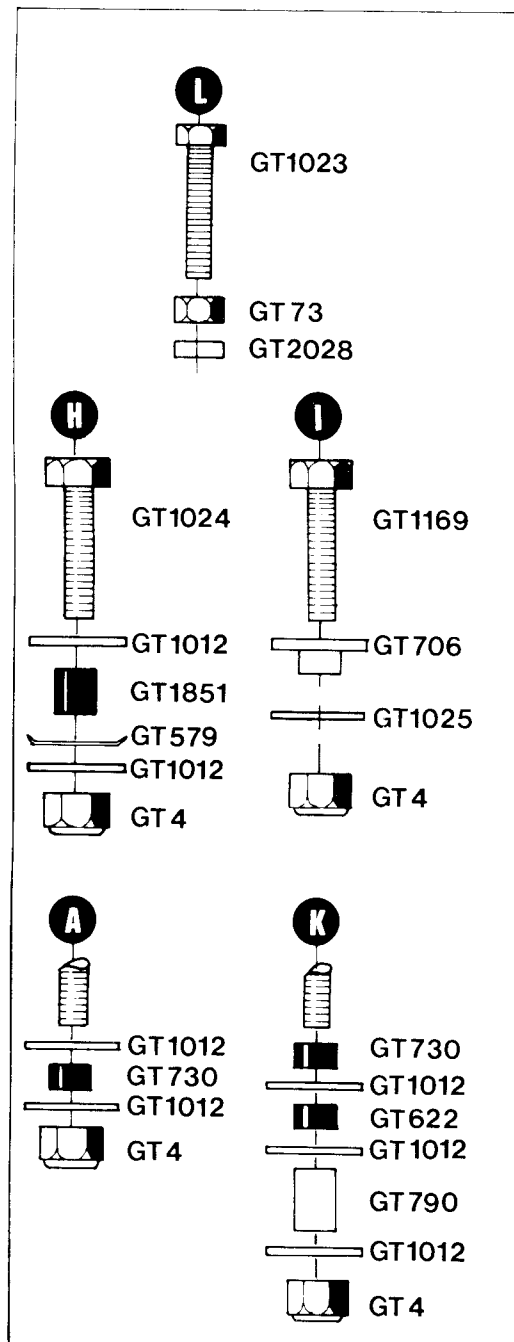
Part numbers also applicable
to 12-30 model

INDEX	PART NO.	MODEL	DESCRIPTION
1	GT 1697	8 & 11	SEAT COVER (seat pan not illustrated)
2	GT 8620	8 & 11	SEAT FRAME TOP
3	GT 8630	8 & 11	SEAT FRAME BOTTOM
4	GT 1884	8 & 11	STEERING WHEEL
5	GT 8770	8 manual	REAR COVER
5	GT 8760	8 & 11 elec.	REAR COVER
6	GT 8430	8 manual	STEERING COWL
6	GT 8420	8 & 11 elec.	STEERING COWL
7	GT 7510	8 & 11	SIDE COVER LEFT SIDE
7	GT 7511	8 & 11	SIDE COVER RIGHT SIDE (not illustrated)
8	GT 8440	8	BONNET
8	GT 8450	11	BONNET
9	GT 7101	8 & 11	MAIN FRAME
10	GT 7501	8 & 11	STEERING SUPPORT
11	GT 7250	8	AXLE BEAM
11	GT 7260	11	AXLE BEAM
12	GT 7990	8 & 11	FRONT PLATE
13	GT 7210	8 & 11	HOOD
14	GT 441	8	CUTTER DECK
14	GT 1885	11	CUTTER DECK
15	GT 891	8 & 11	STONE DEFLECTOR
16	GT 1340	8 & 11	REAR TYRE (tube GT 1341 not illustrated)
17	GT 410	8 & 11	REAR WHEEL HUB
18	GT 7110	8 & 11	BRACE
19	GT 7103	8 & 11	SIDE PLATE LEFT SIDE
19	GT 7104	8 & 11	SIDE PLATE RIGHT SIDE (not illustrated)

INDEX	PART NO.	MODEL	DESCRIPTION
20	GT 7780	8 & 11	TOP LINK LEFT SIDE
20	GT 7790	8 & 11	TOP LINK RIGHT SIDE (not illustrated)
21	GT 7406	8 & 11	BOTTOM LINK
22	GT 8490	8 & 11	CHAIN GUARD FRONT
23	GT 7404	8 & 11	LIFTING SIDE PLATE LEFT HAND
23	GT 7405	8 & 11	LIFTING SIDE PLATE RIGHT HAND (not illustrated)
24	GT 8480	8 & 11	CHAIN GUARD REAR
25	GT 7111	8 & 11	REAR PANEL
26	GT 7130	8 & 11	TOWBAR
27	GT 8417	8 & 11	MATTING
28	GT 8416	8 & 11	SUPPORT
29	GT 7014	8 & 11	BATTERY
30	GT 8402	8 & 11	INSULATION STRIP
31	GT 8403	8 & 11	CLAMP
32	GT 7540	8 & 11	ADJUSTER SUPPORT
54	GT 371	8 & 11	V BELT - DRIVE
55	GT 7407	8 & 11	LINK
56	GT 8260	8 & 11	BELT GUIDE
57	GT 589	8 & 11	BEARING SHIELD
58	GT 395	8 & 11	BEARING
59	GT 400	8 & 11	BEARING HOUSING
60	GT 7079	8 & 11	SPACER
62	GT 635	8 & 11	SHIELD SPACER
63	GT 8205	8 & 11	WIPER BLADE
64	GT 8220	8	CUTTER DISC & SPINDLE
64	GT 8230	11	CUTTER DISC & SPINDLE
65	GT 2104	8 & 11	CUTTER BLADES
66	GT 1453	8 & 11	FRONT TYRE (tube GT 1454 not illustrated)
67	GT 413	8 & 11	FRONT WHEEL HUB
68	GT 628	8 & 11	AXLE COLLAR
69	GT 520	8 & 11	GRUB SCREW
70	GT 8240	8 & 11	L.H. SIDE PLATE - CUTTER DECK
70	GT 8250	8 & 11	R.H. SIDE PLATE (not illustrated)
71	GT 8206	8 & 11	BRACKET
72	GT 1854	8 & 11	V IDLER PULLEY
73	GT 8270	8 & 11	BRACKET L.H.
73	GT 8280	8 & 11	BRACKET R.H. (not illustrated)
74	GT 1364	8 & 11	JOCKEY WHEEL (Hub cap GT 1365 not illustrated)
75	GT 7100	8 & 11	PULLEY
76	GT 2003	8 & 11	NUT
77	GT 1760	8 & 11	NYLON BUTTON
78	GT 2013	8 & 11	BELT GUIDE
79	GT 1069	8 & 11	BOLT
80	GT 2021	8 & 11	SPRING WASHER
81	GT 1500	8 & 11	KEY
82	GT 1750	8 & 11	WASHER

INDEX	PART NO.	MODEL	DESCRIPTION
84	GT 7022	8 & 11	ENGINE PULLEY
85	GT 4	8 & 11	NYLOC NUT
89	GT 7670	8 & 11	FOOT PEDAL L.H.
105	GT 7117	8 & 11	SUMP GUARD
109	GT 1012	8 & 11	WASHER
126	GT 7330	8 & 11	KING PIN R.H.
134	GT 120	8 & 11	V BELT - CUTTER
153	GT 7052	8 & 11	STEERING BUSH
154	GT 7025	8 & 11	STEERING TUBE
155	GT 7024	8 & 11	STEERING SHAFT
156	GT 7506	8 & 11 elec.	SWITCH BRACKET
157	GT 1008	8 & 11	V IDLER PULLEY
158	GT 7550	8 & 11	NOTCH BAR
159	GT 7308	8 & 11	BRACKET
160	GT 7507	8 & 11	BRACKET
161	GT 7109	8 & 11	SEAT SUPPORT
162	GT 7880	8 & 11	BAR
163	GT 7850	8 & 11	HEIGHT ADJUSTING LEVER
164	GT 7840	8 & 11	TRANSFER SHAFT
165	GT 8190	8 & 11	ADJUSTING RACK
166	GT 7560	8 & 11	MOUNTING BRACKET
167	GT 2019	8 & 11	FASTENER
168	GT 8413	8 & 11	GRIP
169	GT 7071	8 & 11	SPRING
170	GT 7217	8 & 11	SEAT SUPPORT
172	GT 1567	8 & 11	SPRING WASHER
173	GT 7085	8 & 11	CHAIN
174	GT 7505	8 & 11	THROTTLE LEVER
175	GT 2025	8 & 11	KNOB
176	GT 8965	8 & 11	THROTTLE CABLE
177	GT 7504	8 & 11	BRACKET
178	GT 8408	8 & 11	GRILLE
179	GT 8470	8 & 11	BONNET ROD
180	GT 1035	8 & 11	WASHER
181	GT 1020	8 & 11	NYLOC NUT
182	GT 8207	8 & 11	BRACKET
183	GT 7081	8 & 11	SPRING LEAF
184	GT 8340	8 & 11	STABILIZER BAR
185	GT 7013	8 & 11	SPRING
186	GT 7730	8 & 11	PARK BRAKE LEVER
187	GT 7740	8 & 11	PARK BRAKE LUG
188	GT 7403	8 & 11	PARK BRAKE BRACKET
190	GT 2004	8 & 11	PUSH ON FASTENER
191	GT 525	8 & 11	KNOB
192	GT 7015	8 & 11	BONNET STRAP
193	GT 8412	8 & 11	CLAMP
194	GT 4	8 & 11	NYLOC NUT
195	GT 7080	8 & 11	SPRING
196	GT 1554	8 & 11	SPRING
197	GT 518	8 & 11	KEY
198	GT 8964	8 & 11 elec.	ELECTRIC WIRING
199	GT 1915	8 & 11 elec.	STARTER SWITCH
200	GT 1997	8 & 11 elec.	KEY
202	GT 194	8 & 11	NUT

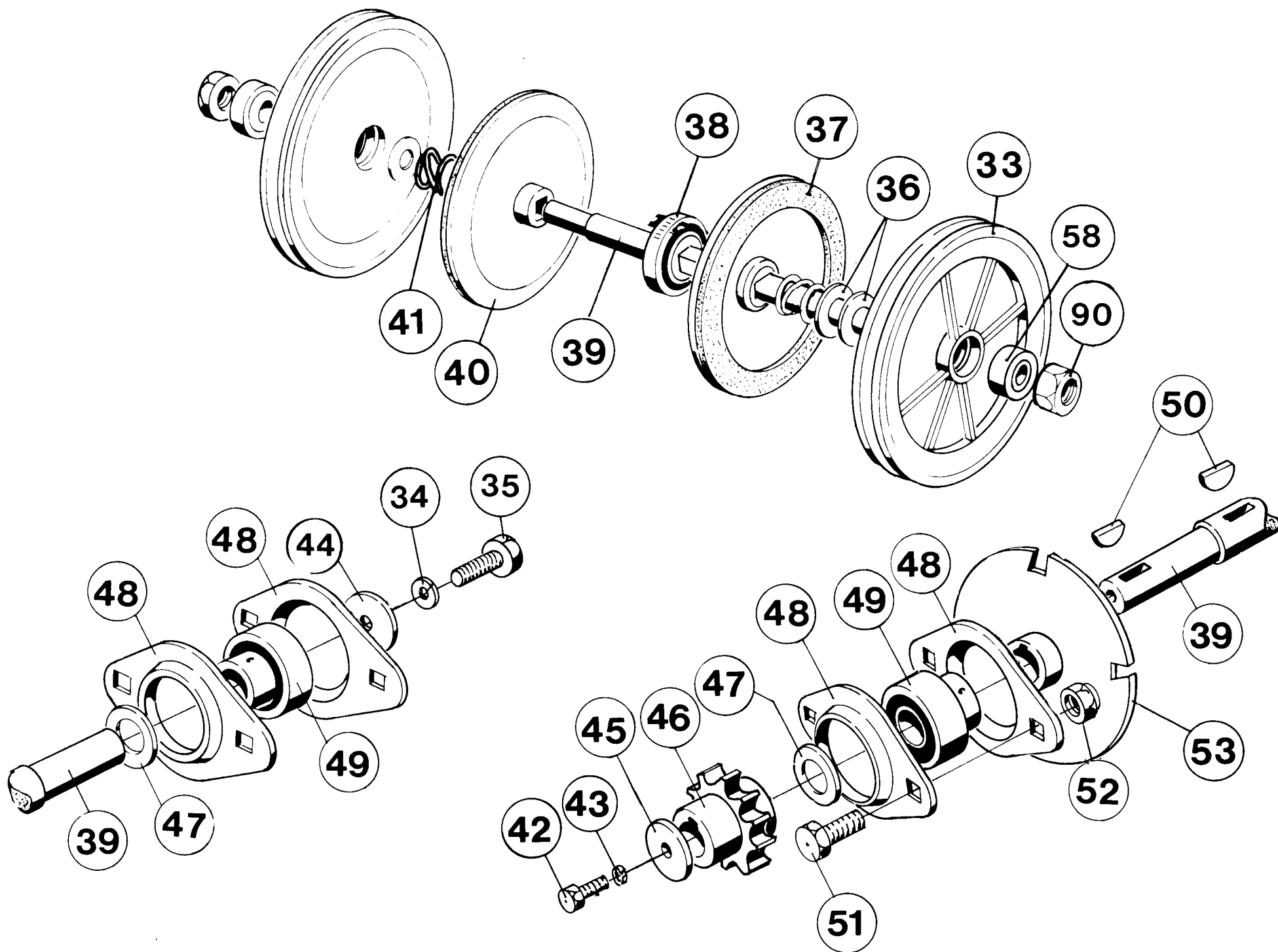


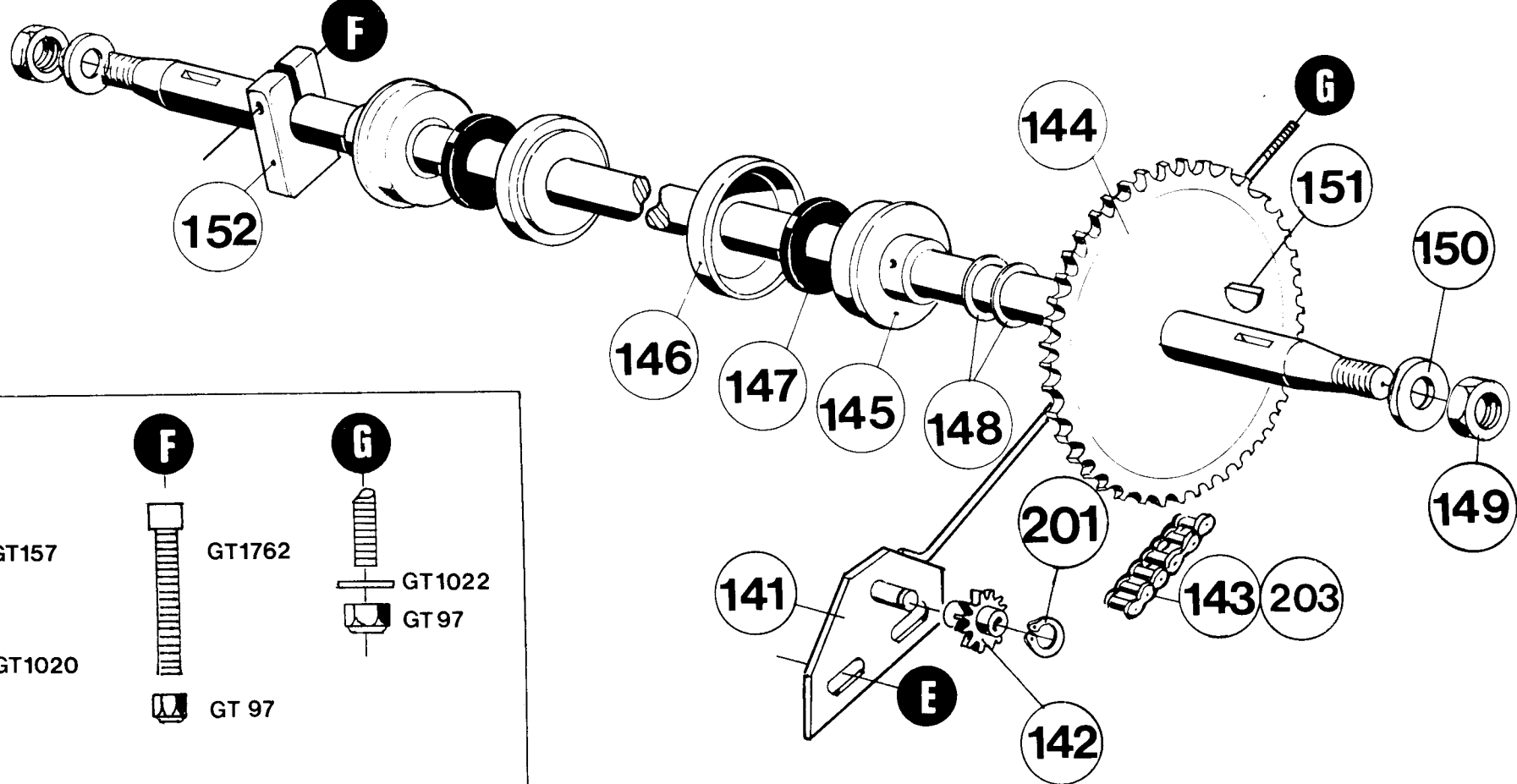


REDUCTION PULLEY ASSY. DRIVE CLUTCH LINKAGES CUTTER CLUTCH

INDEX	PART NO.	MODEL	DESCRIPTION
57	GT 589	8 & 11	BEARING SHIELD
58	GT 395	8 & 11	BEARING
61	GT 7214	8 & 11	BELT GUIDE
62	GT 635	8 & 11	SHIELD SPACER
83	GT 7213	8 & 11	BELT GUIDE
85	GT 4	8 & 11	NYLOC NUT
86	GT 7212	8 & 11	BRACKET
87	GT 7042	8 & 11	SHAFT
88	GT 7650	8 & 11	FOOT PEDAL R.H.
90	GT 347	8 & 11	NUT
91	GT 7020	8 & 11	PULLEY
92	GT 7230	8 & 11	SLIDE PLATE
93	GT 7170	8 & 11	BACKING PLATE
94	GT 7059	8 & 11	PIVOT BOLT
95	GT 1562	8 & 11	SPRING WASHER
96	GT 1017	8 & 11	NUT
97	GT 7023	8 & 11	SPINDLE
98	GT 7019	8 & 11	PULLEY
99	GT 7408	8 & 11	BRAKE PAD
100	GT 7070	8 & 11	SPRING STRIP
101	GT 7430	8 & 11	CLUTCH ARM
102	GT 7302	8 & 11	LINK
103	GT 7460	8 & 11	CLUTCH LEVER

INDEX	PART NO.	MODEL	DESCRIPTION
104	GT 1985	8 & 11	V BELT
106	GT 7027	8 & 11	IDLER PULLEY
107	GT 397	8 & 11	BEARING
108	GT 2005	8 & 11	CIRCLIP
109	GT 1012	8 & 11	WASHER
110	GT 7310	8 & 11	ADJUSTING LINK
111	GT 7520	8 & 11	BRACKET
112	GT 1009	8 & 11	FLAT IDLER PULLEY
113	GT 65	8 & 11	WASHER
114	GT 167	8 & 11	SPLIT PIN
115	GT 7570	8 & 11	CLUTCH FORK
116	GT 7309	8 & 11	LINK
117	GT 7590	8 & 11	PIVOT PLATE
118	GT 7620	8 & 11	CLUTCH ROD
133	GT 580	8 & 11	PUSH ON FASTENER
134	GT 120	8 & 11	V BELT - CUTTERS
136	GT 417	8 & 11	BEARING HOUSING
137	GT 241	8 & 11	SPACER
139	GT 36	8 & 11	NUT
168	GT 8413	8 & 11	GRIP
171	GT 7301	8 & 11	LOCATION PLATE
196	GT 1554	8 & 11	SPRING





REAR AXLE

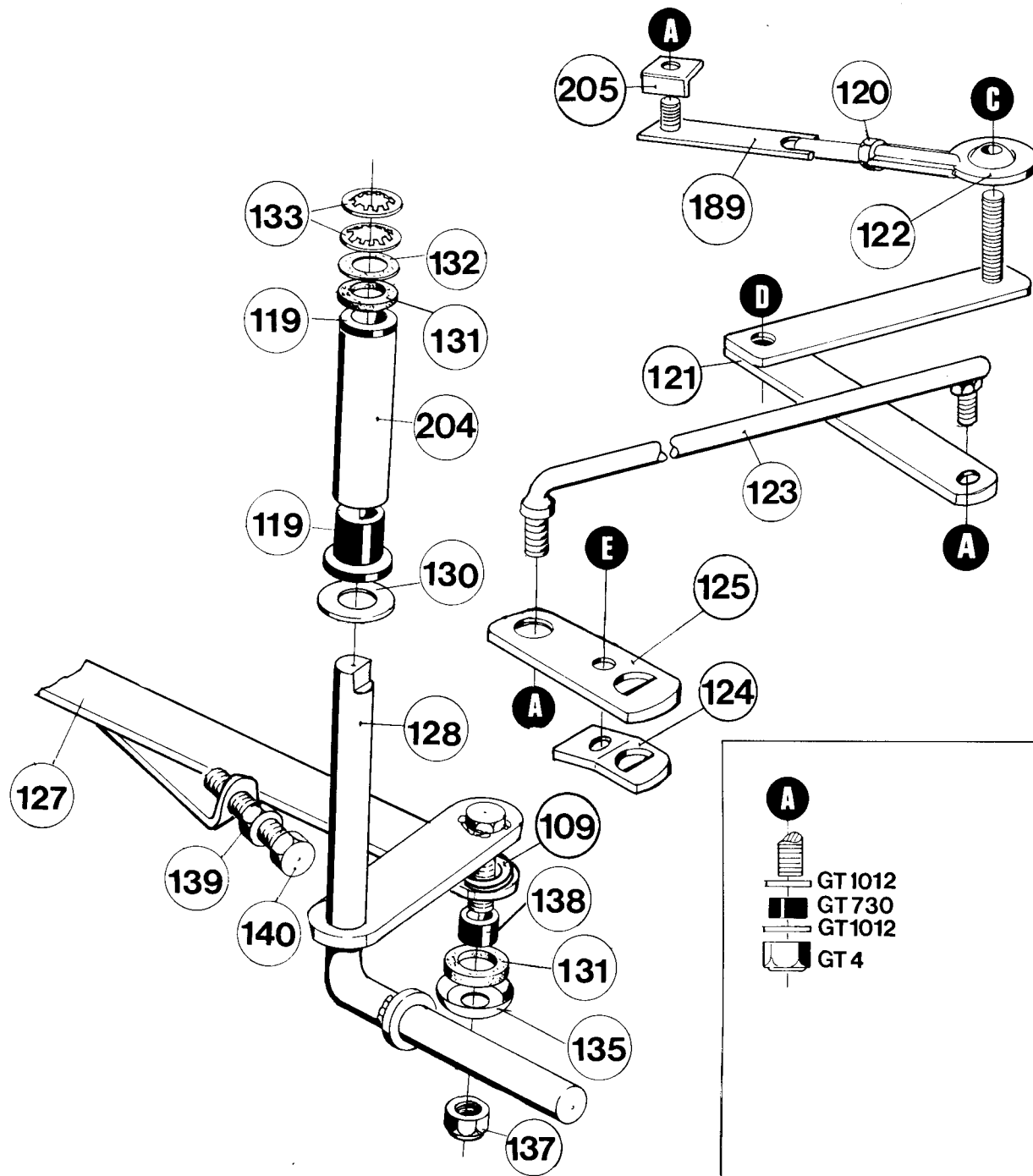
INDEX	PART NO.	MODEL	DESCRIPTION
141	GT 7750	8 & 11	CHAIN ADJUSTER
142	GT 7976	8 & 11	IDLER SPROCKET
143	GT 500	8 & 11	CHAIN
144	GT 7060	8 & 11	AXLE & SPROCKET
145	GT 1623	8 & 11	BEARING
146	GT 1812	8 & 11	SHIELD
147	GT 7066	8 & 11	SEAL
148	GT 7078	8 & 11	SPACER
149	GT 177	8 & 11	NUT
150	GT 1534	8 & 11	WASHER
151	GT 516	8 & 11	KEY
152	GT 7065	8 & 11	AXLE CLAMP
201	GT 2010	8 & 11	CIRCLIP
203	GT 501	8 & 11	CHAIN CONNECTING LINK

DRIVE CLUTCH

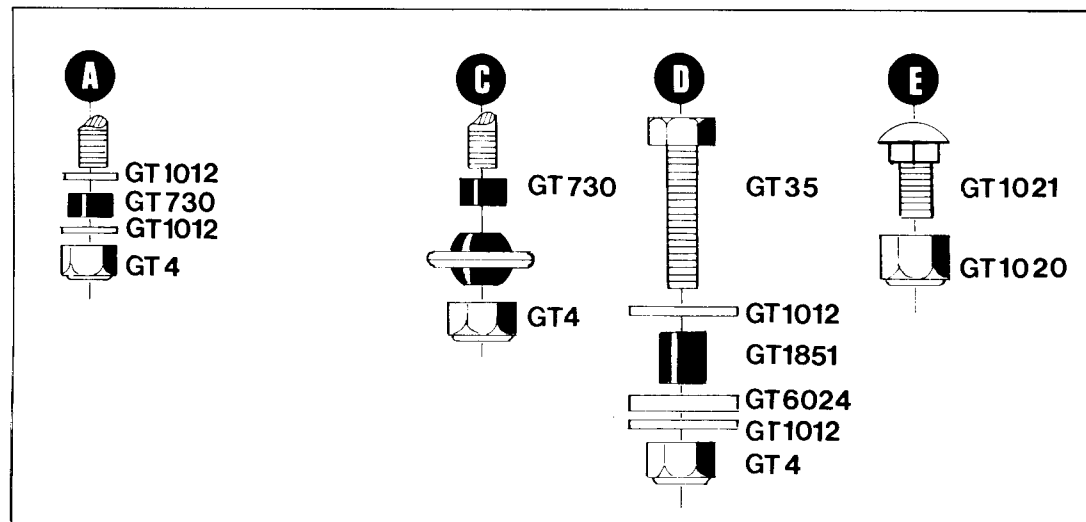
INDEX	PART NO.	MODEL	DESCRIPTION
33	GT 401	8 & 11	DRIVE PULLEYS
34	GT 1249	8 & 11	SPRING WASHER
35	GT 1759	8 & 11	SET SCREW
36	GT 541	8 & 11	SHIMS
37	GT 567	8 & 11	CLUTCH LINING
38	GT 927	8 & 11	THRUST BEARING
39	GT 7016	8 & 11	CLUTCH DRIVE SHAFT
40	GT 404	8 & 11	CLUTCH PLATE
41	GT 357	8 & 11	SPRING
42	GT 1759	8 & 11	SET SCREW
43	GT 1764	8 & 11	SPRING WASHER

44	GT 7306	8 & 11	WASHER
45	GT 7305	8 & 11	WASHER
46	GT 7012	8 & 11	SPROCKET
47	GT 7304	8 & 11	SHIM
48	GT 7017	8 & 11	BEARING PLATE
49	GT 7010	8 & 11	BEARING
50	GT 517	8 & 11	KEY
51	GT 1052	8 & 11	SET SCREW
52	GT 97	8 & 11	NYLOC NUT
53	GT 7480	8 & 11	PARKING BRAKE DISC
58	GT 395	8 & 11	BEARING
90	GT 347	8 & 11	NUT

KING PIN & STEERING LINKAGE



INDEX	PART NO.	MODEL	DESCRIPTION
109	GT 1012	8 & 11	WASHER
119	GT 1179	8 & 11	NYLON BUSH
120	GT 78	8 & 11	NUT
121	GT 7890	8 & 11	STEERING LINK
122	GT 1626	8 & 11	TIE ROD END
123	GT 8670	8 & 11	DRAG LINK
124	GT 7205	8 & 11	LOCKING TAG
125	GT 7207	8 & 11	STEERING ARM
127	GT 7490	8	TIE ROD
127	GT 7370	11	TIE ROD
128	GT 7320	8 & 11	KING PIN L.H.
130	GT 1002	8 & 11	WASHER
131	GT 534	8 & 11	FELT SEAL
132	GT 1070	8 & 11	FIBRE WASHER
133	GT 580	8 & 11	PUSH ON FASTENER
135	GT 585	8 & 11	SEAL RETAINER
138	GT 622	8 & 11	PIVOT BUSH
139	GT 36	8 & 11	NUT
140	GT 1169	8 & 11	BOLT
189	GT 7930	8 & 11	STEERING LINK
204	GT 1327	8 & 11	KING PIN COVER
205	GT 7508	8 & 11	STEERING STOP



GREENFIELD ANNIVERSARY MODEL

MODIFICATIONS TO 8 H.P. MODELS AND 12/30 MODEL BUILT AFTER JANUARY 1988.

REFER TO PAGES 2 & 3

<u>INDEX</u>	<u>PART NO.</u>	<u>MODEL</u>	<u>DESCRIPTION</u>
1	GT 8060	8	SEAT
1	GT 8063	12-30	SEAT
14	GT 8201	8	CUTTER DECK
14	GT 8202	12-30	CUTTER DECK
19	GT 7514	8 & 12-30	SIDE PLATE L.H.
	GT 7515	8 & 12-30	SIDE PLATE R.H.
25	GT 7216	8 & 12-30	REAR PANEL
26	GT 1718	8 & 12-30	TOWBAR
29	GT 7099	8 & 12-30	BATTERY
59	GT 8051	12-30	BEARING HOUSING
60	GT 8053	8 & 12-30	SPACER
67	GT 7093	8 & 12-30	FRONT WHEEL HUB
68	GT 7009	8 & 12-30	AXLE COLLAR
126	GT 7335	8 & 12-30	KING PIN R.E.
157	GT 7965	8 & 12-30	V IDLER PULLEY

REFER TO PAGES 4 & 5

88	GT 8895	12-30	FOOT PEDAL R.E.
118	GT 8979	12-30	CLUTCH ROD COMPLETE

REFER TO PAGES 6 & 7

141	GT 7770	8 & 12-30	CHAIN ADJUSTER
144	GT 7084	8 & 12-30	AXLE & SPROCKET
145	GT 390	8 & 12-30	BEARING
146	GT 7083	8 & 12-30	BEARING PLATE
152	GT 7032	8 & 12-30	AXLE CLAMP

REFER TO PAGE 8

121	GT 7920	8 & 12-30	PIVOT PLATE
123	GT 8155	8 & 12-30	DRAG LINK
124	GT 7208	8 & 12-30	LOCKING TAG
125	GT 8138	8 & 12-30	STEERING ARM
128	GT 7325	8 & 12-30	KING PIN L.E.

NOT ILLUSTRATED

GT 7054	8 & 12-30	STEERING BUSH
---------	-----------	---------------

EMERGENCY BRAKE NOT ILLUSTRATED

GT 7995	8 & 12-30	TOP BRAKE SHOE UNIT
GT 7996	8 & 12-30	BOTTOM BRAKE SHOE UNIT
GT 7021	8 & 12-30	PARKING BRAKE DRUM

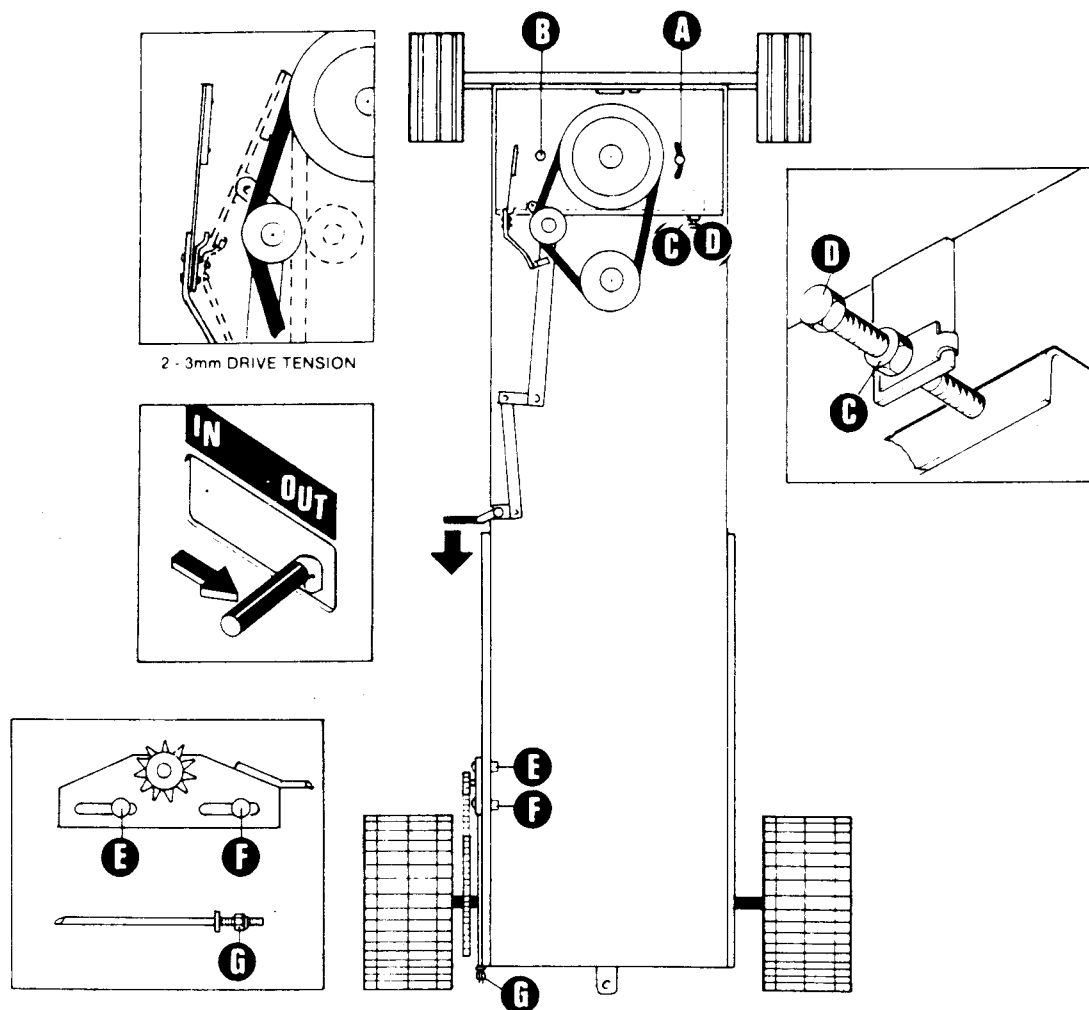
GREENFIELD ANNIVERSARY MODE

— MODIFICATIONS TO 8 H.P. MODELS AND 12/30 MODEL BUILT AFTER JANUARY 1988.

— REFER TO PAGES 2 & 3

INDEX	PART NO.	MODEL	DESCRIPTION	INDEX	PART NO.	MODEL	DESCRIPTION
— 1	GT 8060	8	SEAT	69	GT 1148	8 &	GRUB SCREW
— 1	GT 8063	12-30	SEAT			12-30	
5	GT 8390	8 man	REAR COVER	73	GT 8210	8 &	BRACKET L.H.
5	GT 8380	8elec	REAR COVER			12-30	
		& 12-30		73	GT 8211	8 &	BRACKET R.H.
8	GT 8660	12-30	BONNET			12-30	
9	GT 7601	8 &	MAIN FRAME	89	GT 7519	8	RUNNING BOARD L
		12-30		— 126	GT 7335	8 + 12-30	KING PIN R.H.
10	GT 7604	8 &	STEERING	134	GT 120A	8	V BELT CUTTER
		12-30	SUPPORT	134	GT 2200A	12-30	V BELT CUTTER
— 14	GT 8201	8	CUTTER DECK	155	GT 7940	8 &	STEERING SHAFT
— 14	GT 8202	12-30	CUTTER DECK			12-30	
15	GT 8125	8 &	STONE	— 157	GT 7965	8 &	V IDLER PULLEY
		12-30	DEFLECTOR			12-30	
— 19	GT 7514	8 &	SIDE PLATE L.H.	160	GT 7605	8 &	BRACKET
		12-30				12-30	
—	GT 7515	8 &	SIDE PLATE R.H.	161	GT 7602	8 &	SEAT SUPPORT
		12-30				12-30	
22	GT 8410	8 &	CHAIN GUARD	165	GT 8195	8 &	ADJUSTING RACK
		12-30	FRONT			12-30	
24	GT 8690	8 &	CHAIN GUARD	166	GT 8780	8 &	MOUNTING BRACKE
		12-30	REAR			12-30	
— 25	GT 7216	8 &	REAR PANEL	168	GT 1565	8 &	KNOB
		12-30				12-30	
— 26	GT 1718	8 &	TOWBAR	170	GT 7603	8 &	SEAT SUPPORT
		12-30				12-30	
27	GT 7606	8 &	MATTING	178	GT 8408	8	GRILLE
		12-30		178	GT 8602	12-30	GRILLE
28	GT 7135	8 &	SUPPORT	179	GT 8470	8 &	BONNET ROD
		12-30				12-30	
— 29	GT 7099	8 &	BATTERY	180	GT 1050	8 &	WASHER
		12-30				12-30	
30	GT 7608	8 &	INSULATION	181	GT 1020	8 &	NYLOC NUT
		12-30	STRIP			12-30	
	GT 7609	8 &	INSULATION	195	GT 8030	8 &	SPRING
		12-30	STRIP			12-30	
31	GT 7615	8 &	CLAMP FOR	NOT ILLUSTRATED			
		12-30	BATTERY	GT 7637	8 &	CROSS BRACE BAF	
55	GT 7409	8 &	LINK L.H.			12-30	
		12-30		GT 7125	8 &	BATTERY	
	GT 7410	8 &	LINK R.H.			12-30	
		12-30		GT 7613	12-30	RUNNING BOARD	
— 59	GT 8051	12-30	BEARING HOUSING	GT 7612	12-30	RUNNING BOARD	
— 60	GT 8053	8 &	SPACER	GT 7619	8	RUNNING BOARD	
		12-30					
— 67	GT 7093	8 &	FRONT WHEEL HUB				
		12-30					
— 68	GT 7009	8 &	AXLE COLLAR				
		12-30					

BELT & CHAIN ADJUSTING PROCEDURES FOR THE GREENFIELD ANNIVERSARY MODELS.



The cutter clutch mechanism will provide self adjustment for a considerable period after which further adjustment is achieved by the following procedure:-

REDUCTION PULLEY 'V' BELT ADJUSTMENT PROCEDURE

1. Stop engine, engage park brake and disengage cutters.
2. Lower cutter deck and raise front wheels.
3. Remove pulley guard to expose pulleys.
4. Loosen pivot bolts (A) & (B) and check mechanism slides freely.
5. Loosen locknut (C) and turn set screw (D) 3 full turns.
6. Engage cutter clutch and tighten nuts (A) & (B) then tighten locknut (C).
7. Disengage cutter clutch and replace pulley guard.
8. To check that cutters are disengaging, start engine and operate cutter clutch.
9. Should cutters not disengage, repeat above procedure and release set screw (D) 1 full turn.

DRIVE CHAIN TENSIONING PROCEDURE

1. Stop engine and engage park brake.
2. Loosen nuts (E) & (F).
3. Turn nut (G) clockwise to eliminate excessive slack in chain. (IMPORTANT) do not over tighten chain.
4. Tighten nuts (E) & (F) firmly and check the chain tension again.
5. To check chain tension, lift with thumb and forefinger ensuring approximately 3mm movement in chain.



GREENFIELD PRODUCTS PTY. LTD.
P.O. BOX 155, ARCHERFIELD, Q. 4108
TELEPHONE: (07) 345 6100
FAX: (07) 344 1161

BELT CHANGING INSTRUCTIONS

DRIVE BELT

First the old belt must be removed:

- (a) Remove the seat and the rear cover.
- (b) Disconnect the coil spring (use hook tool).
- (c) Release leaf spring tension. Use a long screwdriver and approach from the left hand side of the machine.

To fit the new belt:

- (a) Put new belt in place.
- (b) Reverse the above.

N.B. The back of the belt is in contact with the idler pulley. Assist belt tension with a lever to take up a stiff new belt.

CUTTER BELT

To remove:

- (a) Disconnect the cutter deck coil springs.
- (b) Loosen the right hand idler pulley (on deck).
- (c) Replace belt.
- (d) Reverse the above.

N.B. No adjustment required.

REDUCTION PULLEY BELT

- (a) Release the drive belt **tension** only.
- (b) Loosen the reduction pulley adjusting bolt.
- (c) Loosen the reduction pulley mounting bolts.
- (d) Pivot the reduction pulley towards the centre of the machine and remove the belt.

TO REPLACE Reverse the above:

- (a) Replace belt.
- (b) Tighten the adjusting bolt until all the slack is taken out of the belt (cutter engaged).
- (c) Tighten the reduction pulley mounting bolts.
- (d) Check for operation then lock up the adjusting bolt.