

SP92

# GREENFIELD

**Anniversary 12-32**



## **Spare Parts & Instructions**

Greenfield Products Pty Ltd  
172 Ingram Rd, Acacia Ridge Q. 4110  
P.O. Box 155 Archerfield Q. 4108 Australia  
Fax (07) 344 1161 Phone (07) 345 6100

# Greenfield Anniversary 12-32

## Instructions

### BEFORE USING

#### Fuel Tank

Top with clean unleaded petrol. Make sure the petrol is free from impurities, particularly water.

#### Crankcase

Check oil level. Top up to the correct level. DON'T OVERFILL.

#### Tyres

Check pressure. All wheels must be equal at 20 PSI. DON'T over-inflate. Check rear wheel nuts periodically for tightness.

### TO START

Disengage blade clutch fully (OUT). Start and allow the engine to fast idle for about 30 seconds. Release handbrake.

### TO OPERATE

The patented Greenfield drive gives easy control and is very durable. A simple pivoted foot pedal controls forward, neutral and reverse. Increased toe or heel pressure provides speed variation as required. Reverse (heel pressure) can be used to slow the machine down, but sudden directional changes and/or wheel spinning should be avoided.

### TO STOP

Disengage blade clutch fully (OUT). Apply handbrake. Allow engine to idle for about 30 seconds to cool down. Then switch off.

### MAINTENANCE

#### Crankcase

After first 5 HOURS operation, change engine oil whilst warm. Change every 15 HOURS thereafter and more often in heavy or dusty conditions. Use CASTROL GTX Motor Oil. DON'T OVERFILL (refer engine leaflet).

#### Air Cleaner

Clean regularly as per the engine instruction leaflet. Service more often in dusty conditions. Do not operate the engine without the air filter in place.

#### Belts

Inspect the belts and replace if damaged.

#### Blades

Check the condition of the blades and blade bolts. Replace if damaged or worn.

IMPORTANT: Use only genuine Greenfield parts. Part numbers are indicated on the machine.

#### Pivots

Lubricate with engine oil.

#### Cooling System

Remove the blower housing and clean out the grass and debris to prevent overheating. Refer engine instructions.

#### Battery

(Electric Start)

Top with distilled water if needed. If externally charging, care is needed. Remove one battery terminal and TRICKLE CHARGE ONLY to avoid battery damage.

#### Cleaning

Don't use a high pressure hose when cleaning. Water can penetrate bearings and cause failure.

#### Winter Service

We suggest that you return your Greenfield to your local Greenfield dealer in winter for an annual preventative maintenance check.

### BELT CHANGING

#### Drive Belt

First the old belt must be removed.

- (a) Remove the seat and the rear cover.
- (b) Disconnect the drive belt tension spring (use hook tool).
- (c) Release leaf spring tension. Use a long screwdriver and approach from the left hand side of the machine.

To fit the new belt

- (a) Put new belt in place.
- (b) Reverse the above.

N.B. The back of the belt is in contact with the flat idler pulleys.

#### Cutter Belt

To remove

- (a) Disconnect the cutter deck coil springs.
- (b) Loosen the right hand idler pulley on cutter deck.
- (c) Replace belt.
- (d) Reverse the above.

N.B. No adjustment required.

#### Reduction Pulley Belt

- (a) Release the drive belt tension only.
- (b) Loosen the reduction pulley adjusting bolt.
- (c) Loosen the reduction pulley mounting bolts.
- (d) Pivot the reduction pulley unit towards the centre of the machine and remove the belt.

**To Replace.** Reverse the above.

- (a) Replace belt.
- (b) With cutter clutch engaged screw in the adjusting bolt until all the slack is taken out of the belt.
- (c) Tighten the reduction pulley mounting bolts.
- (d) Check for operation then lock up the adjusting bolt.

This diagram illustrates the exploded view of a 12 HP outboard motor, showing the main engine assembly and its various components. The parts are numbered 1 through 92, corresponding to the following list:

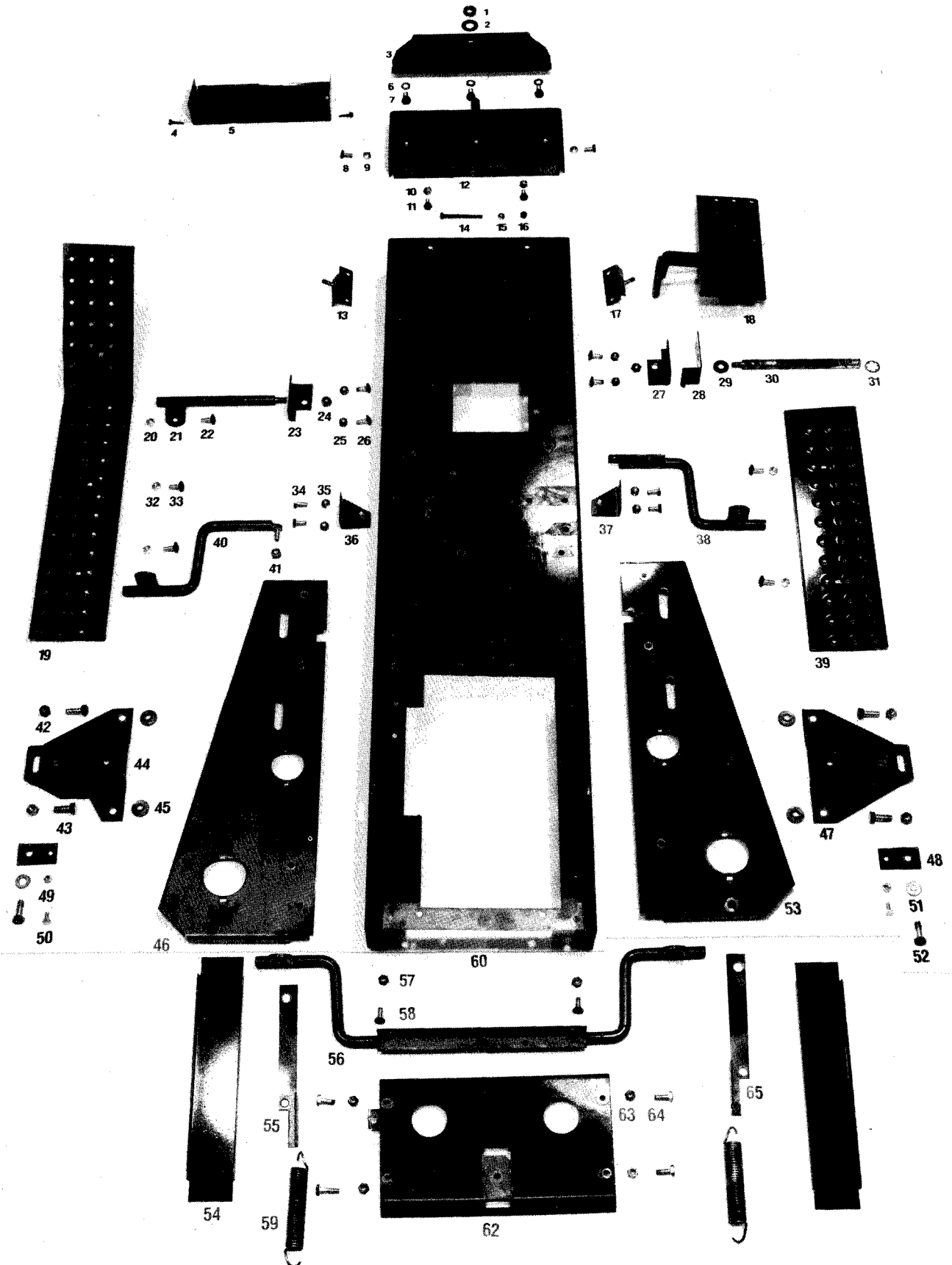
- 1
- 2
- 3
- 4
- 5
- 6
- 7
- 8
- 9
- 10
- 11
- 12
- 13
- 14
- 15
- 16
- 17
- 18
- 19
- 20
- 21
- 22
- 23
- 24
- 25
- 26
- 27
- 28
- 29
- 30
- 31
- 32
- 33
- 34
- 35
- 36
- 37
- 38
- 39
- 40
- 41
- 42
- 43
- 44
- 45
- 46
- 47
- 48
- 49
- 50
- 51
- 52
- 53
- 54
- 55
- 56
- 57
- 58
- 59
- 60
- 61
- 62
- 63
- 64
- 65
- 66
- 67
- 68
- 69
- 70
- 71
- 72
- 73
- 74
- 75
- 76
- 77
- 78
- 79
- 80
- 81
- 82
- 83
- 84
- 85
- 86
- 87
- 88
- 89
- 90
- 91
- 92

## Illustration 1

### ENGINE & CLUTCH

INDEX	PART No.	DESCRIPTION	INDEX	PART No.	DESCRIPTION
1	GT 8965	Throttle Cable	66	GT 4	Nut
2	GT 1044	Bolt	67	GT 1012	Washer
3	GT 83	Bolt	68	GT 1851	Bush
4	GT 85	Washer	69	GT 579	Washer
5	GT 73	Nut	70	GT 1012	Washer
6	GT 1035	Washer	71	GT 1024	Bolt
7	GT 7001	Engine 12 H/P	72	GT 4	Nut
8	GT 8625	Petrol Tank Support	73	GT 1012	Washer
9	GT 8414	Petrol Tank Straps	74	GT 7986	Brake Pad
10	GT 1480	Nut	75	GT 7215	Guide
11	GT 1026	Washer	76	GT 97	Nyloc Nut
12	GT 2034	Bolt	77	GT 1052	Screw
13	GT 8415	Petrol Tank Strap	78	GT 1012	Washer
14	GT 1301	Bolt	79	GT 7481	Spacer
15	GT 1249	Washer	80	GT 622	Bush
16	GT 1146	Nut	81	GT 4	Nut
17	GT 265	Washer	82	GT 7302	Link
18	GT 1252	Cable Clamp	83	GT 1554	Spring
19	GT 262	Screw	84	GT 730	Spacer
20	GT 1020	Nut	85	GT 1012	Washer
21	GT 1249	Washer	86	GT 4	Nut
22	GT 1035	Washer	87	GT 7470	Lever
23	GT 7505	Throttle Lever	88	GT 1565	Knob
24	GT 1035	Washer	89	GT 7301	Locking Plate
25	GT 1301	Bolt	90	GT 1020	Nut
26	GT 2026	Knob	91	GT 1455	Bolt
27	GT 1069	Bolt	92	GT 1985	Belt-Engine
28	GT 2021	Washer			
29	GT 1750	Washer			
30	GT 7041	Spacer			
31	GT 1500	Key			
32	GT 520	Grub Screw			
33	GT 7022	Pulley			
34	GT 7040	Spacer			
35	GT 8419	Hose			
36	GT 2024	Clamp			
37	GT 7002	Fuel Tank			
38	GT 1169	Set Screw			
39	GT 4	Nut			
40	GT 4	Nut			
41	GT 1012	Washer			
42	GT 347	Nut			
43	GT 7019	Pulley			
44	GT 1023	Screw			
45	GT 73	Nut			
46	GT 2028	Nut			
47	GT 7190	Base Plate			
48	GT 7230	Adjust Plate			
49	GT 635	Spacer			
50	GT 589	Bearing Shield			
51	GT 395	Bearing			
52	GT 417	Spindle Housing			
53	GT 241	Spacer			
54	GT 7020	Pulley			
55	GT 347	Nut			
56	GT 4	Nut			
57	GT 1024	Bolt			
58	GT 7023	Shaft			
59	GT 4	Nyloc Nut			
60	GT 1012	Washer			
61	GT 2005	Circlip			
62	GT 397	Bearing			
63	GT 7027	Pulley			
64	GT 609	Adaptor			
65	GT 7440	Engaging Arm			

# ILLUSTRATION 2



## Illustration 2

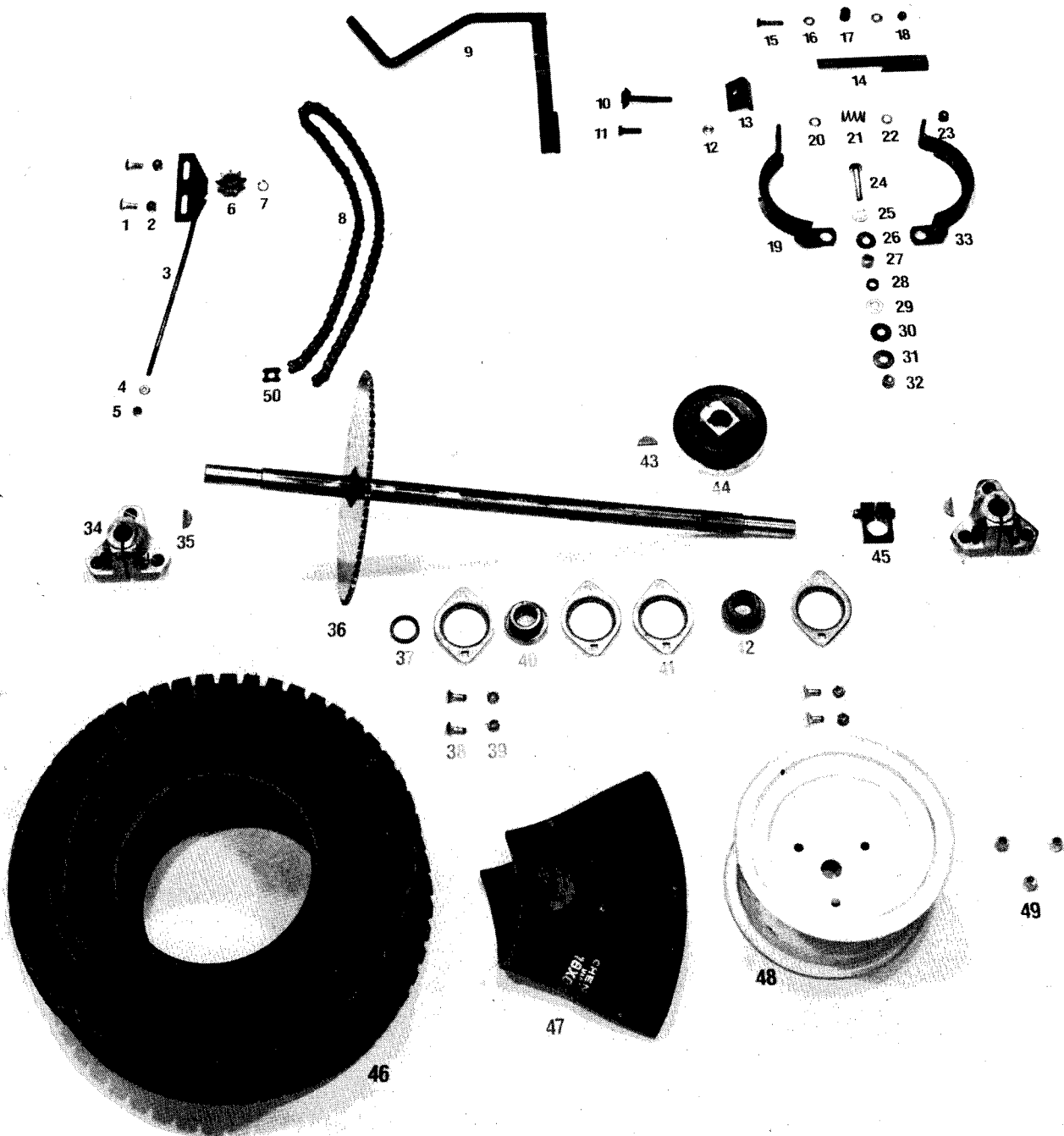
### CHASSIS PARTS

INDEX	PART No.	DESCRIPTION
1	GT 1017	Nut
2	GT 1002	Washer
3	GT 7211	Axle Beam Hood
4	GT 1239	Screw
5	GT 7117	Guard
6	GT 1035	Washer
7	GT 1455	Screw
8	GT 1455	Screw
9	GT 1020	Nut
10	GT 1020	Nut
11	GT 1455	Screw
12	GT 8830	Plate
13	GT 7160	Mounting Angle
14	GT 2013	Bolt
15	GT 17	Nut
16	GT 97	Nut
17	GT 7160	Mounting Angle
18	GT 7660	Footpedal
* 19	GT 7612	Running Board L.H.
20	GT 1020	Nyloc Nut
21	GT 7420	L.H. Bracket
22	GT 1021	Bolt
23	GT 7212	Bracket
24	GT 1020	Nut
25	GT 1020	Nut
26	GT 1021	Bolt
27	GT 7212	Bracket
28	GT 7213	Guide
29	GT 1012	Washer
30	GT 7042	Shaft
31	GT 580	Retainer
32	GT 1020	Nut
33	GT 1021	Bolt
34	GT 1455	Bolt
35	GT 1020	Nut
36	GT	Bracket L.H.
37	GT 7115	Bracket R.H.
38	GT 7690	Front Bracket R.H.
39	GT 7613	Running Board R.H.
40	GT 7720	Centre Bracket L.H.
41	GT 4	Nut
42	GT 4	Nut
43	GT 1169	Screw
44	GT 7404	Plate L.H.
45	GT 608	Bush
46	GT 7411	Plate L.H.
47	GT 7405	Plate R.H.
48	GT 7516	Locking Plate
49	GT 97	Nut
50	GT 1493	Screw
51	GT 1012	Washer
52	GT 1169	Screw
53	GT 7412	Plate R.H.
54	GT 8504	Stiffener
55	GT 7409	Spring Bracket L.H.
56	GT 7680	Rear Bracket
57	GT 1020	Nut
58	GT 1301	Screw
59	GT 1554	Spring
60	GT 7601	Frame
61	Deleted	
62	GT 7216	Tow Bar Bracket
63	GT 7119	Rear End Stiffener
64	GT 1760	Nylon Button
65	GT 7410	Spring Bracket R.H.

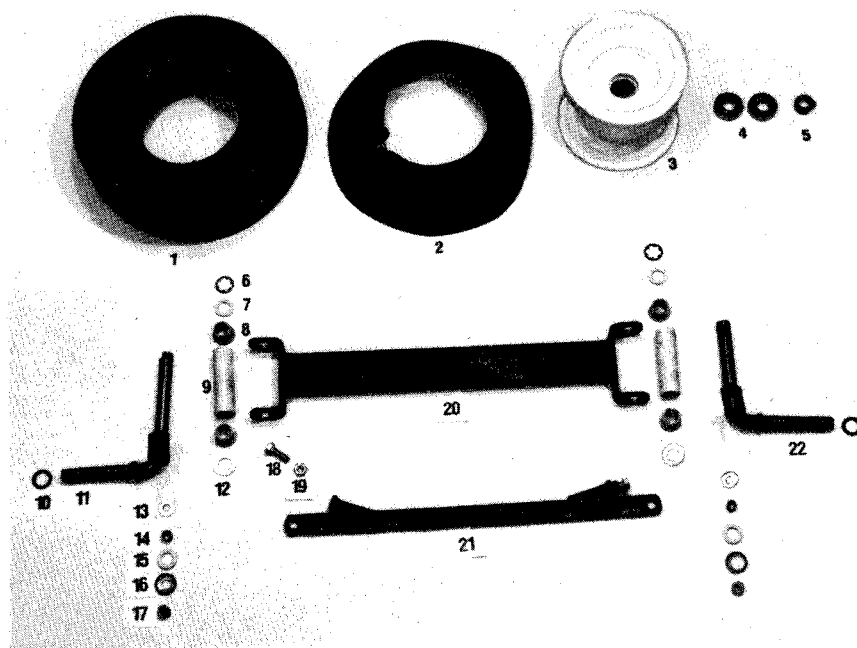
\* Not illustrated  
Heat shield GT 7518



# ILLUSTRATION 3



# ILLUSTRATION 4



### Illustration 3

#### REAR AXLE

INDEX	PART No.	DESCRIPTION
1	GT 124	Bolt
2	GT 97	Nut
* 3	GT 7165	Chain Adjustor
4	GT 1022	Washer
5	GT 97	Nut
6	GT 7976	Idler Sprocket
7	GT 2010	Circlip
8	GT 500	Chain
9	GT 7240	Brake Handle
10	GT 7360	Brake Bolt
11	GT 2033	Screw
12	GT 73	Nut
13	Deleted	
14	GT 7417	Brake
15	Deleted	
16	Deleted	
17	Deleted	
18	Deleted	
19	GT 7995	Top Brake Shoe
20	GT 1050	Washer
21	GT 7071	Spring
22	GT 1050	Washer
23	GT 1020	Nut
24	GT 1093	Bolt
25	GT 1012	Washer
26	GT 579	Washer
27	GT 1851	Pivot Bush
28	GT 730	Pivot Bush
29	GT 1012	Washer
30	GT 9407	Washer
31	GT 9407	Washer
32	GT 1106	Nut
33	GT 7996	Bottom Brake Shoe
34	GT 1625	Flange
35	GT 516	Key
36	GT 7033	Axle & Sprocket
37	GT 1501	Spacer
38	GT 124	Bolt
39	GT 97	Nut
40	GT 390	Bearing 1"
41	GT 7083	Bearing Plates
42	GT 390	Bearing 1"
43	GT 516	Key
44	GT 7021	Brake Drum
45	GT 7032	Axle Clamp
46	GT 1203	Tyre
47	GT 1535	Tube
48	GT 1624	Rear Hub
49	GT 2011	Nut
50	GT 501	Con Link

### Illustration 4

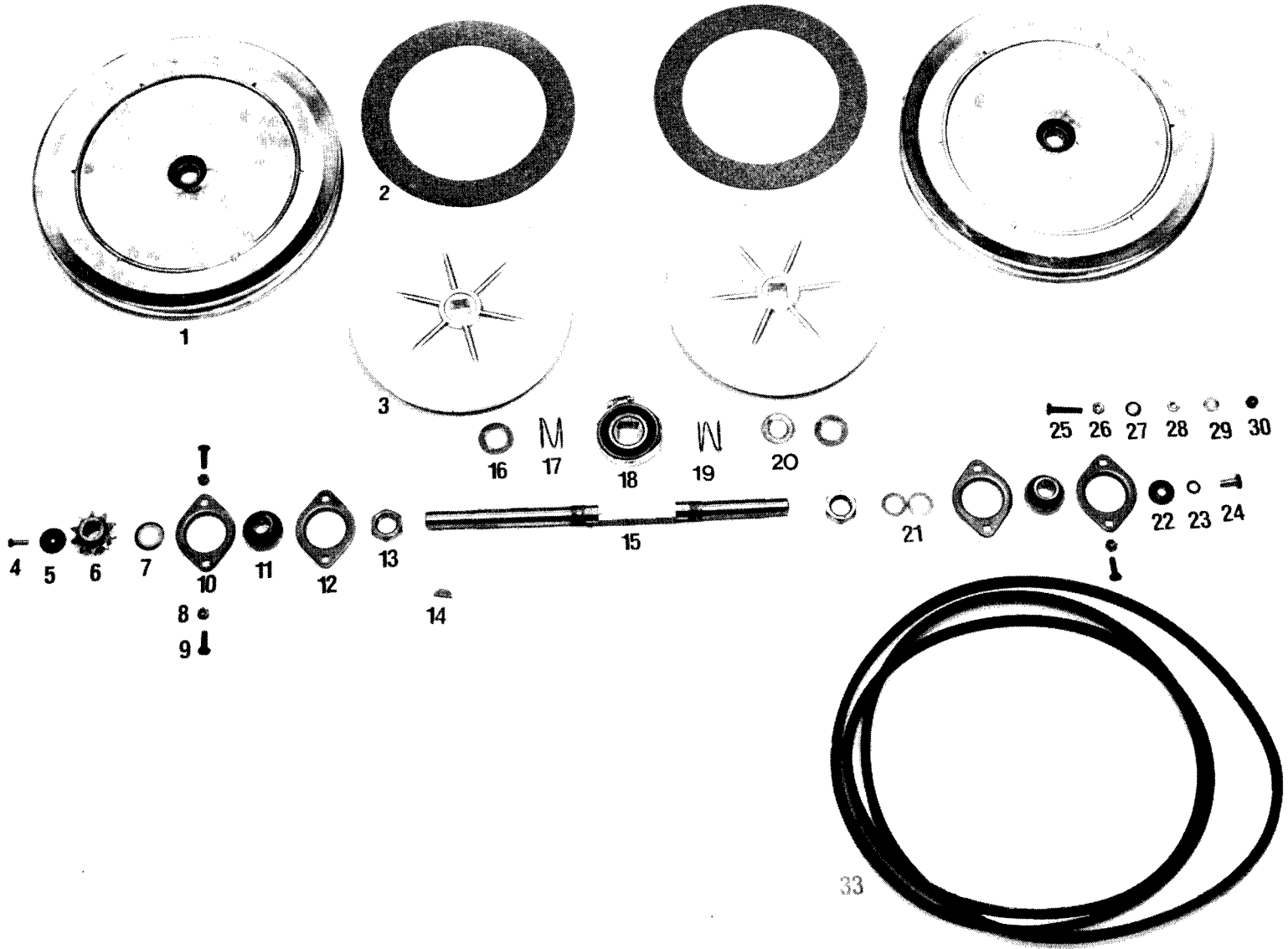
#### FRONT AXLE ASSEMBLY

INDEX	PART No.	DESCRIPTION
1	GT 455	Tyre
2	GT 456	Tube
3	GT 7007	Wheel Hub
4	GT 396	Bearing
5	GT 7009	Collar
6	GT 580	Retainer
7	GT 2014	Washer
8	GT 1766	Nylon Bush
9	GT 1327	King Pin Cover
10	Deleted	
11	GT 8930	L.H. King Pin
12	GT 2018	Washer
13	GT 1035	Washer
14	GT 622	Pivot Bush
15	GT 534	Seal
16	GT 585	Seal
17	GT 4	Nut
18	GT 1024	Screw
19	GT 36	Nut
20	GT 8890	Front Axle
** 21	GT 7375/7385	Tie Rod
22	GT 8940	R.H. King Pin

- \* Chain Adjustor to suit 10 tooth drive sprocket GT 7760 manufactured before MAY 1988
- \*\* Tie Rod single piece GT 8920 manufactured before March 1988



# ILLUSTRATION 5



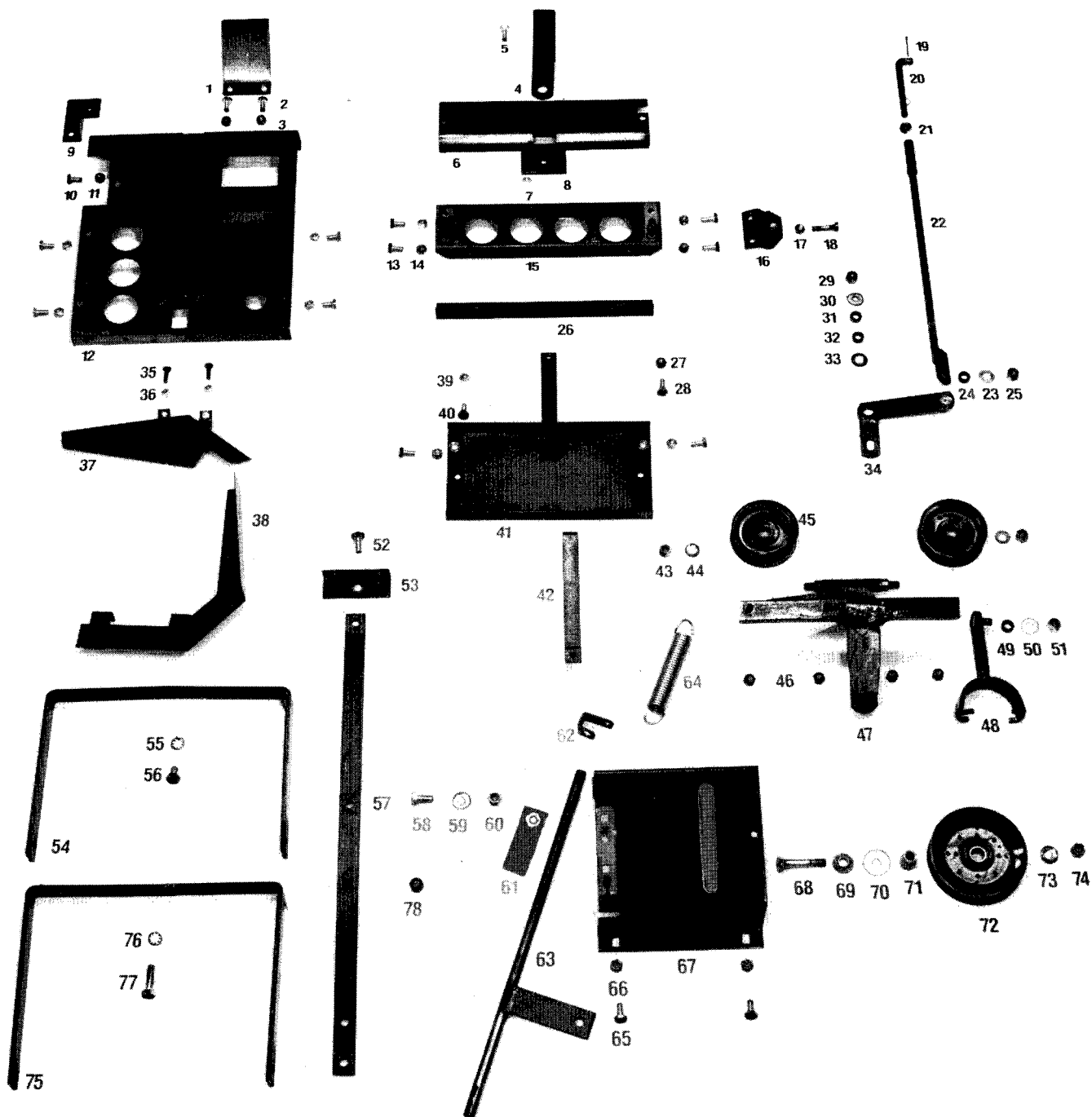
## Illustration 5

### REAR DRIVE

INDEX	PART No.	DESCRIPTION
1	GT 401	Pulley
2	GT 567	Lining
3	GT 404	Drive Plate
4	GT 1759	Screw
5	GT 7305	Washer
* 6	GT 7097	Sprocket 9 tooth
7	Deleted	
8	GT 97	Nut
9	GT 1052	Screw
10	GT 7017	Flangette Plates
11	GT 7010	Bearing
12	GT 7017	Flangette Plates
13	GT 347	Nut
14	GT 517	Key
15	GT 7016	Square Drive Shaft
16	GT 7303	Washer
17	GT 357	Spring
18	GT 927	Bearing
19	GT 357	Spring
20	GT 541	Shim
21	GT 7304	Washer
22	GT 7306	Washer
23	GT 1249	Washer
24	GT 1301	Set Screw
25	GT 2032	Screw
26	GT 17	Nut
27	GT 1022	Washer
28	GT 17	Nut
29	GT 1022	Washer
30	GT 97	Nut
33	GT 371	Belt-Drive
34	GT 7960	Clutch Unit
35	GT 920	401 Pulley & Bearing

\* Sprocket 10 tooth GT 7012  
Manufactured before June 1988

# ILLUSTRATION 6



## Illustration 6

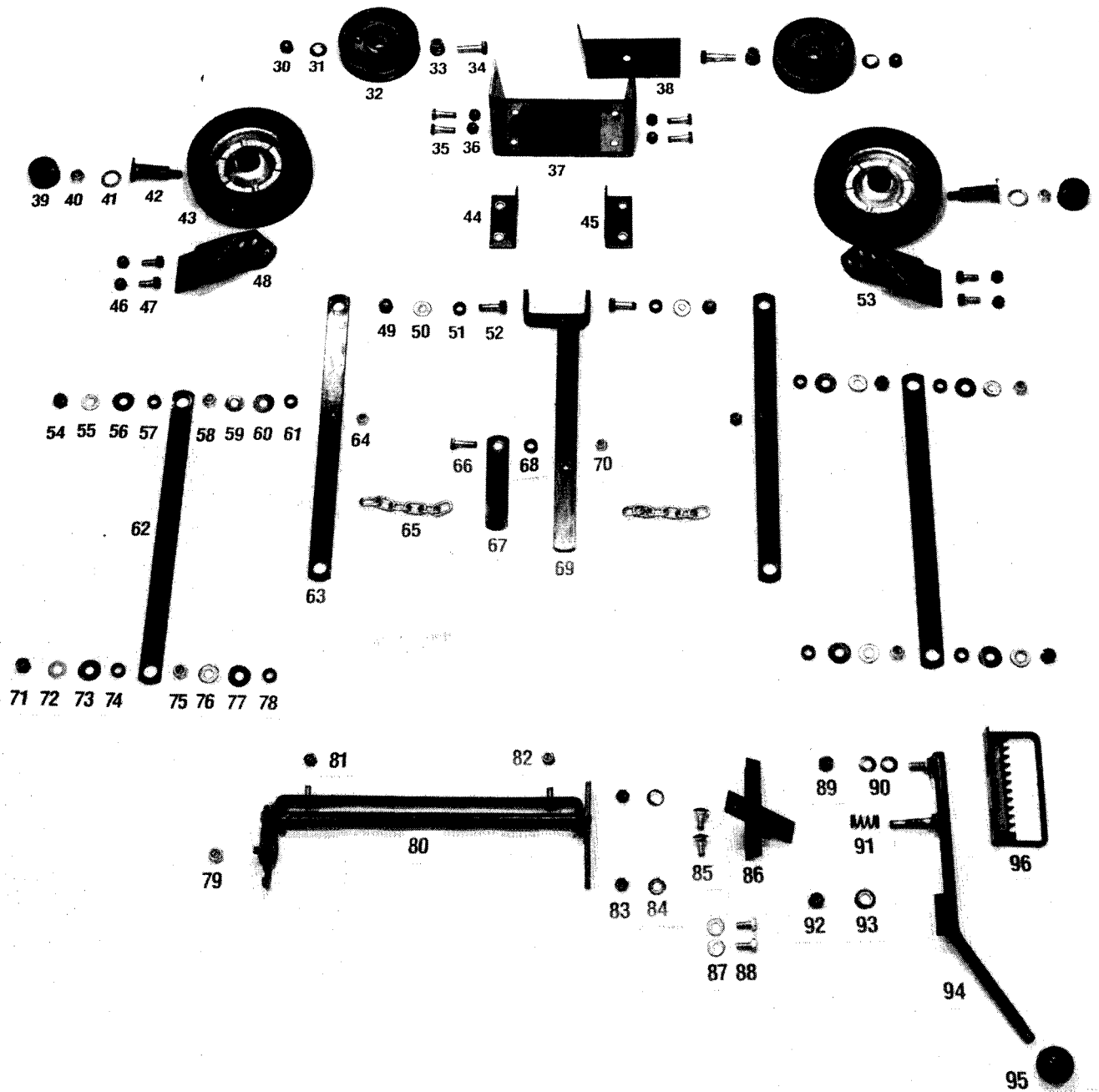
### IDLER PULLEYS

INDEX	PART No.	DESCRIPTION	INDEX	PART No.	DESCRIPTION
1	GT 7506	Switch Bracket	66	GT 1020	Nut
2	GT 1301	Screw	67	GT 7540	Notch Bar Mounting
3	GT 1020	Nut	68	GT 118	Bolt
4	GT 1718	Tow Bar	69	GT 608	Bush
5	GT 1455	Screw	70	GT 1025	Washer
6	GT 8791	Plate	71	GT 609	Bearing Adaptor
7	GT 1020	Nut	72	GT 7965	Pulley
8	GT 7414	Plate	73	GT 1012	Washer
9	GT 7504	Bracket	74	GT 4	Nut
10	GT 1301	Screw	75	GT 7602	Seat Support
11	GT 1020	Nut	76	GT 37	Washer
12	GT 7604	Steering Bracket	77	GT 1024	Screw
13	GT 1301	Screw	78	GT 4	Nut
14	GT 1020	Nut			
15	GT 7110	Plate			
16	GT 7997	Brake Bracket			
17	GT 73	Nut			
18	GT 1451	Screw			
19	GT 167	Split Pin			
20	GT 7310	Adjustment Link			
21	GT 73	Nut			
22	GT 7640	Clutch Link			
23	GT 1012	Washer			
24	GT 730	Pivot bush			
25	GT 4	Nut			
26	GT 7119	Brace			
27	GT 1020	Nut			
28	GT 1455	Screw			
29	GT 4	Nut			
30	GT 1012	Washer			
31	GT 730	Pivot bush			
32	GT 730	Pivot bush			
33	GT 1012	Spacer			
34	GT 7630	Transfer Link			
35	GT 1052	Screw			
36	GT 97	Nut			
37	GT 8490	Chain Guard.			
38	GT 8520	Chain Guard			
39	GT 1020	Nut			
40	GT 1301	Screw			
* 41	GT 7140	Battery Support			
42	GT 7607	Battery Hook			
43	GT 4	Nut			
44	GT 1012	Washer			
45	GT 1009	Pulley			
46	GT 1020	Nut			
** 47	GT 7530	Clutch Bracket			
48	GT 7580	Clutch Fork			
49	GT 730	Pivot bush			
50	GT 1012	Washer			
51	GT 4	Nut			
52	GT 1455	Screw			
53	GT 7605	Bracket			
54	GT 7603	Seat Support			
55	GT 37	Washer			
56	GT 104	Screw			
57	GT 7880	Cross Bar			
58	GT 104	Screw			
59	GT 1012	Washer			
60	GT 4	Nut			
61	GT 640	Spring Leaf			
62	GT 7308	Spring Bracket			
63	GT 7550	Notch Bar			
64	GT 1554	Spring			
65	GT 1455	Screw			

\* For machines manufactured after January 1988 having battery with white case  
Battery support GT 7141  
Battery clamps GT 7611

\*\* Clutch bracket GT 7545  
Idler pulley support GT 7555  
manufactured after Feb. 1988

# ILLUSTRATION 7

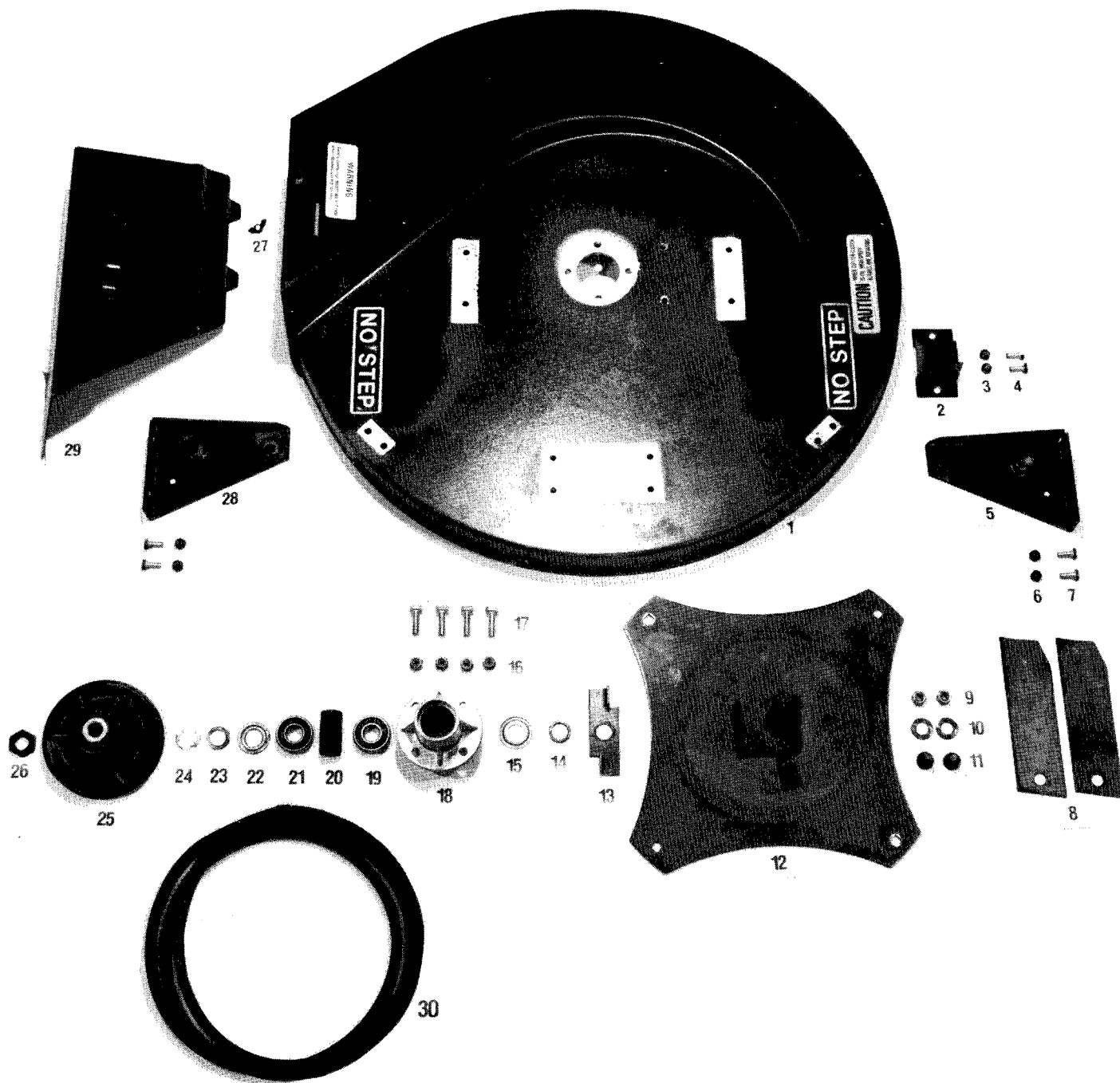


## Illustration 7

### HEIGHT ADJUSTMENT

INDEX	PART No.	DESCRIPTION
30	GT 4	Nut
31	GT 1012	Washer
32	GT 1854	Pulley
33	GT 610	Adaptor
34	GT 118	Bolt
35	GT 1451	Screw
36	GT 1020	Nut
37	GT 8206	Pulley Mounting
38	GT 8330	Guard
39	GT 1930	Wheel Cap
40	GT 4	Nut
41	GT 1012	Washer
42	GT 1768	Shaft
43	GT 1638	Wheel Assembly
44	GT 8207	Bracket
45	GT 8207	Bracket
46	GT 1020	Nut
47	GT 1455	Screw
48	GT 8210	Bracket L.H.
49	GT 4	Nut
50	GT 579	Washer
51	GT 730	<b>Pivot bush</b>
52	GT 1169	Screw
53	GT 8211	Bracket R.H.
54	GT 4	Nut
55	GT 1012	Washer
56	GT 579	Washer
57	GT 730	<b>Pivot bush</b>
58	GT 4	Nut
59	GT 1012	Washer
60	GT 579	Washer
61	GT 730	<b>Pivot bush</b>
62	GT 7406	Link
63	GT 7780	Top Link L.H.
64	GT 1020	Nut
65	GT 7085	Chain
66	GT 1451	Screw
67	GT 7081	Spring Leaf
68	GT 730	<b>Spacer</b>
69	GT 8350	Stabiliser
70	GT 1020	Nut
71	GT 1	Nut
72	GT 1012	Washer
73	GT 579	Washer
74	GT 730	<b>Pivot bush</b>
75	GT 4	Nut
76	GT 1012	Washer
77	GT 579	Washer
78	GT 730	<b>Pivot bush</b>
79	GT 4	Nut
80	GT 7840	Height Adj. assembly
81	GT 4	Nut
82	GT 4	Nut
83	GT 1020	Nut
84	GT 1035	Washer
85	GT 1021	Bolt
86	GT 8780	Mounting Bracket
87	GT 1035	Washer
88	GT 1301	Screw
89	GT 4	Nut
90	GT 1012	Washer
91	GT 7071	Spring
92	GT 4	Nut
93	GT 1012	Washer
94	GT 7850	Height Adj. Lever
95	GT 1565	Knob
96	GT 8190	Height Adj. Rack
97	GT 7790	Top Link R.H.

# ILLUSTRATION 8





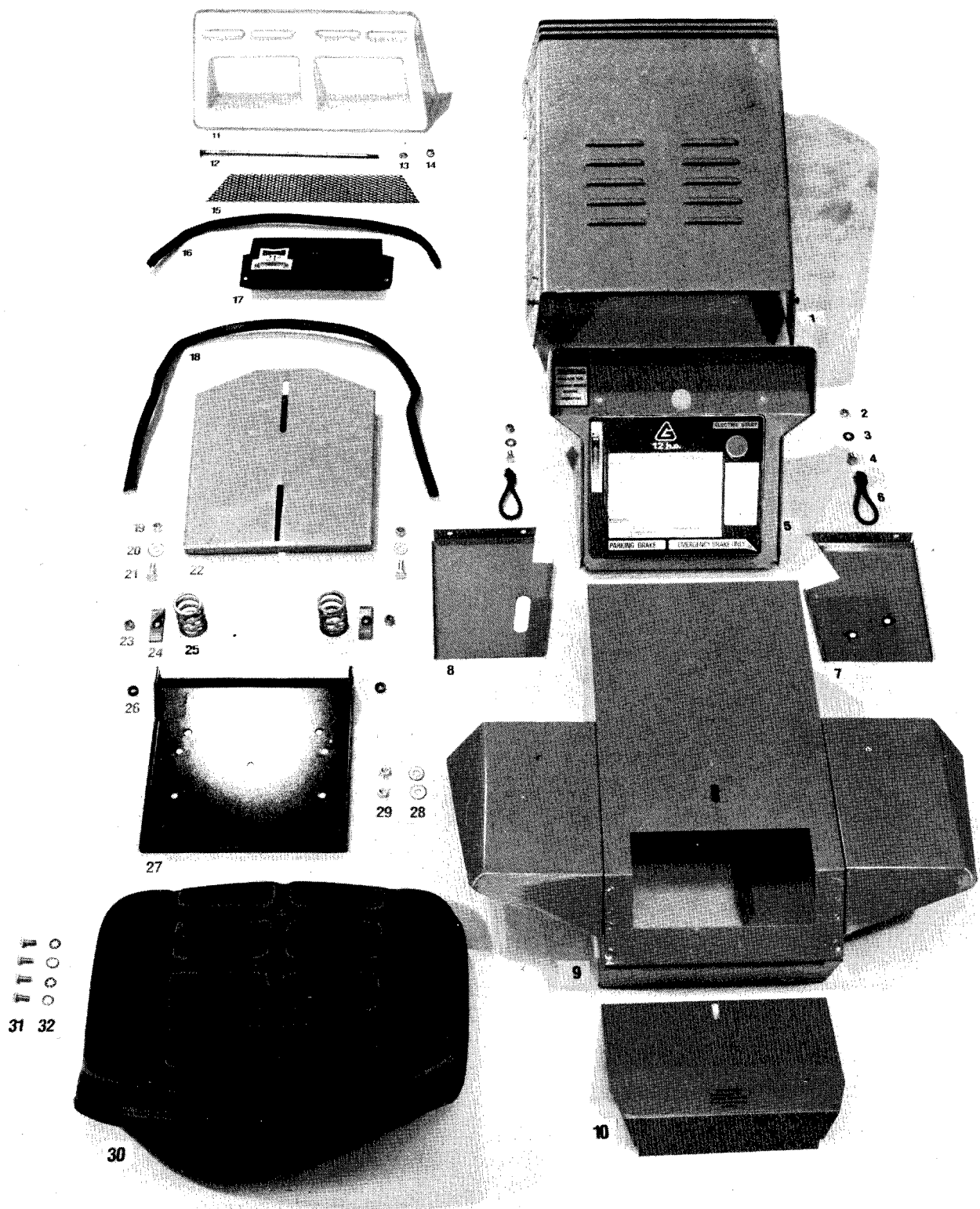
## Illustration 8

### CUTTING HOUSING & BLADES

INDEX	PART No.	DESCRIPTION
1	GT 7090	Cutter Deck
2	GT 8260	Belt Guide
3	GT 1020	Nut
4	GT 1455	Screw
5	GT 8250	Slide Bracket R.H.
6	GT 1020	Nut
7	GT 1455	Screw
* 8	GT 2104	Blade L.H.
9	GT 1484	Nut
10	GT 1490	Washer
11	GT 2100	Bolt
12	GT 8370	Disc & Spindle
13	GT 8205	Bearing Wiper
14	GT 635	Spacer
15	GT 589	Bearing Shield
16	GT 4	Nut
17	GT 171	Bolt
** 18	GT 8051	Spindle Housing (cast iron)
19	GT 395	Bearing
*** 20	GT 8053	Spacer
21	GT 395	Bearing
22	GT 589	Bearing Shield
23	GT 635	Spacer
24	GT 635	Spacer
25	GT 7100	Pulley
26	GT 2003	Nut
27	GT 2006	Wing Nut
28	GT 8240	Side Bracket L.H.
29	GT 8125	Stone Guard
30	GT 2200	Belt-Cutters

- \* Blades for rear grass catcher GT 2105
- \*\* Spindle Housing (aluminium) GT 400  
manufactured before March 1988
- \*\*\* Spacer for aluminium housing GT 7079  
manufactured before March 1988.

# ILLUSTRATION 9



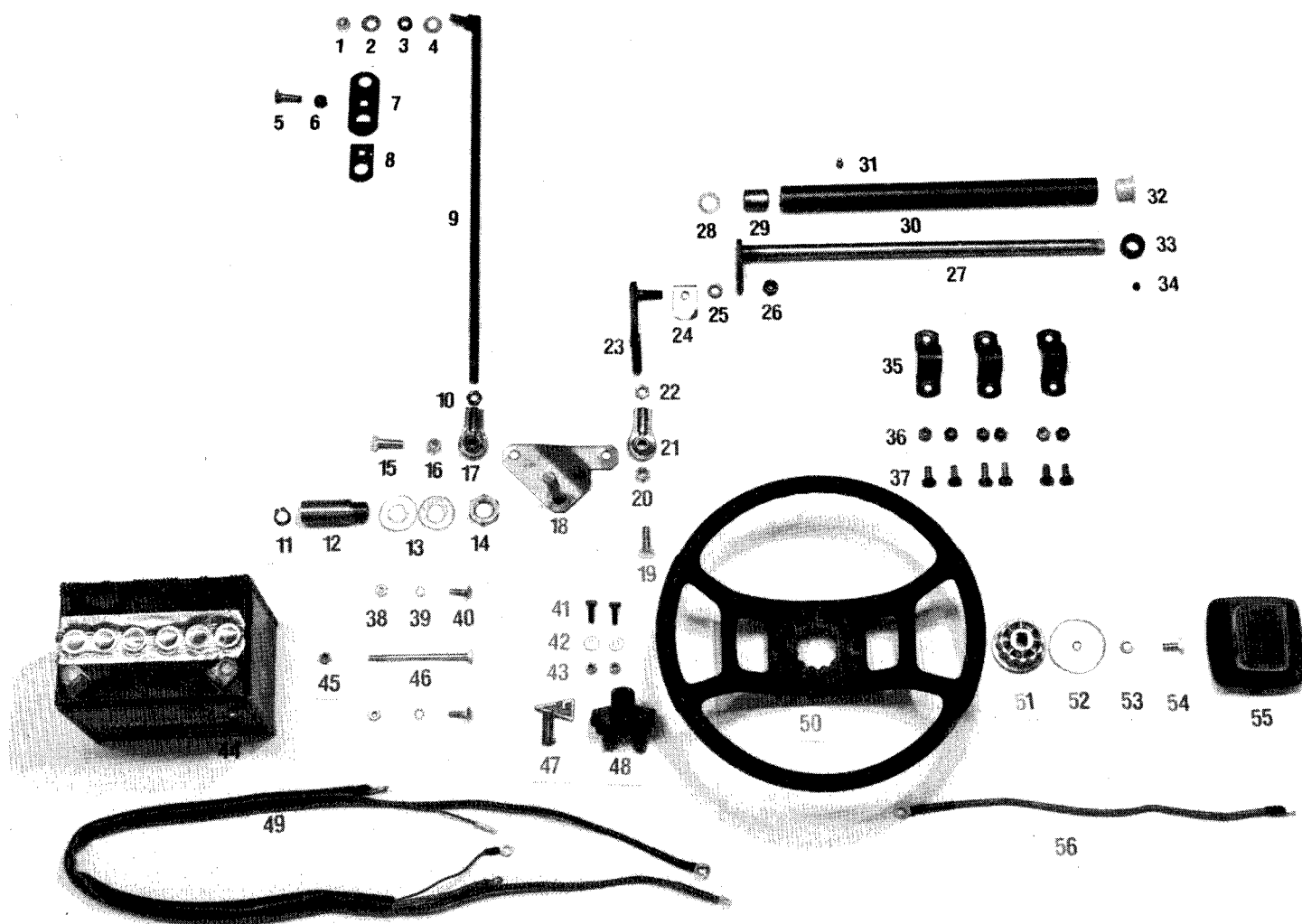
## Illustration 9

### COVERS & SEAT

INDEX	PART No.	DESCRIPTION
1	GT 8460	Bonnet
2	GT 1146	Nut
3	GT 1022	Washer
4	GT 262	Screw
5	GT 8420	Steering Cowl
6	GT 7015	Strap
7	GT 7511	Side Cover R.H.
8	GT 7510	Side Cover L.H.
9	GT 7150	Rear Cover
10	GT 7120	Battery Cover
11	GT 1223	Nose Cone
12	GT 8470	Pivot Shaft
13	GT 1050	Washer
14	GT 1020	Nyloc Nut
15	GT 8409	Grille
16	GT 8404	Pinchweld
17	GT 8405	Dash Board
18	GT 8404	Pinchweld
19	GT 4	Nut
20	GT 1012	Washer
21	GT 1169	Screw
22	GT 8620	Seat Support
23	GT 4	Nut
24	GT 8412	Bracket
25	GT 8030	Seat Spring
26	GT 730	Pivot Bush
27	GT 8630	Seat Base
28	GT 1012	Washer
29	GT 4	Nut
30	GT 1527	Seat
31	GT 1301	Screw
32	GT 85	Washer

N.B. Bonnet Unit Compl. GT 7983

# ILLUSTRATION 10



**Illustration 10**  
**STEERING & ELECTRICAL**

INDEX	PART No.	DESCRIPTION
1	GT 4	Nyloc Nut
2	GT 1012	Washer
3	GT 730	Pivot bush
4	GT 1012	Washer
5	GT 157	Bolt
6	GT 1020	Nut
7	GT 7219	Steering Arm
8	GT 7208	Locking Plate
* 9	GT 8135	Drag Link
10	GT 36	Nut
11	GT 159	Circlip
12	GT 7054	Bush
13	GT 127	Washer
14	GT 347	Nut
15	GT 1169	Set Screw
16	GT 4	Nut
17	GT 1626	Tie Rod End
18	GT 7920	Pivot Plate
19	GT 1169	Screw
20	GT 4	Nut
21	GT 1626	Tie Rod End
22	GT 36	Nut
23	GT 8820	Steering Link
24	GT 7512	Steering Stop
25	GT 730	Bush
26	GT 4	Nut
27	GT 7870	Steering Shaft
28	GT 1488	Spacer
29	GT 7052	Bush
30	GT 7025	Steering Tube
31	GT 1924	Grease Nipple
32	GT 1179	Nylon Bush
33	GT 628	Collar
34	GT 1148	Grub Screw
35	GT 7502	Saddle Clamp
36	GT 1020	Nut
37	GT 1301	Set Screw
38	GT 73	Nut
39	GT 85	Washer
40	GT 1021	Bolt
41	GT 1052	Screw
42	GT 1022	Washer
43	GT 97	Nut
** 44	GT 7099	Battery (white case)
45	GT 97	Nut
46	GT 2017	Bolt
47	GT 1995	Key/Button
48	GT 1915	Switch
49	GT 8964	Wiring Harness
50	GT 1785	Steering Wheel Comp.
51	}	All in kit GT 1785 see No. 50
52		
53		
54		
55		
56	GT 7072	Pos Lead

\* Drag Link with 1 Tie Rod End  
GT 8140

\*\* Battery (black case) illustrated  
manufactured before Feb. 1988